



Flat Shank Clamp Assembly AA-9005



Go to www.tilmor.com/resources for complete parts list, additional resources and replacement part ordering.

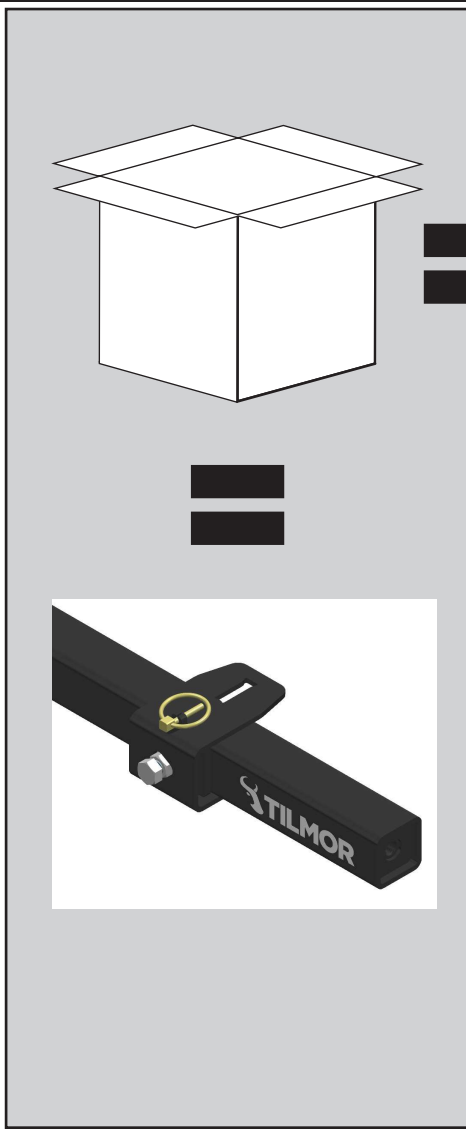
Release Date: 11/28/2018
Document Number: 12-70004
Revision Number: 00

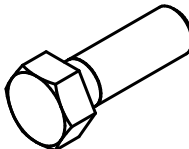
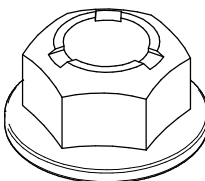
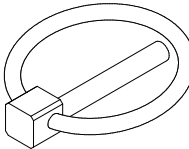
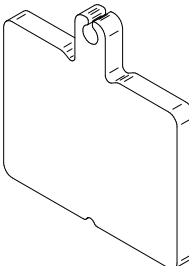
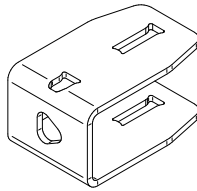
ATTENTION
Review safety information before operation.

Tools	
3/4" wrench	

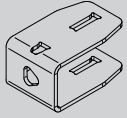
Installation Time (estimated) 10 minutes

REQUIRED PARTS

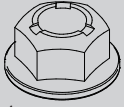


- 
1x
91-0808
1/2" Hex Bolt
- 
1x
99-SF08NF
1/2" Flange Nut
- 
1x
03-0021
3/16" Lynch Pin
- 
1x
AA-1022
Push Plate
- 
1x
AA-3002
Vertical Mount

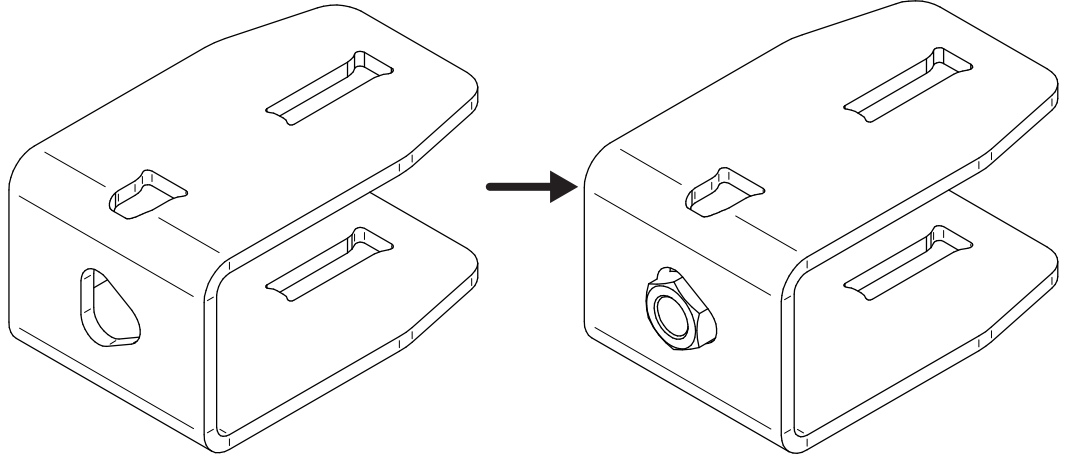
ASSEMBLY



1x
AA-3002
Vertical
Mount



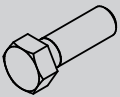
1x
99-SF08NF
1/2" Flange
Nut



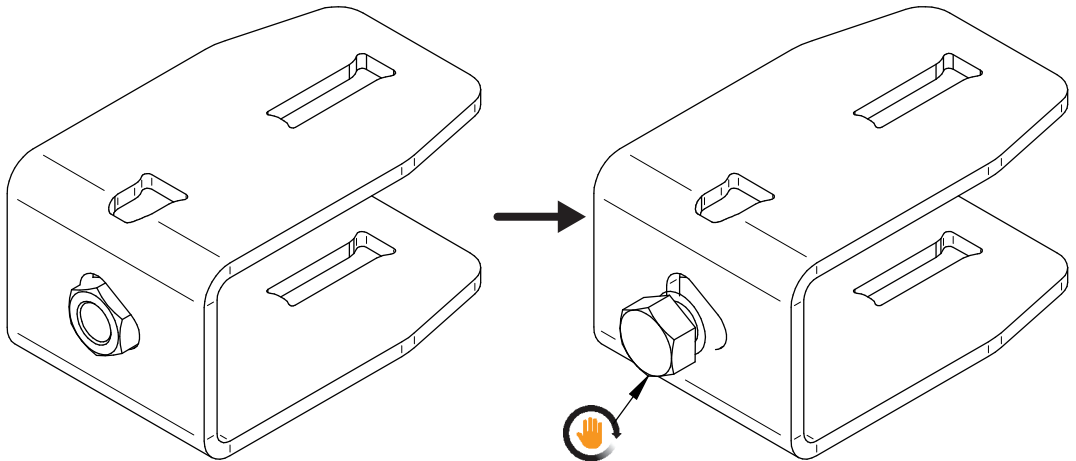
1



3/4" Wrench

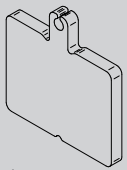


1x
91-0808
1/2" Hex
Bolt

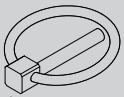


The 1/2" hex bolt should be installed hand tight. When a shank is installed through the bracket the 1/2" flange bolt should be torqued to 90 ft-lbs (122 Nm) against the push plate to hold the shank in place.

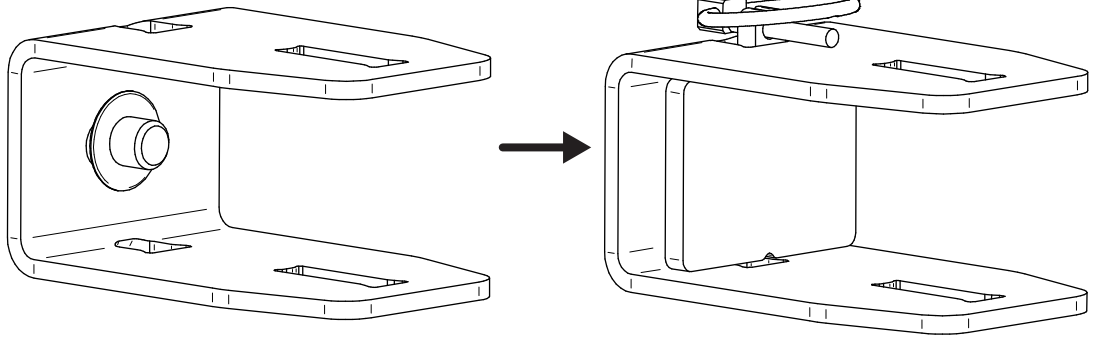
2



1x
AA-1022
Push Plate



1x
03-0021
3/16" Lynch
Pin



3