



Release Date: 12/31/2019

Revision Number: 01

Revision Date: 01/12/2021

Spindle and Hub Assembly Replacement

Document Number	Model	Serial Number Range	Part Number
12-80022	520Y / 520M	All Units	AT-3108

⚠ WARNING

Before making repairs or adjustments set the parking brake, turn off the engine, and remove the ignition key.

Always disconnect the negative battery cable from the battery when working with electrical components. Always work in a manner that does not put safety at risk!

⚠ WARNING

Safety glasses must be worn during installation. Ear (hearing) protection must be worn when using air or power tools.

Installation Notes: Right and left hand orientation referred to in these instructions is determined as if facing forward from the operator station.

Installation Time (estimated) 1 hour

Tools Required: 5/8" socket, 5/8" wrench, 3/4" socket, Ratchet, Torque Wrench



Attention

Tilmor recommends that service be performed by a qualified technician. If you are unsure how to perform the service procedure(s), contact Tilmor at 1-844-255-5864 or visit www.tilmor.com for additional information.

1. Park the tractor on a level surface.
2. Engage the parking brake and shut off the engine.
3. Remove the key from the ignition switch.

⚠ WARNING

Ensure that the tractor is securely supported when the wheels are lifted off of the ground. Failure to secure the tractor properly can result in personal injury or death.

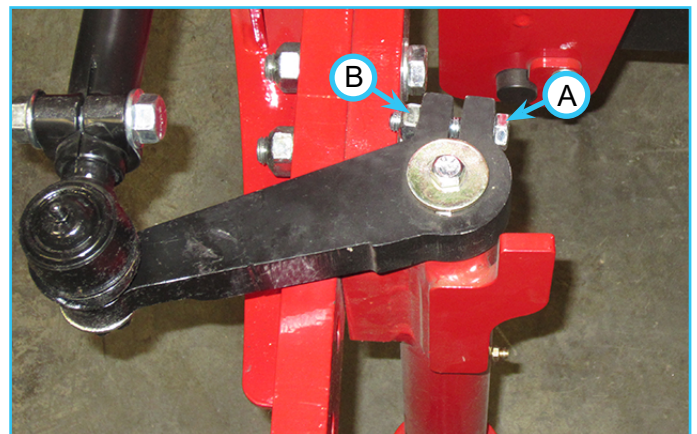


Attention

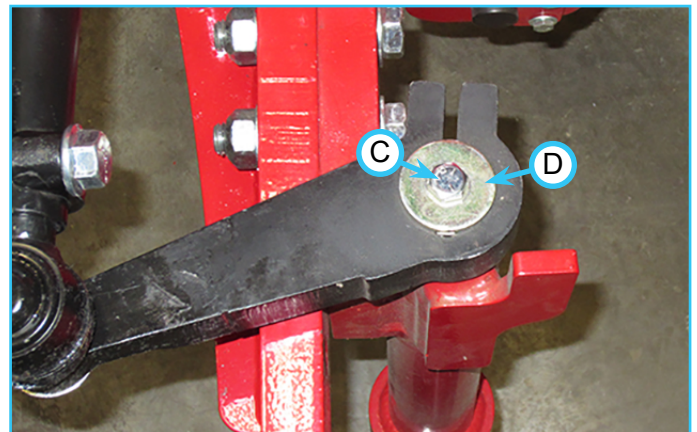
Ensure that the tractor is lifted high enough that the spindle assembly can be removed from the bottom of the front axle pivot tube.

4. Using a high lift jack, hoist, or other safe method lift the front of the tractor off of the ground.
5. Remove the wheel from the hub in accordance with the front wheel replacement procedure.

6. Remove the 7/16" bolt (A) and locknut (B) from the front steering arm.

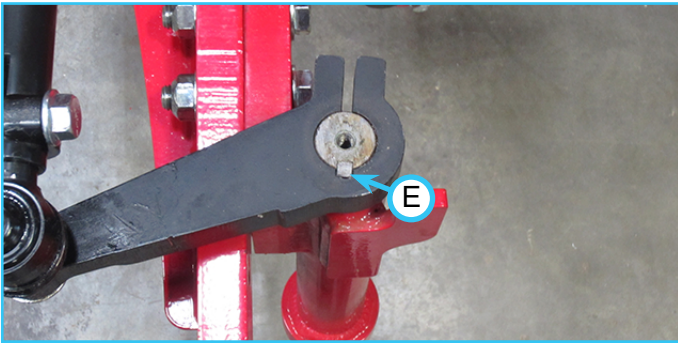


7. Remove the 3/8" bolt (C) and washer (D).



8. The spindle assembly can now be removed from the bottom of the axle pivot tube.

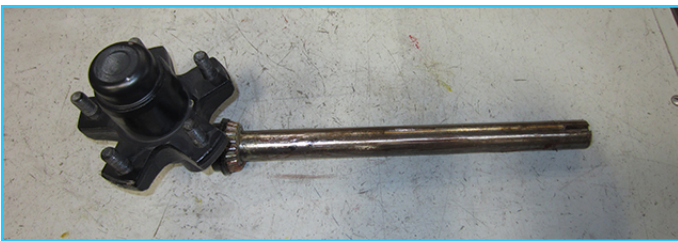
9. Ensure that the key (E) is retained for later use.



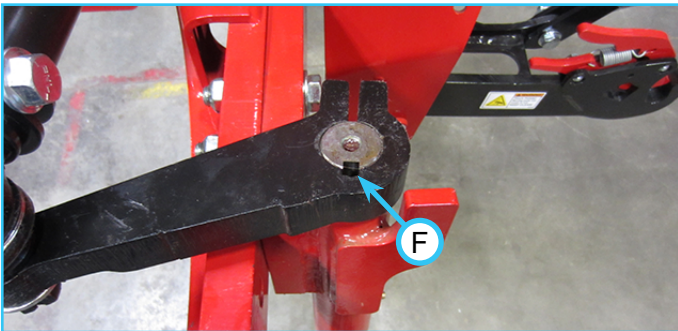
10. To prepare the new spindle assembly for installation the bearing must be packed with grease.

11. Apply a coating of grease to the spindle.

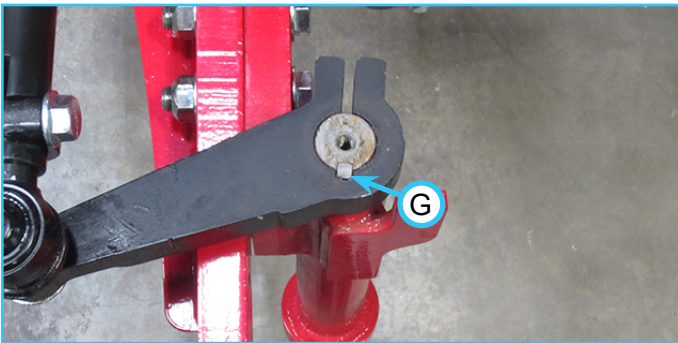
12. Install the bearing onto the spindle as shown below.



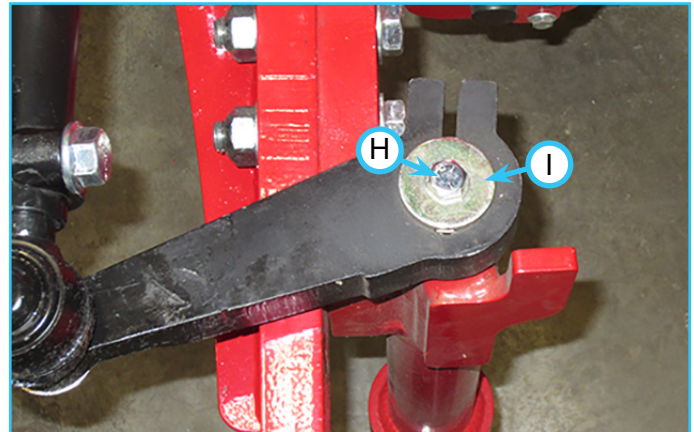
13. Install the new spindle assembly into the bottom of the axle pivot tube, aligning the keyway (F).



14. Install the key (G) in the keyway. Ensure that the key is flush with the top of the spindle assembly and steering spindle.

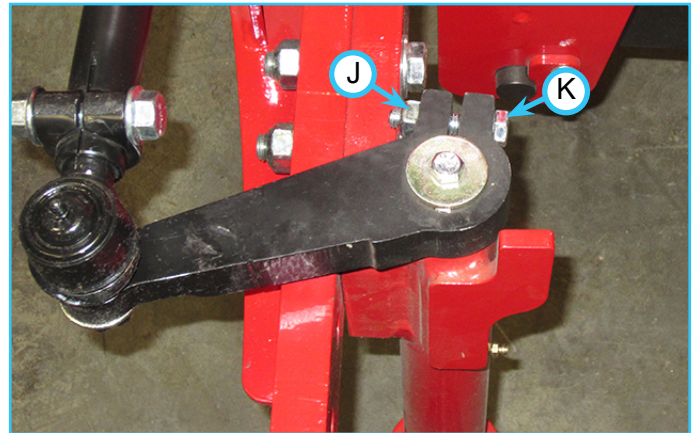


15. Install the 3/8" bolt (H) and washer (I) into the spindle assembly.



16. Torque the 3/8" bolt to 31 ft-lbs (42 Nm).

17. Install the 7/16" bolt (J) and locknut (K) from the front steering arm.



18. Torque the 7/16" bolt to 50 ft-lbs (68 Nm).

19. Install the front wheel in accordance with the front wheel replacement procedure.

Replacement Complete