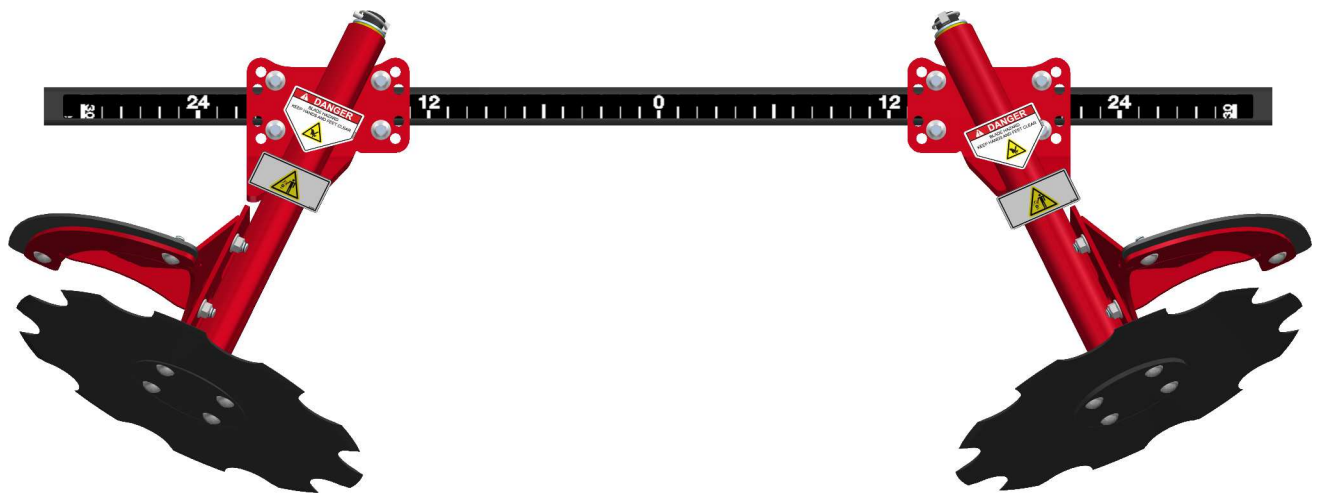


TILMOR

PARTS MANUAL

PLASTIC LIFTER



 **TILMOR**

Manufactured by
Tilmor LLC.
Made in the USA
Dalton, Ohio 44618

12-20001 Rev.01



295 Kurzen Rd. N
Dalton, OH 44618
www.tilmor.com

Notes

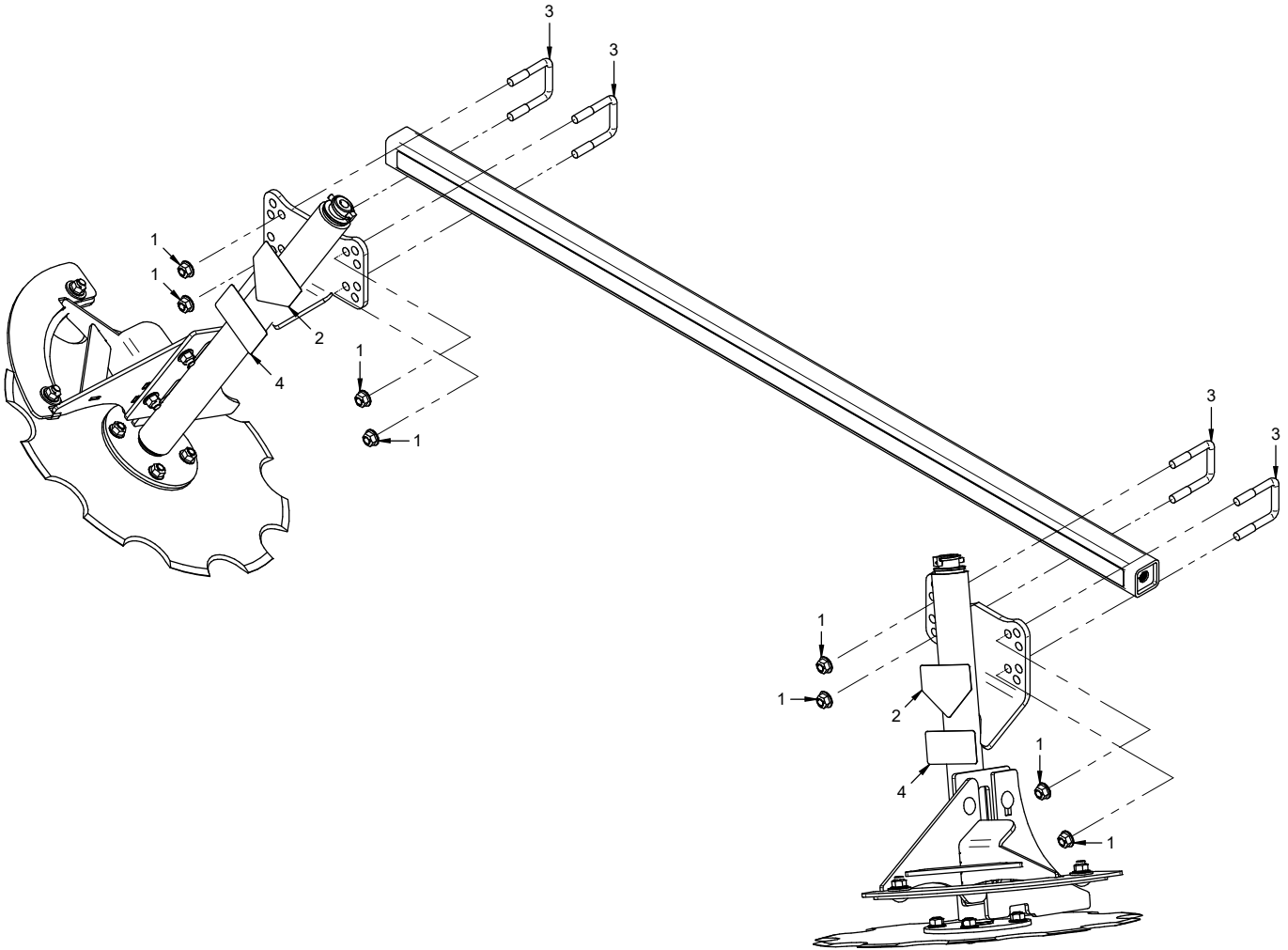
- If any component requires replacement, use only original Tilmor replacement parts.
- When ordering new components, be sure to order all required safety decals. All current safety decals must be affixed to the replacement components prior to installation of the component.

TABLE OF CONTENTS

Mounting Hardware.....	4
Left Plastic Lifter.....	6
Left Guard Assembly.....	8
Left Debris Removal Plate	10
Right Plastic Lifter	12
Right Guard Assembly	14
Right Debris Removal Plate	16

PARTS

ILLUSTRATED DRAWING Mounting Hardware



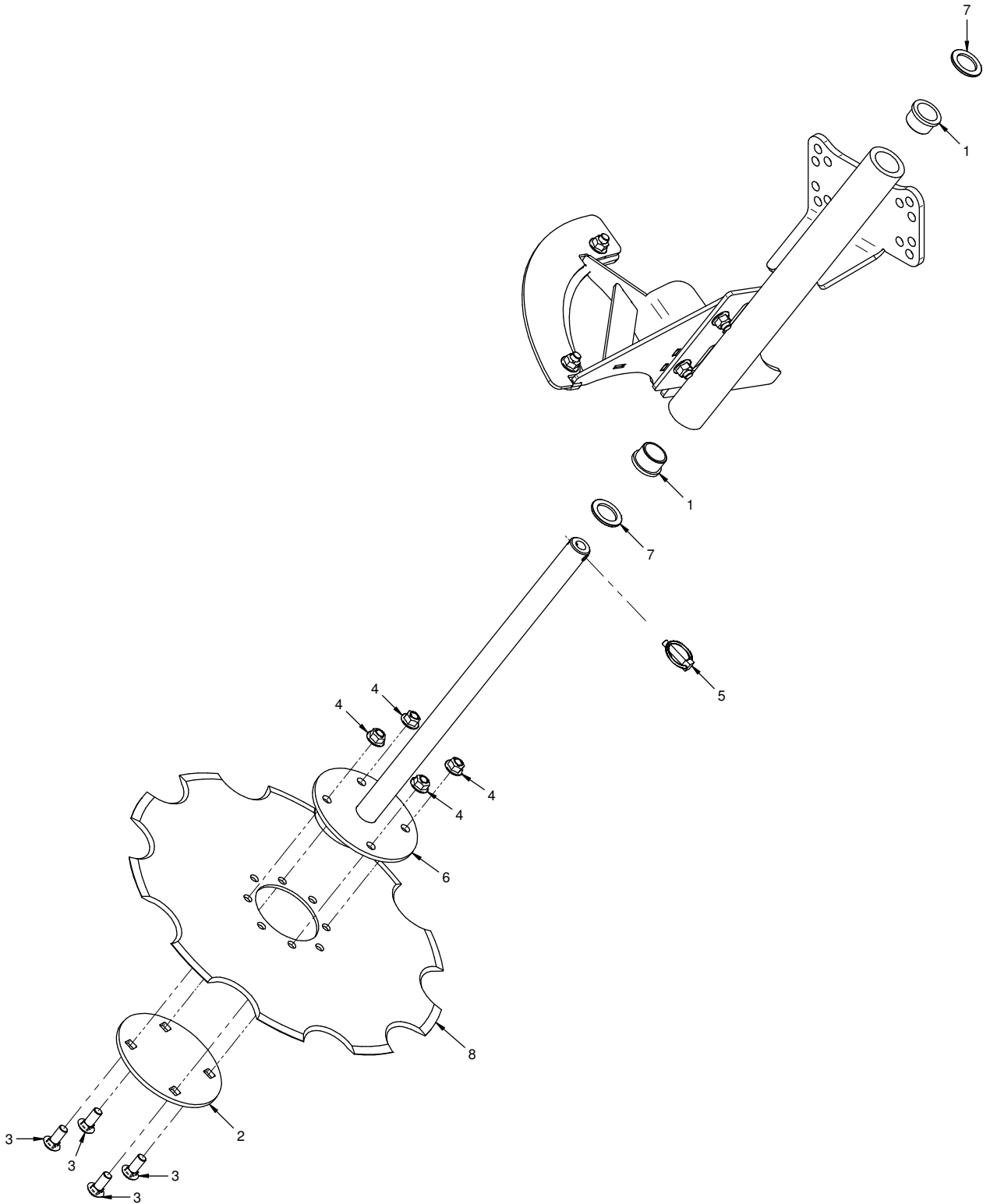
PARTS

Mounting Hardware

REF.	PART NO.	DESCRIPTION	QTY.
1	99-E0103	Nut, Locking Flange 1/2-13	8
2	00-0123	Decal, Keep Hands & Feet Clear	2
3	11-0085	U-Bolt, 1/2-13 x 2-1/16" ID x 3" SQ	4
4	00-0369	Decal, Do Not Remove Shields	2

PARTS

ILLUSTRATED DRAWING Left Plastic Lifter



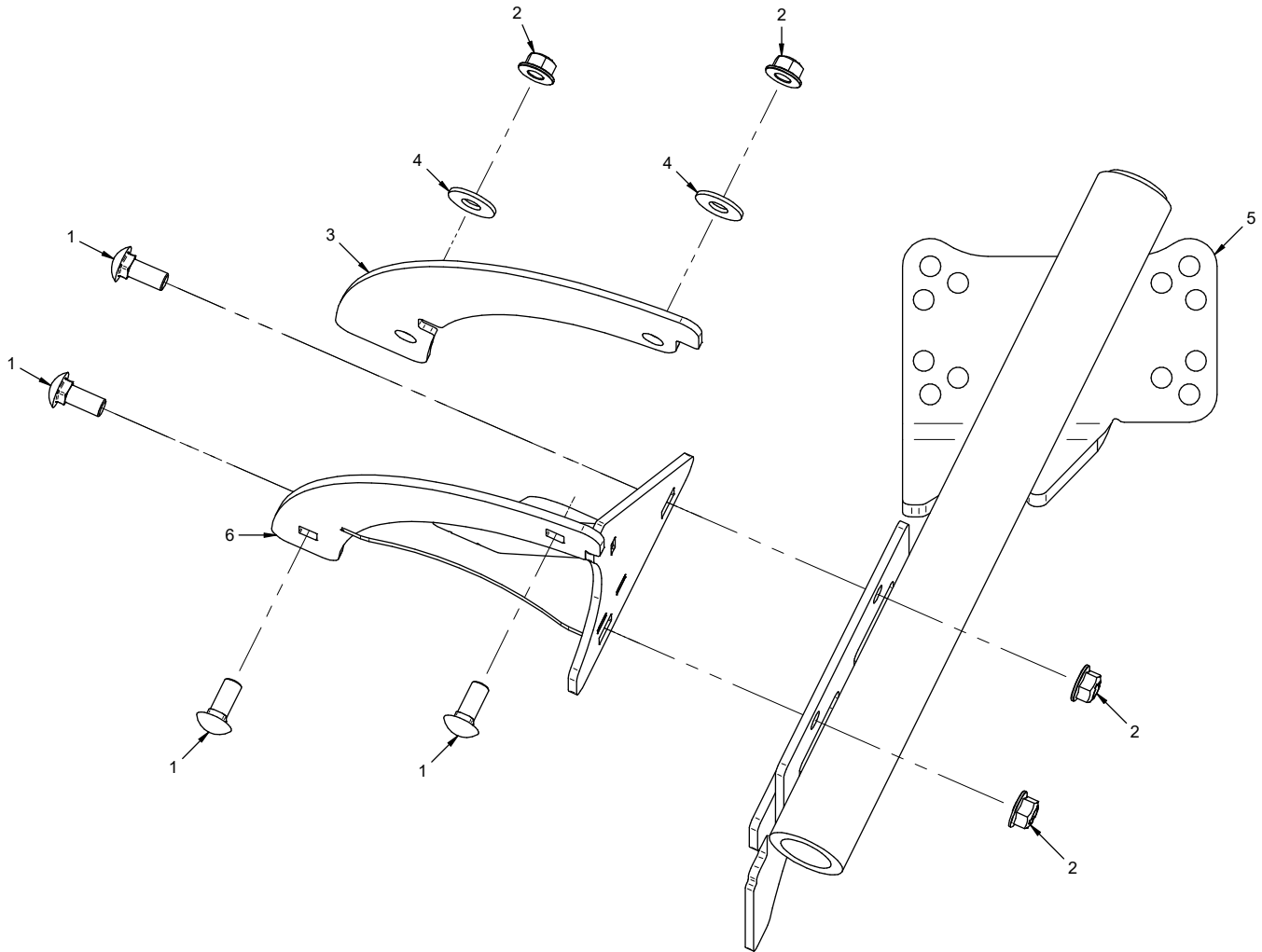
PARTS

Left Plastic Lifter

REF.	PART NO.	DESCRIPTION	QTY.
Ref.	Part #	Description	Qty.
1	85-B0060	Bushing, 1-1/4 ID x 1-1/2 OD 1	2
2	AA-1064	Plate, End Cap	1
3	97-0810-5	Bolt, Carriage 1/2-13 X 1-1/4 GR5	4
4	99-E0103	Nut, Locking Flange 1/2-13	4
5	03-0033	Pin, Linch 5/16"	1
6	AA-6025	Shaft, Plastic Lifter	1
7	99-B0024-2	Washer, Mach 1-1/4 x 1-7/8 10 GA	2
8	AA-3013	Disc, Plastic Cutter	1

PARTS

ILLUSTRATED DRAWING Left Guard Assembly



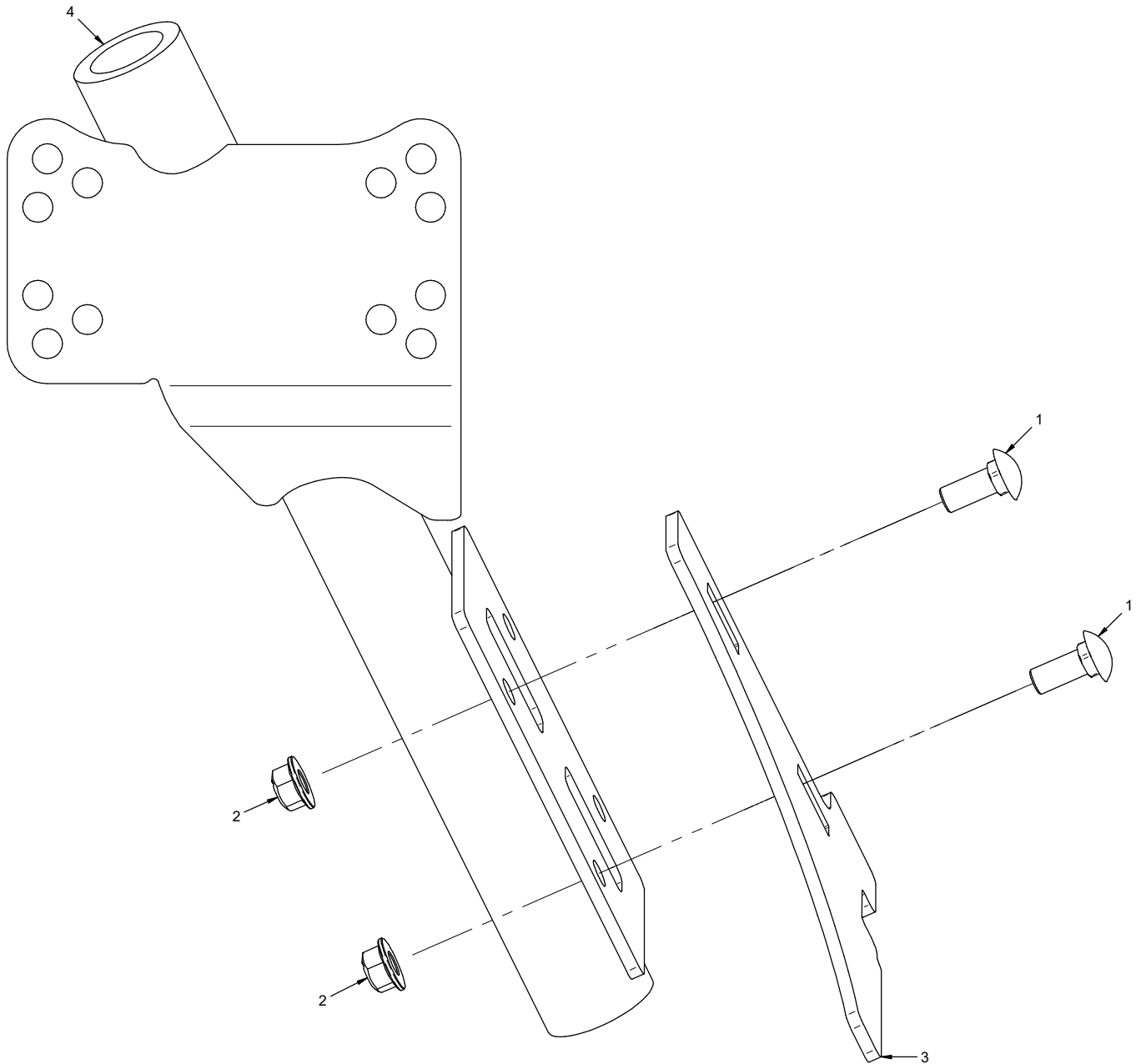
PARTS

Left Guard Assembly

REF.	PART NO.	DESCRIPTION	QTY.
1	97-0810-5	.Bolt, Carriage 1/2-13 X 1-1/4 GR5	4
2	99-E0103	.Nut, Locking Flange 1/2-13	4
3	AA-3015	.Belting, Disc Guard.	1
4	94-08	.Washer, Flat 1/2 USS	2
5	AA-6026	.Bracket, Plastic Lifter Mount LH	1
6	AA-6031	.Bracket, Disc Guard LH	1

PARTS

ILLUSTRATED DRAWING Left Debris Removal Plate



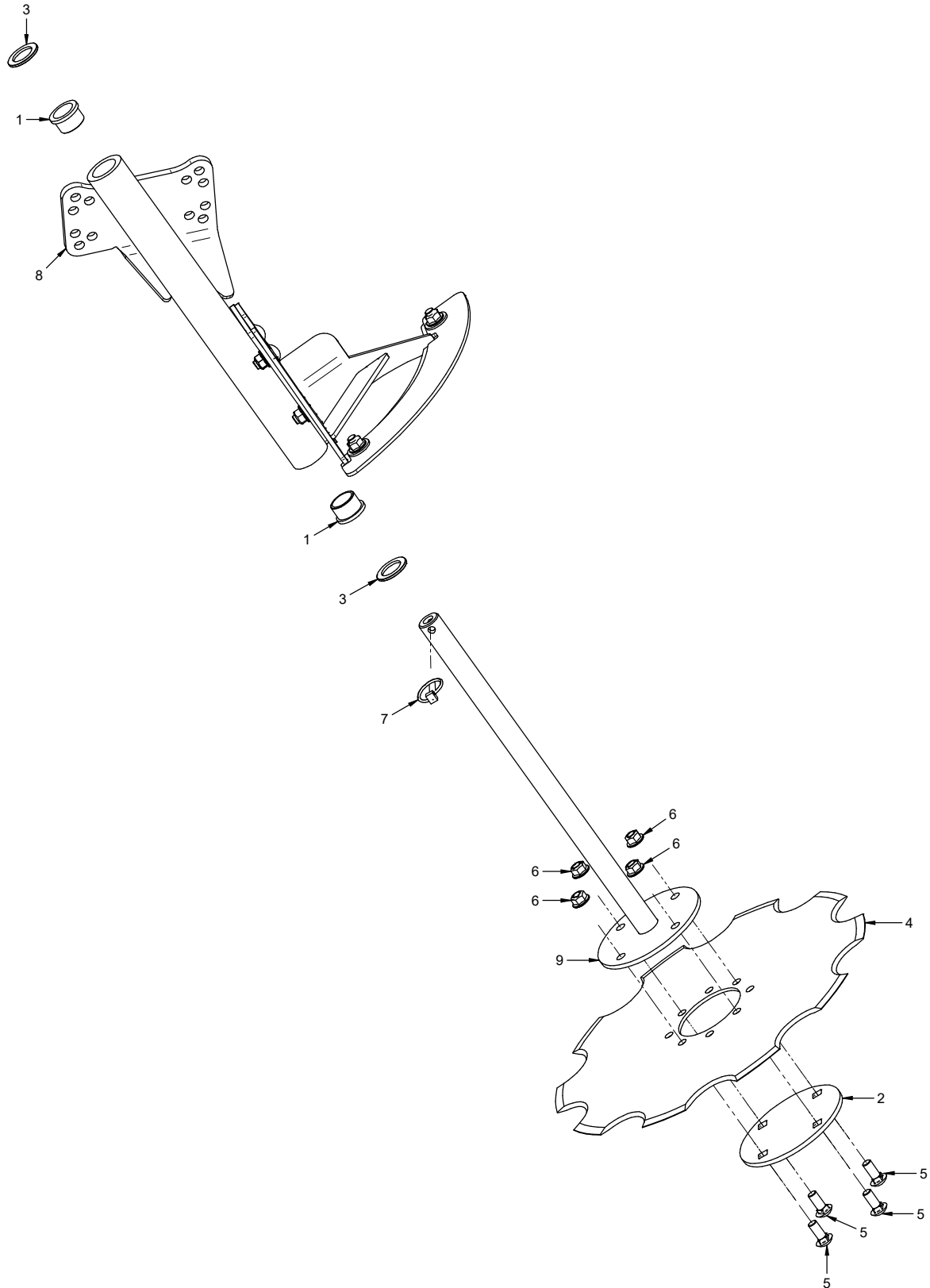
PARTS

Left Debris Removal Plate

REF.	PART NO.	DESCRIPTION	QTY.
1	97-0810-5	.Bolt, Carriage 1/2-13 X 1-1/4 GR5	2
2	99-E0103	.Nut, Locking Flange 1/2-13	2
3	AA-1074	.Plate, Debris Removal Arm	1
4	AA-6026	.Bracket, Plastic Lifter Mount LH	1

PARTS

ILLUSTRATED DRAWING Right Plastic Lifter



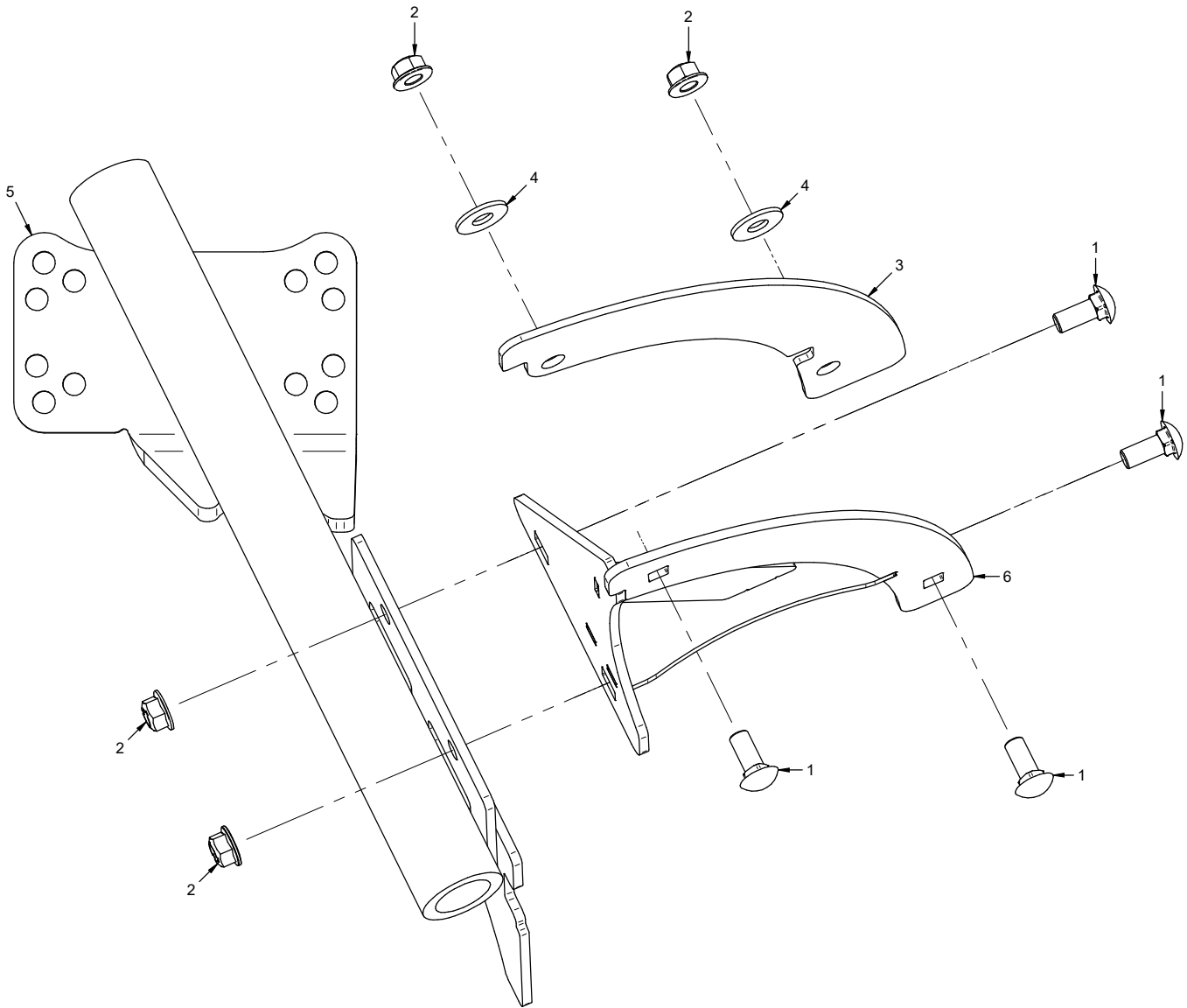
PARTS

Right Plastic Lifter

REF.	PART NO.	DESCRIPTION	QTY.
1	85-B0060	.Bushing, 1-1/4 ID x 1-1/2 OD 1	2
2	AA-1064	.Plate, End Cap	1
3	99-B0024-2	.Washer, Mach 1-1/4 x 1-7/8 10 GA	2
4	AA-3013	.Disc, Plastic Cutter	1
5	97-0810-5	.Bolt, Carriage 1/2-13 X 1-1/4 GR5	4
6	99-E0103	.Nut, Locking Flange 1/2-13	4
7	03-0033	.Pin, Linch 5/16"	1
8	AA-6022	.Bracket, Plastic Lifter Mount RH.	1
9	AA-6025	.Shaft, Plastic Lifter	1

PARTS

ILLUSTRATED DRAWING Right Guard Assembly



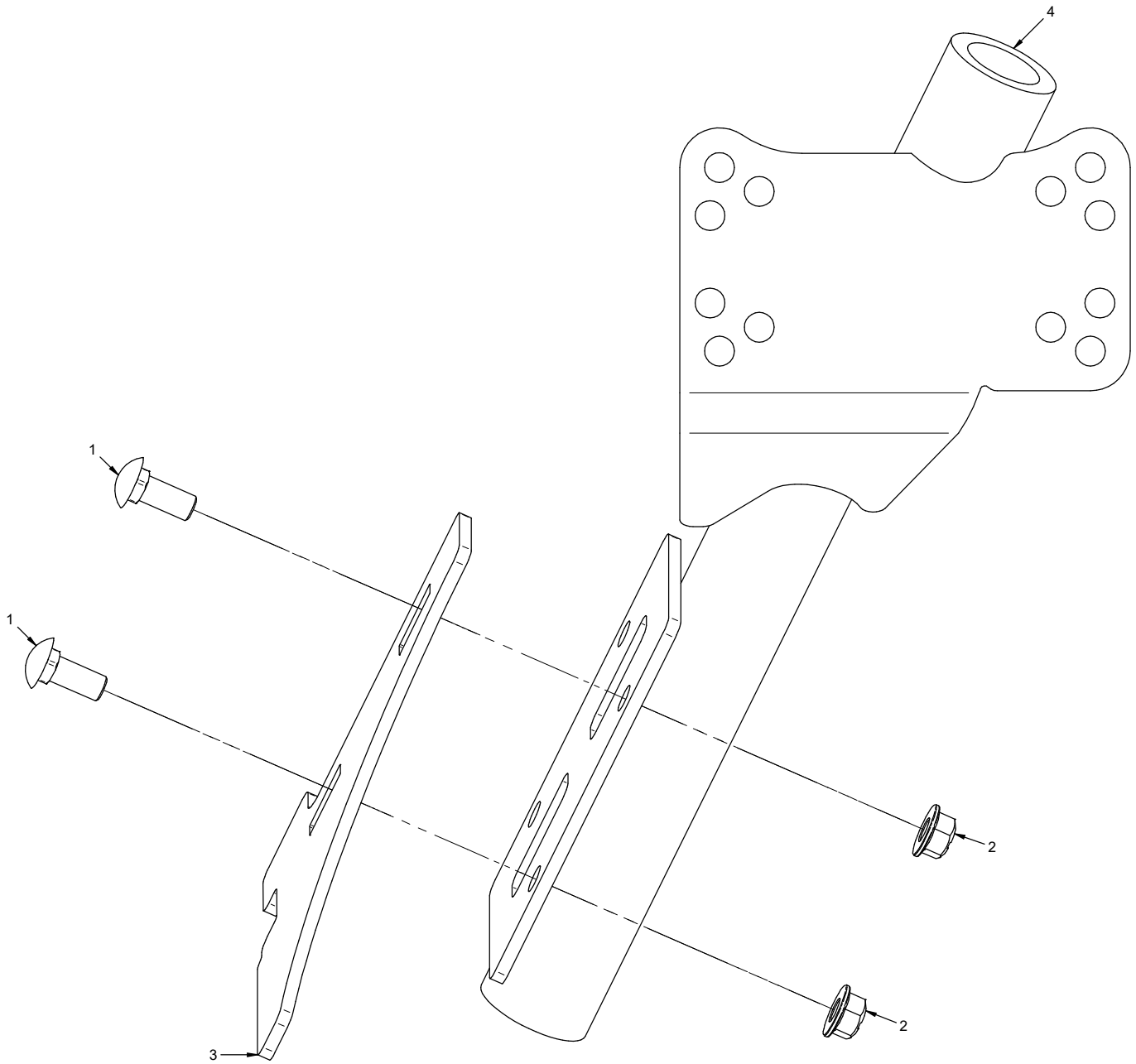
PARTS

Right Guard Assembly

REF.	PART NO.	DESCRIPTION	QTY.
1	97-0810-5	.Bolt, Carriage 1/2-13 X 1-1/4 GR5	4
2	99-E0103	.Nut, Locking Flange 1/2-13	4
3	AA-3015	.Belting, Disc Guard.	1
4	94-08	.Washer, Flat 1/2 USS	2
5	AA-6022	.Bracket, Plastic Lifter Mount RH.	1
6	AA-6032	.Bracket, Disc Guard RH.	1

PARTS

ILLUSTRATED DRAWING Right Debris Removal Plate



PARTS

Right Debris Removal Plate

REF.	PART NO.	DESCRIPTION	QTY.
1	97-0810-5	.Bolt, Carriage 1/2-13 X 1-1/4 GR5	2
2	99-E0103	.Nut, Locking Flange 1/2-13	2
3	AA-1074	.Plate, Debris Removal Arm	1
4	AA-6022	.Bracket, Plastic Lifter Mount RH.	1