

TILMOR

PARTS MANUAL

PLASTIC WINDER



Manufactured by
Tilmor LLC.
Made in the USA
Dalton, Ohio 44618

12-20002 Rev.01



**295 Kurzen Rd. N
Dalton, OH 44618
www.tilmor.com**

Notes

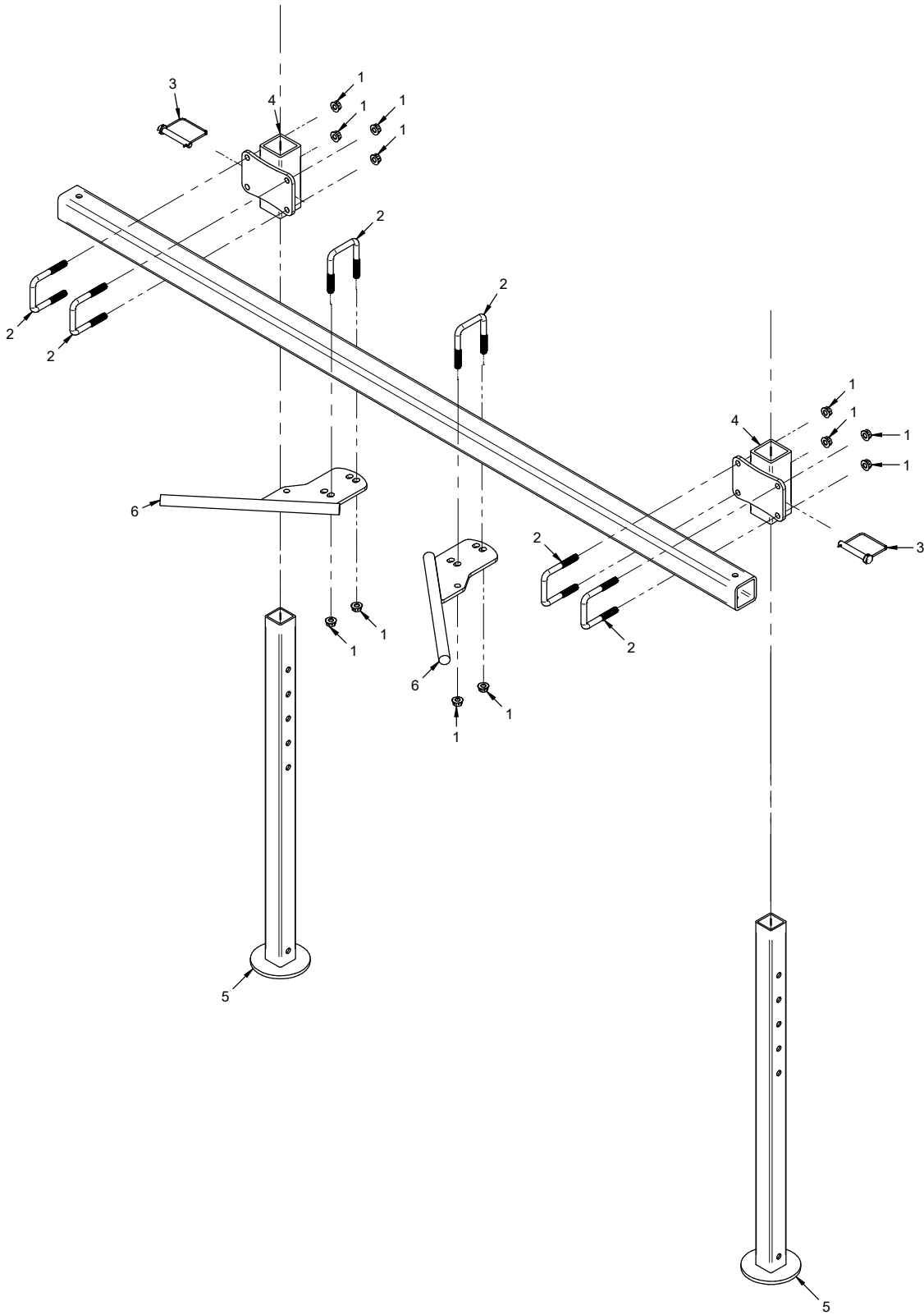
- If any component requires replacement, use only original Tilmor replacement parts.
- When ordering new components, be sure to order all required safety decals. All current safety decals must be affixed to the replacement components prior to installation of the component.

TABLE OF CONTENTS

Jack Stands & Plastic Mulch Guides.....	6
Reel Assembly	8
Reel Assembly	10
Pulley Shield	12
Drive Wheel Assembly	14
Reel Drive Assembly	16
Tensioner Pulley & Idler Pulley.....	18
Main Frame	20

PARTS

ILLUSTRATED DRAWING Jack Stands & Plastic Mulch Guides



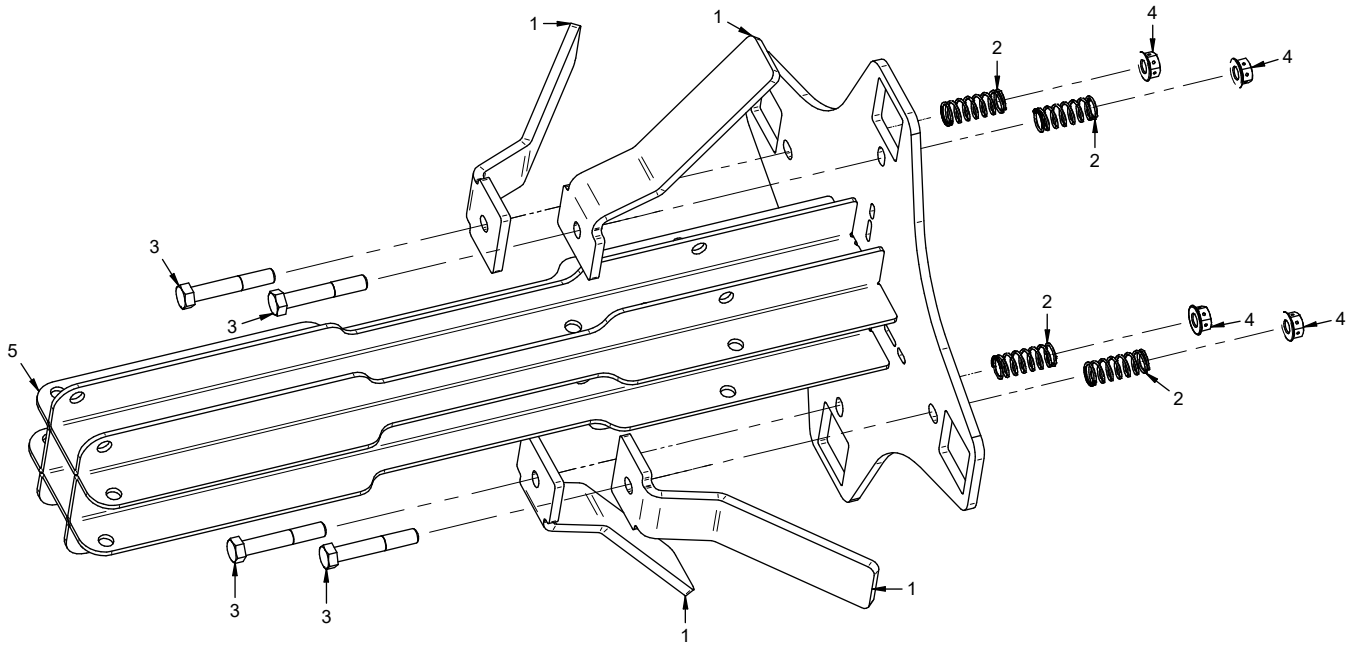
PARTS

Jack Stands & Plastic Mulch Guides

REF.	PART NO.	DESCRIPTION	QTY.
1	99-E0082	Nut, Locking Flange 3/8-16	12
2	11-0053	U-Bolt, 3/8-16 2-1/16" ID SQ Bend.	6
3	03-0003	Pin, Safety Snap 3/8 X 2-1/2"	2
4	AB-6001	Bracket, Jack Stand Mount.	2
5	AB-6002	Stand, Jack.	2
6	AB-6003	Bracket, Drag Mount.	2

PARTS

ILLUSTRATED DRAWING Reel Assembly



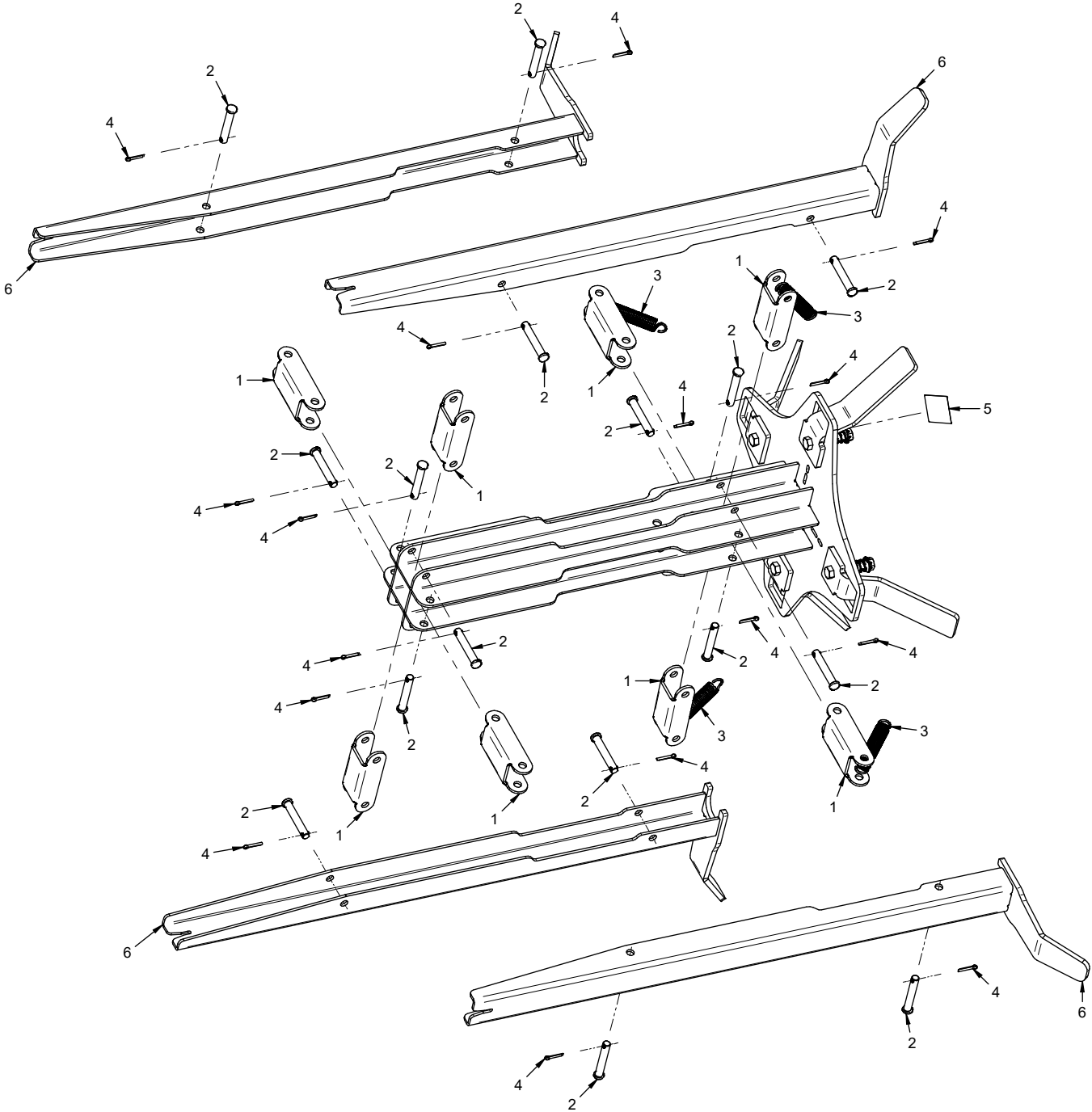
PARTS

Reel Assembly

REF.	PART NO.	DESCRIPTION	QTY.
1	AB-1004	.Plate, Winder Handle	4
2	41-0125	.Spring, Comp .6" OD x 1-1/2" Lg	4
3	90-0618	.Bolt, Hex 3/8-16 UNC x 2-1/4	4
4	99-E0082	.Nut, Locking Flange 3/8-16	4
5	AB-6006	.Bracket, Winder Pivot	1

PARTS

ILLUSTRATED DRAWING Reel Assembly



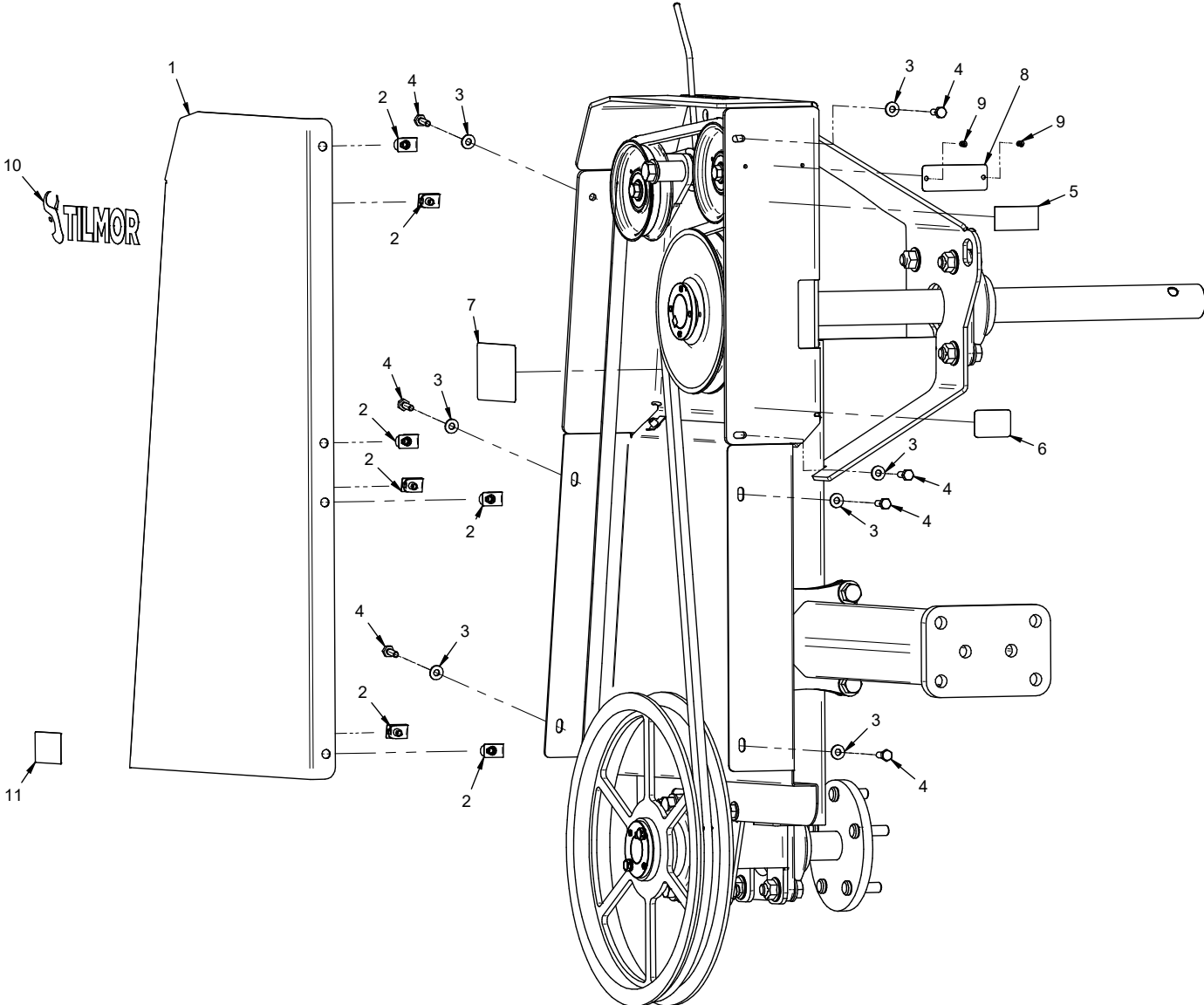
PARTS

Reel Assembly

REF.	PART NO.	DESCRIPTION	QTY.
1	AB-1012	.Plate, Winder Arm Connector	8
2	03-0618	.Clevis Pin, 3/8 X 2-1/4 ZP	16
3	41-0127	.Spring, Ext .60 x 4.25 OA LG	4
4	02-CP0406	.Cotter Pin, 1/8 X 3/4	16
5	00-0218	.Decal, Warning Pinch Point	1
6	AB-6009	.Bracket, Winder Arm	4

PARTS

ILLUSTRATED DRAWING Pulley Shield



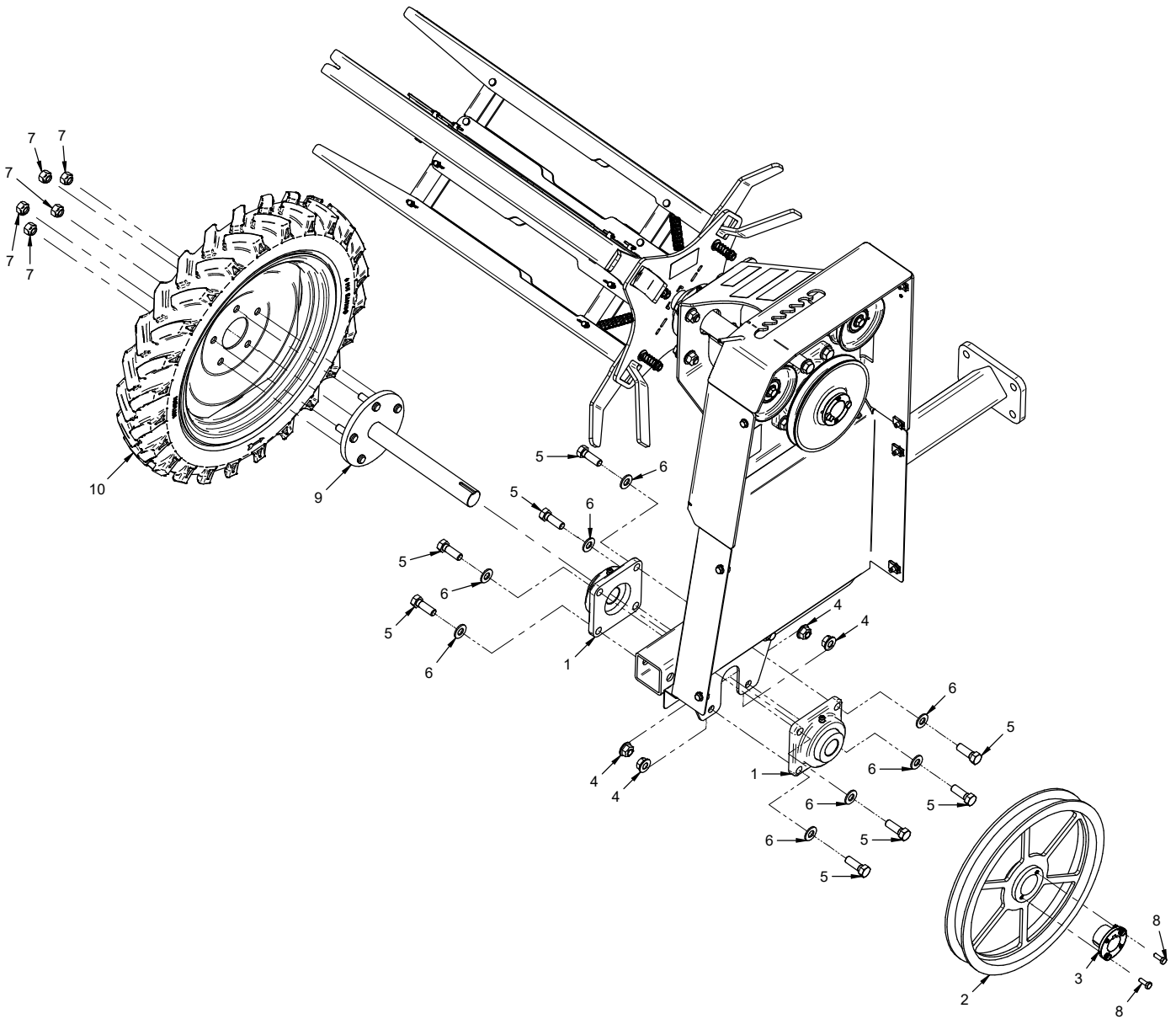
PARTS

Pulley Shield

REF.	PART NO.	DESCRIPTION	QTY.
1	AB-1002	.Shield, Outside Cover	1
2	99-E0046	.Nut, "U" 1/4-20 Extruded	7
3	95-04	.Washer, Flat 1/4 SAE	7
4	90-0406	.Bolt, 1/4-20 USS x 3/4"	7
5	00-0100	.Decal, Made In USA	1
6	00-0455	.Decal, Tilmor - Made in USA	1
7	00-0492	.Decal, Shield Missing	1
8	N/A	.Plate, Tilmor Serial Number	1
9	04-0029	.Rivet, Pop 1/8" X 1/4" SS	2
10	00-0506	.Decal, Tilmor	1
11	00-0216	.Decal, Warning Moving Parts	1

PARTS

ILLUSTRATED DRAWING Wheel Drive Assembly



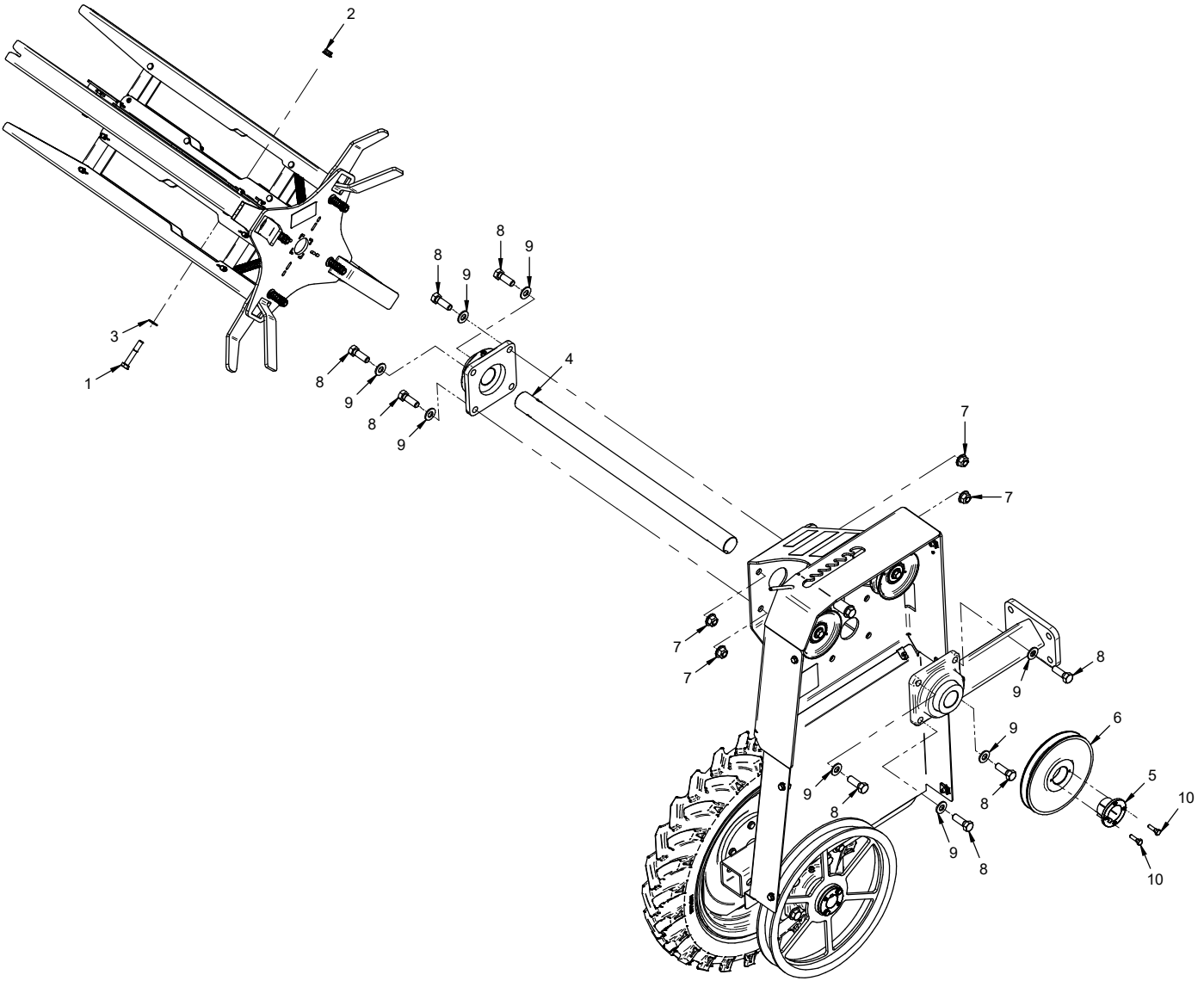
PARTS

Drive Wheel Assembly

REF.	PART NO.	DESCRIPTION	QTY.
1	55-FB22020	.Bearing, Flanged 1 1/4"	2
2	83-0072	.Pulley, 14" H-Bush	1
3	83-H20	.Bushing, 1-1/4"	1
4	99-E0103	.Nut, Locking Flange 1/2-13	4
5	90-0812	.Bolt, Hex 1/2-13 UNC x 1-1/2	8
6	95-08	.Washer, Flat 1/2 SAE	8
7	99-E0044	.Nut, Lug 7/16-20 SAE	5
8	90-0406	.Bolt, 1/4-20 USS x 3/4"	2
9	AB-6004	.Axle, Tire Mount	1
10	53-0182-R	.Wheel, Asm 12 x 6-4	1

PARTS

ILLUSTRATED DRAWING Reel Drive Assembly



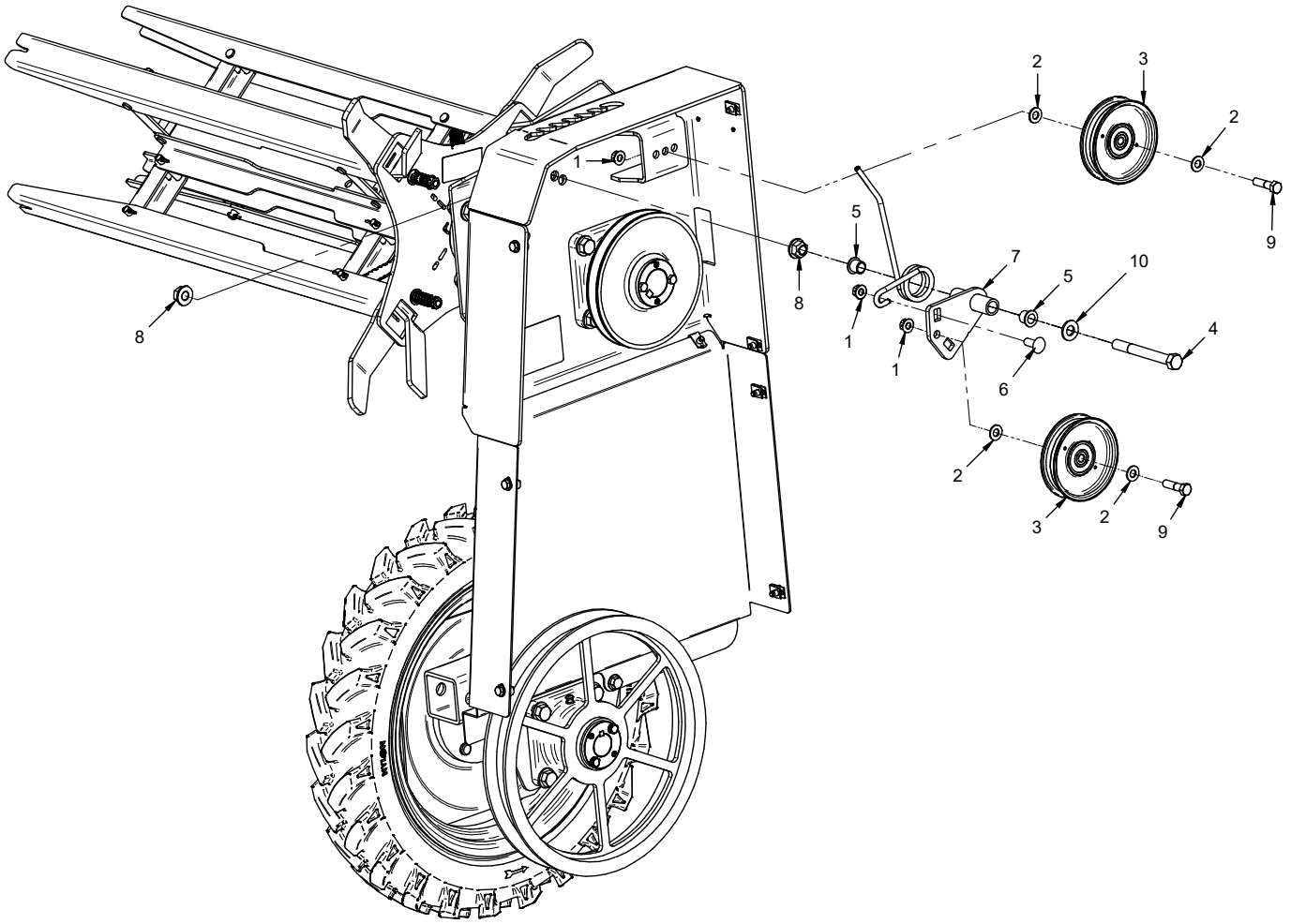
PARTS

Reel Drive Assembly

REF.	PART NO.	DESCRIPTION	QTY.
1	90-0618	.Bolt, Hex 3/8-16 UNC x 2-1/4	1
2	99-E0082	.Nut, Locking Flange 3/8-16	1
3	95-06	.Washer, Flat 3/8 SAE	1
4	AB-1030	.Shaft, Winder Axle	1
5	83-H24	.Bushing, 1-1/2" H	1
6	83-BK75H	.Pulley, 7.5" H-Bushing	1
7	99-E0103	.Nut, Locking Flange 1/2-13	8
8	90-0812	.Bolt, Hex 1/2-13 UNC x 1-1/2	8
9	95-08	.Washer, Flat 1/2 SAE	8
10	90-0408	.Bolt, Hex 1/4-20 UNC x 1"	2

PARTS

ILLUSTRATED DRAWING Tensioner Pulley & Idler Pulley



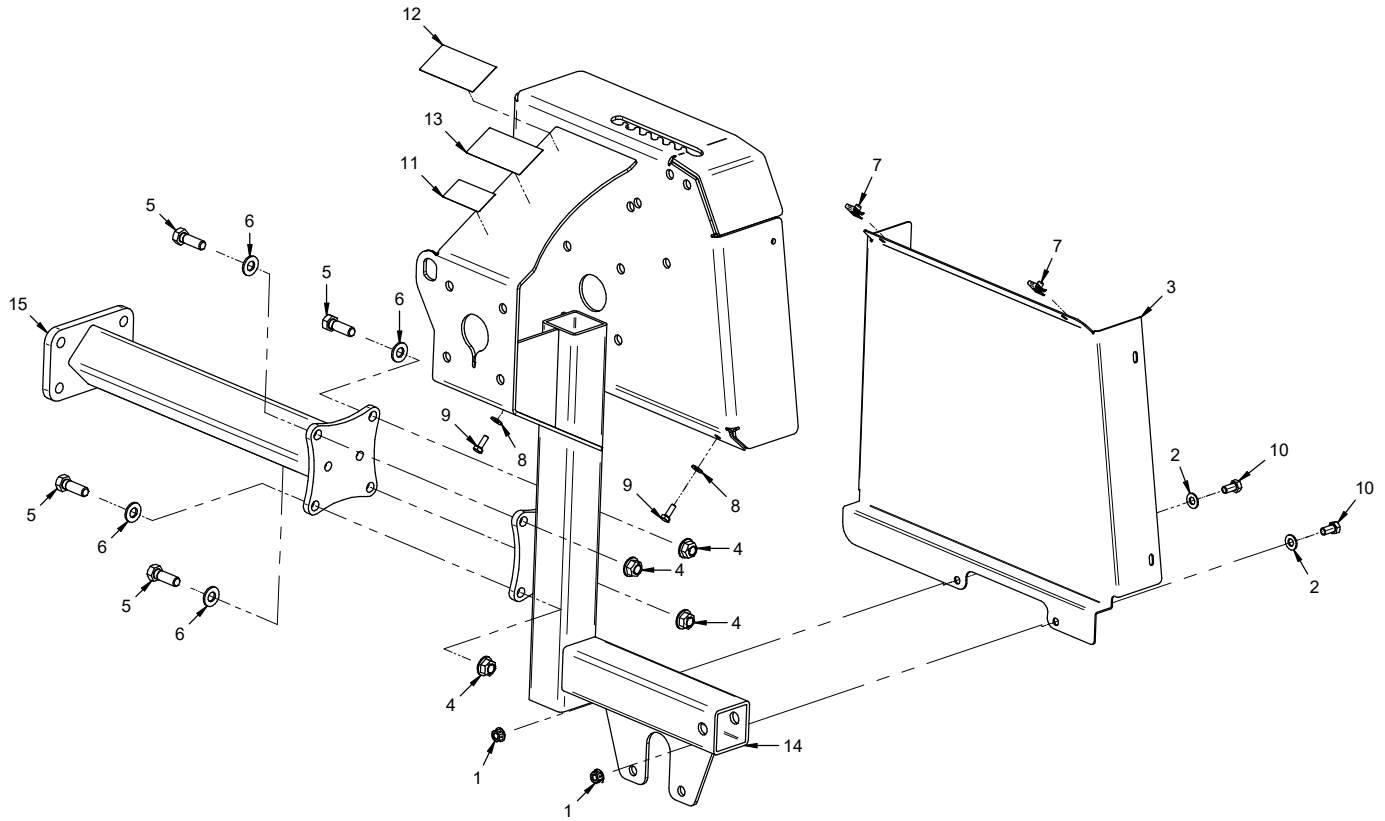
PARTS

Tensioner Pulley & Idler Pulley

REF.	PART NO.	DESCRIPTION	QTY.
1	99-E0082	.Nut, Locking Flange 3/8-16	3
2	95-06	.Washer, Flat 3/8 SAE	4
3	83-0037	.Pulley, Idler Flat 4" X 3/8	2
4	90-0836	.Bolt, Hex 1/2-13 UNC x 4-1/2	1
5	85-B0027	.Bushing, 1/2 ID X 5/8 OD X 5/8	2
6	97-0608	.Bolt, Carriage 3/8 x 1	1
7	AB-6007	.Bracket, Idler Pulley Mount	1
8	99-E0103	.Nut, Locking Flange 1/2-13	2
9	90-0612	.Bolt, Hex 3/8-16 UNC x 1-1/2	2
10	95-08	.Washer, Flat 1/2 SAE	1

PARTS

ILLUSTRATED DRAWING Main Frame



PARTS

Main Frame

REF.	PART NO.	DESCRIPTION	QTY.
Ref.	Part #.	Description	Qty.
1	99-E0082	Nut, Locking Flange 3/8-16	2
2	95-06	Washer, Flat 3/8 SAE	2
3	AB-1001	Shield, Lower Side Cover	1
4	99-E0103	Nut, Locking Flange 1/2-13	4
5	90-0812	Bolt, Hex 1/2-13 UNC x 1-1/2	4
6	95-08	Washer, Flat 1/2 SAE	4
7	99-E0046	Nut, "U" 1/4-20 Extruded	2
8	95-04	Washer, Flat 1/4 SAE	2
9	90-0406	Bolt, 1/4-20 USS x 3/4"	2
10	90-0606	Bolt, Hex 3/8-16 UNC x 3/4	2
11	00-0216	Decal, Warning Moving Parts	1
12	00-0217	Decal, Warning Read Owners Man	1
13	00-0220	Decal, General Safety	1
14	AB-6008	Frame, Main	1
15	AB-6005	Bracket, Tool Bar Mount	1