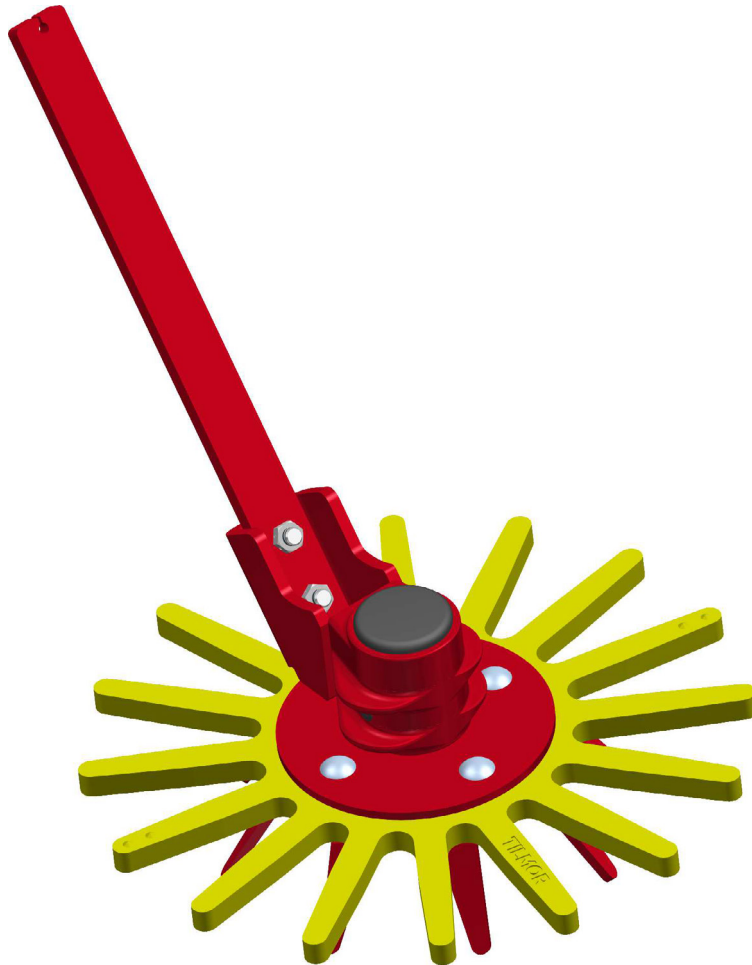




PARTS MANUAL

FINGER WEEDER AW-9003



Manufactured by
Tilmor LLC.
Made in the USA
Dalton, Ohio 44618

12-20003 Rev.02



**295 Kurzen Rd. N
Dalton, OH 44618
www.tilmor.com**

Notes

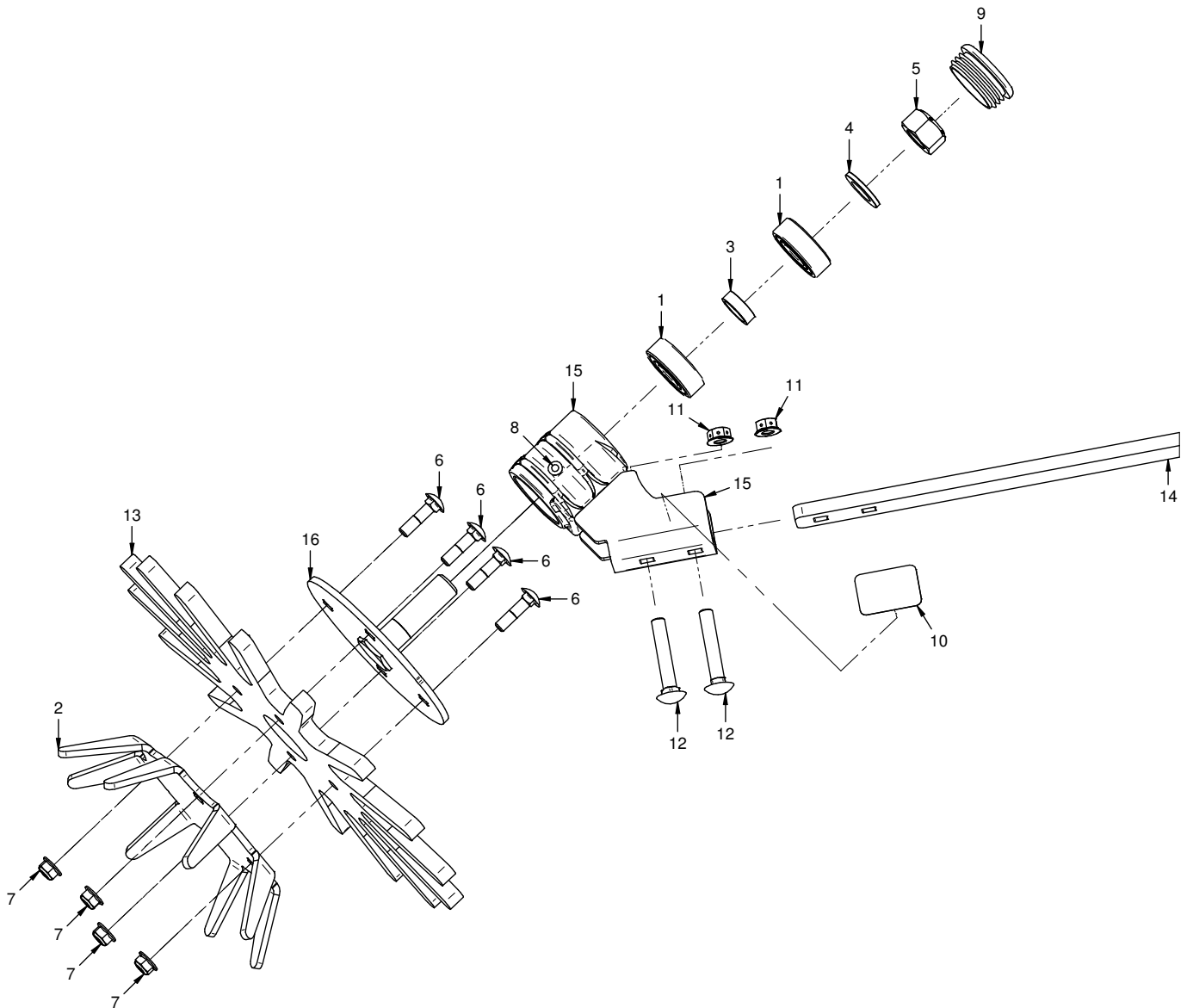
- If any component requires replacement, use only original Tilmor replacement parts.
- When ordering new components, be sure to order all required safety decals. All current safety decals must be affixed to the replacement components prior to installation of the component.

TABLE OF CONTENTS

Finger Weeder	4
---------------------	---

PARTS

ILLUSTRATED DRAWING Finger Weeder



PARTS

Finger Weeder

REF.	PART NO.	DESCRIPTION	QTY.
1	55-0023	Bearing, Ball .75 ID X 1.78 OD	2
2	AW-1033	Plate, Drive	1
2 (ALT)	AW-1332	Plate, Drive 13"	1
3	AW-3010	Spacer, Bearing	1
4	99-B0057-2	Washer, Mach 3/4 x 1-1/4 10 GA ZP	1
5	99-A12NF	Locknut, Stover 3/4-16 SAE	1
6	97-0510	Bolt, Carriage 5/16 x 1-1/4	4
7	99-E0102	Nut, Locking Flange 5/16-18	4
8	05-0173	Plug, 1/4" Push-In Black	2
9	05-0172	Plug, Ribbed Black LDPE	1
10	00-0455	Decal, Tilmor - Made in USA	1
11	99-E0082	Nut, Locking Flange 3/8-16	2
12	97-0618	Bolt, Carriage 3/8 x 2 1/4	2
12 (ALT)	97-0608	Bolt, Carriage 3/8 x 1	2
13	AW-3011	Weeder, Finger Medium 13" (Yellow)	1
13 (ALT)	AW-3013	Weeder, Finger Hard 13" (Orange)	1
14	AW-1140	Plate, Flat Shank	1
14 (ALT)	AW-1164	Plate, A Blade Offset Shank	1
14 (ALT)	AA-1094	Tube, Modular Tool Bar 1-1/2" SQ	1
14 (ALT)	AA-1095	Tube, Modular Tool Bar 1-1/2" SQ	1
14 (ALT)	AA-1096	Tube, Modular Tool Bar 1-1/2" SQ	1
14 (ALT)	AA-1105	Tube, Modular Tool Bar 37"	1
15	AW-6050	Hub, Bolt On Shank	1
16	AW-6008	Spindle, Finger Weeder	1