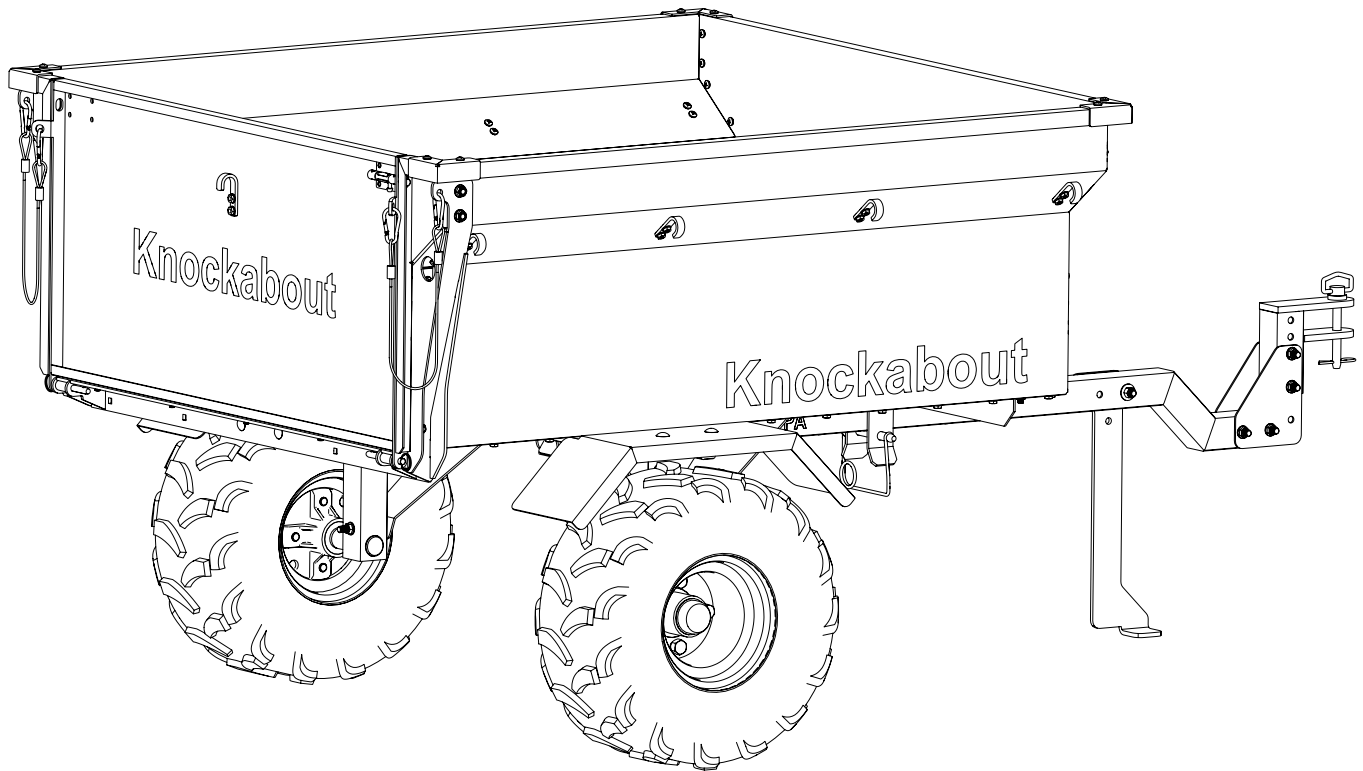


# ZIMMERMAN™

## Owner's Manual

### Knockabout Trailer

Model: KT1800



Manufactured by PBZ LLC  
A Paul B Zimmerman Inc. Company  
[www.zimmermanequipment.com](http://www.zimmermanequipment.com)

Form: KT1800OM  
Rev. A Date: 08/22

# Table Of Contents

Identification of Machine .....	2
Specifications.....	2
Introduction .....	3
Safety .....	3
Signal Words.....	3
General Guidelines.....	4
Before Operation .....	4
During Operation .....	4
Following Operation .....	4
Pinch Points .....	5
Assembly Instructions .....	6-7
Operation .....	8
Maintenance and Adjustments.....	8-9
Routine Maintenance.....	8
Maintenance Materials.....	9
Adjustments.....	9
Breakdowns and Parts Lists .....	10-13
Base Unit Breakdown .....	10-11
Base Unit Parts List.....	12-13
Limited Warranty .....	14
Ordering Parts .....	14

## Identification of Machine

- Model #'s: KT1800

## Specifications

The Knockabout (Model# KT1800):

Trailer Size .....	49" wide x 80" long
Bed Size.....	36" wide x 48" long
Bed Volume .....	18 cubic feet
Load Capacity .....	1,200 lbs
Hitch Height .....	9"-21"
Ground Clearance .....	18"

# Introduction

Please read and understand this manual and its instructions and warnings completely before using the trailer.

- Read and understand your tow vehicles owner's manual and towing safety instructions.
- This unit is intended for off road use only. Do not use on public roads or highways.
- Tow vehicle stability may be affected by the attachment and towing of this unit. Be aware of conditions on slopes, and rough or uneven terrain.
- Do not allow anyone to ride or sit in tow behind equipment during operation.

# Safety

## Safety Alert Symbol

The safety alert symbol for safety signs & decals that contain one of the three signal words (DANGER, WARNING, & CAUTION) will appear as shown in Figure 1.



Figure 1: Safety Alert Symbol

---

## Signal Words

There are three signal words; DANGER, WARNING, and CAUTION. The signal words bring attention to the existence and relative seriousness of a hazard.

- **DANGER:** The signal word DANGER indicates an imminently hazardous situation which, if not avoided, will result in death or serious injury
- **WARNING:** The signal word WARNING indicates a potentially hazardous situation which, if not avoided, could result in death or serious injury.
- **CAUTION:** The signal word CAUTION indicates a potentially hazardous situation which, if not avoided, may result in minor or moderate injury.

Additional Signal Words.

- **NOTE:** The signal word NOTE provides information on operator safety and operator tips.
- **IMPORTANT:** The signal word IMPORTANT indicates a recommended action or a restriction that will ensure correct equipment operation and performance.

# Safety



## General Guidelines

Every year many unnecessary accidents occur due to improper equipment handling and a disregard for safety precautions. You, the operator, can avoid accidents by observing the precautions listed in this section.

- The operator should be a responsible adult. Do not allow persons to operate this equipment until they have displayed a thorough understanding of equipment safety precautions and operational use!
- Never attempt to operate this unit when under the influence of alcohol or drugs.
- The best defense against accidents is a careful and responsible operator.
- This unit is intended for off road use only. Do not use on public roads or highways.
- Tow vehicle stability may be affected by the attachment and towing of this unit. Be aware of conditions on slopes, and rough or uneven terrain.
- Do not allow anyone to ride or sit in tow behind equipment during operation.
- Remember that accidents can even happen to seasoned operators. Always take your time and follow all safety instructions.
- If there is any portion of this manual that you do not fully understand, please contact the original retailer of this product.



## Before Operation

- Carefully study and understand this owner's manual.
- Do not wear loose-fitting clothing which may catch in moving parts.
- Never exceed the tow vehicle manufacturer's load rating.
- Give the equipment a visual inspection for any worn parts, loose bolts, or other visible problems, and make the necessary repairs. See the "Maintenance and Adjustments" section for instructions.
- Make sure the area is clear of any people or obstructions before using the equipment.
- Have all operators practice operating the equipment and its attachments.



## During Operation

- Always be aware of bystanders, particularly children! Always look before moving the equipment or the tow vehicle.
- Do not allow anyone to ride on tow behind equipment while in use.
- Keep hands and body parts clear of all moving parts.
- Be aware of dangerous terrain such as holes, slopes, drop-offs, banks, rocks, and hidden hazards.
- **WARNING:** Be aware of the possibility of tipping if operating across too steep an incline. Ideally, operate the tow vehicle and equipment up and down slopes, not across.
- Allow for equipment size when making turns.
- **WARNING:** Do not unhitch trailer with a load in the bed, or attempt to dump the trailer with a load when unhitched.



## Following Operation

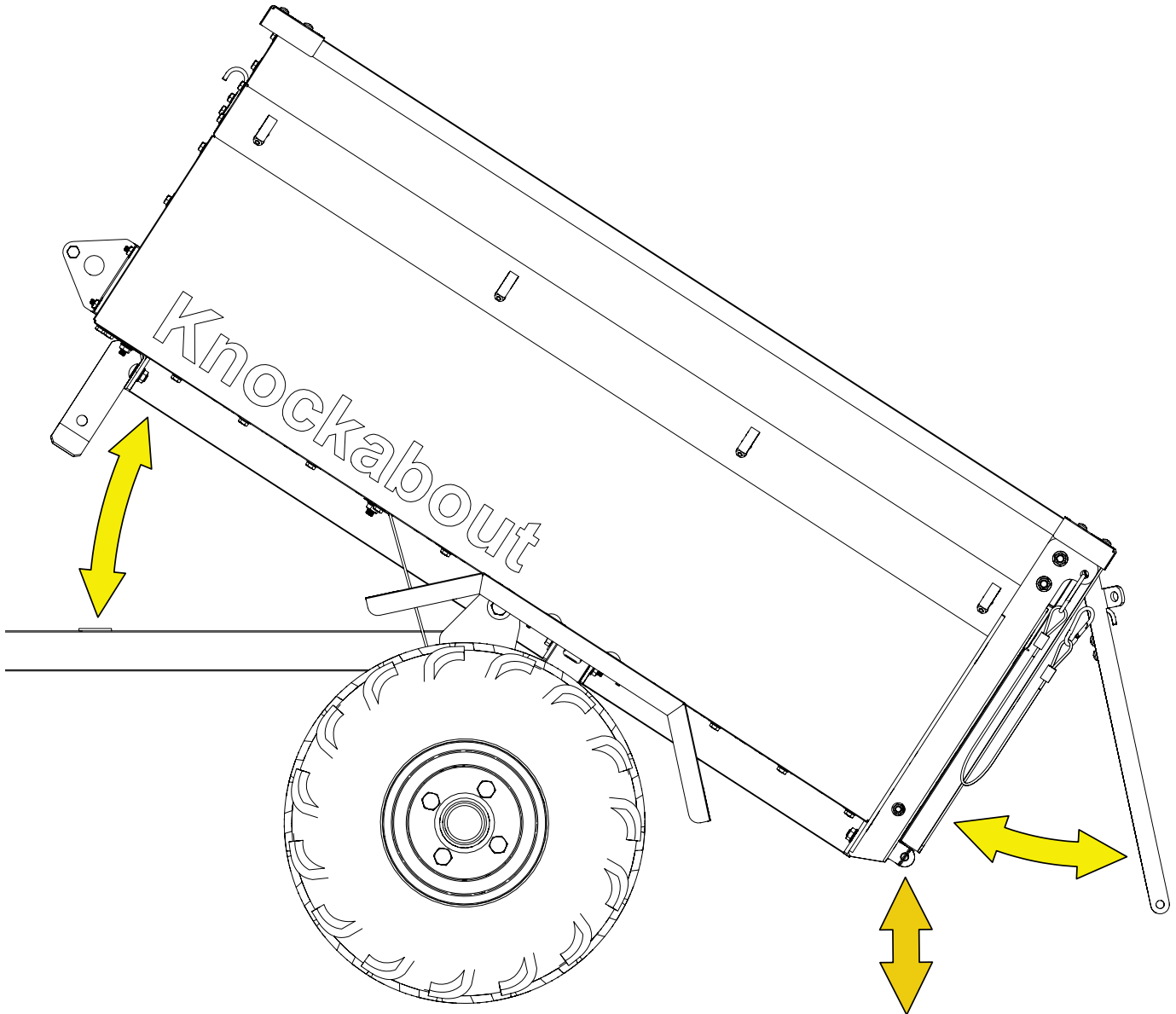
- Following operation, stop the tow vehicle, set brakes, shut off engine, and remove ignition key.
- Park the equipment on a hard level surface
- Do not permit children to play on or around equipment.



## Pinch Points

Be aware of the following pinch points when using the trailer:

- Between the bottom of the bed frame and the hitch.
- Between the ground and the bed when dumping.
- Around the sides and bottom of the tailgate.



# Assembly Instructions

Use the assembly instructions to ensure proper assembly. Before assembling, ensure that the pallet contains the necessary components and parts.

Installation Time:

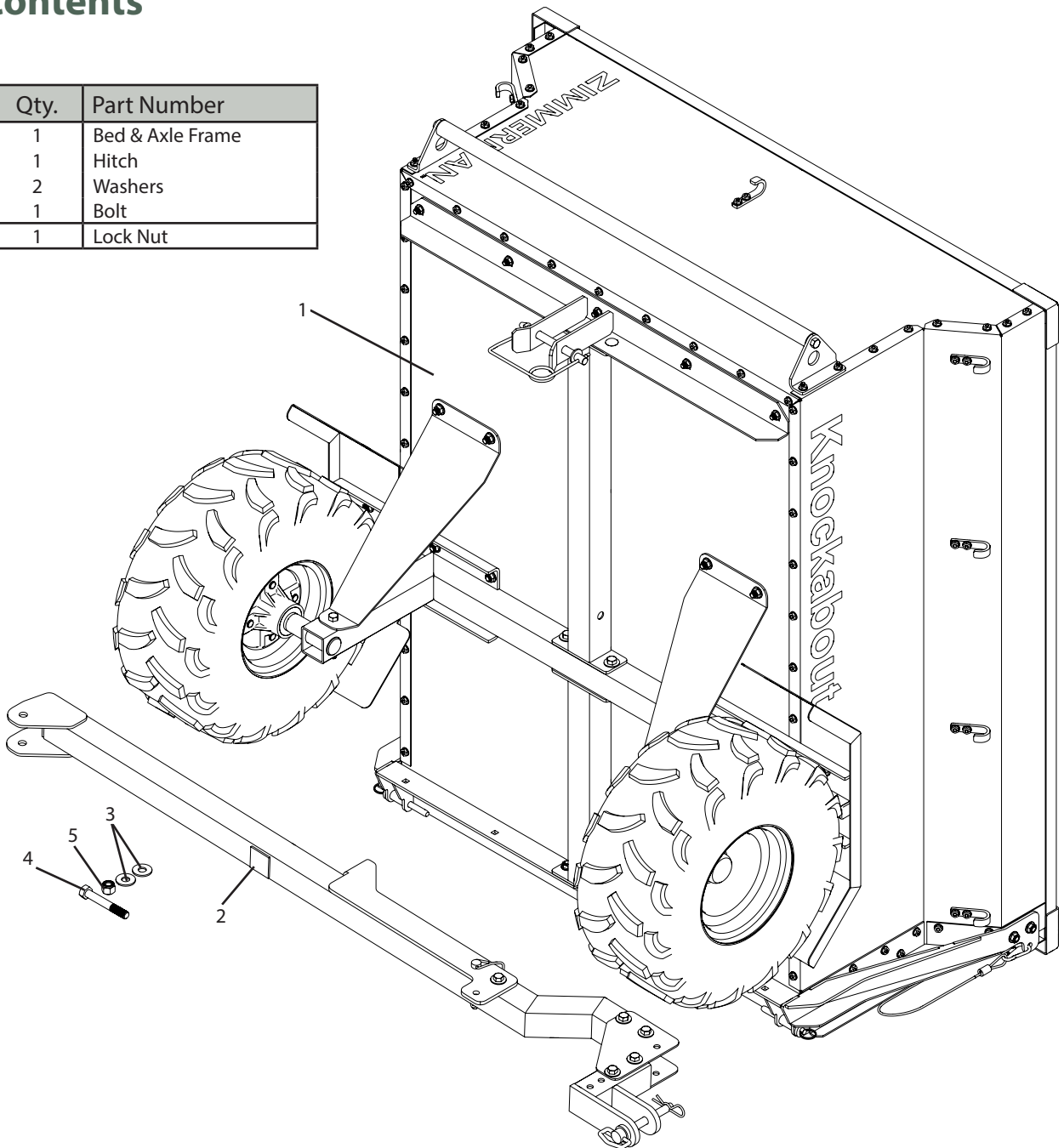
- Approximately 15 minutes

Recommended Tools

- 3/4" socket or wrenches
- Battery or air powered impact

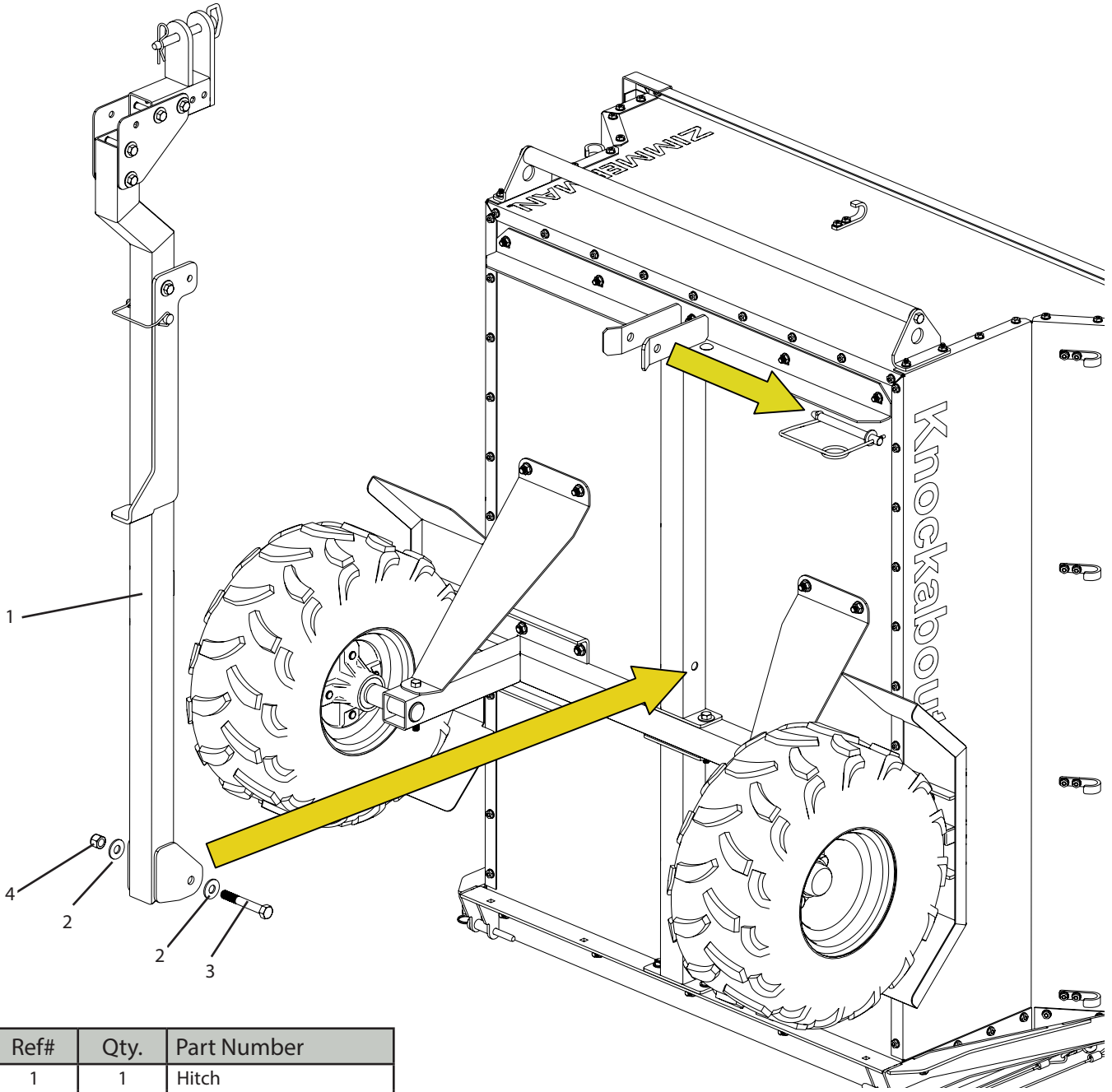
## Pallet Contents

Ref#	Qty.	Part Number
1	1	Bed & Axle Frame
2	1	Hitch
3	2	Washers
4	1	Bolt
5	1	Lock Nut



# Assembly Instructions

## Step 1



Ref#	Qty.	Part Number
1	1	Hitch
2	2	Washers
3	1	Bolt
4	1	Lock Nut

# Operation

## Operation

**IMPORTANT:** Before use, read this entire manual and know all safety precautions. Always take your time and be alert when operating your equipment in order to avoid an accident.

- To use the dump capability of the trailer, remove the pin (a) from underneath the front of the bed (Figure 1).
- The tailgate can be removed completely by removing the hinge pins (a), sliding the latch bolts (b), and unclipping the cables (c) (Figure 2).

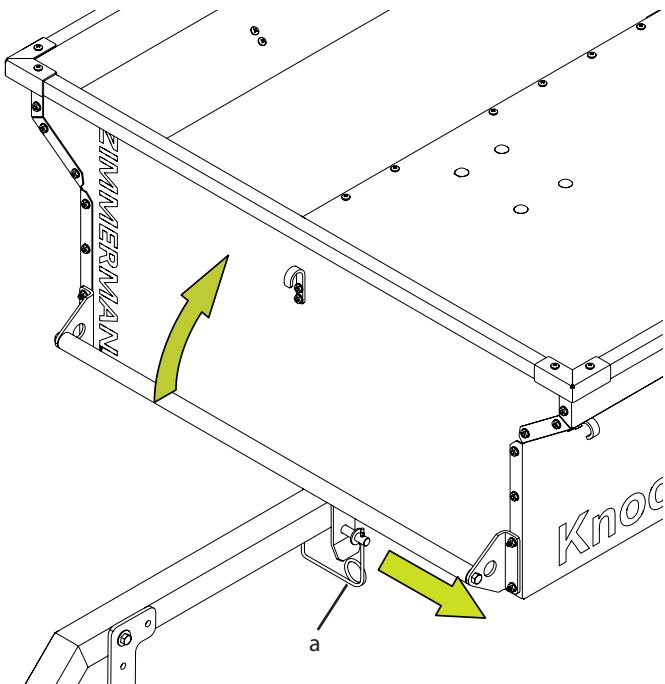


Figure 1: Remove Pin to Dump Trailer

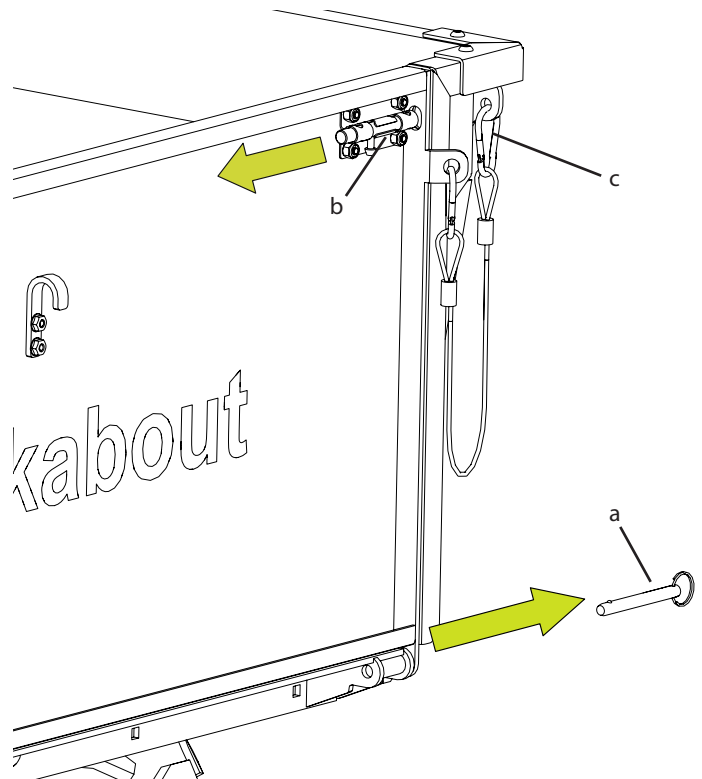


Figure 2: Tailgate Removal

# Maintenance and Adjustments

## Routine Maintenance

**IMPORTANT:** Perform routine maintenance on your equipment before and after each use. Good maintenance practices will help to guard against any unnecessary equipment breakdowns or accidents.

1. It is recommended to perform a visual and physical inspection for worn parts, loose bolts, or other visible problems. Make all necessary repairs before use. Contact the original retailer for instructions on ordering parts and technical help.
2. Check tire pressure.
3. Keeping the unit as clean and dry as possible when not in use will improve the life span of the unit.
4. The wheel hubs use sealed tapered bearings. Repack wheel hub bearings with general purpose grease annually.



# Maintenance and Adjustments

## Maintenance Materials

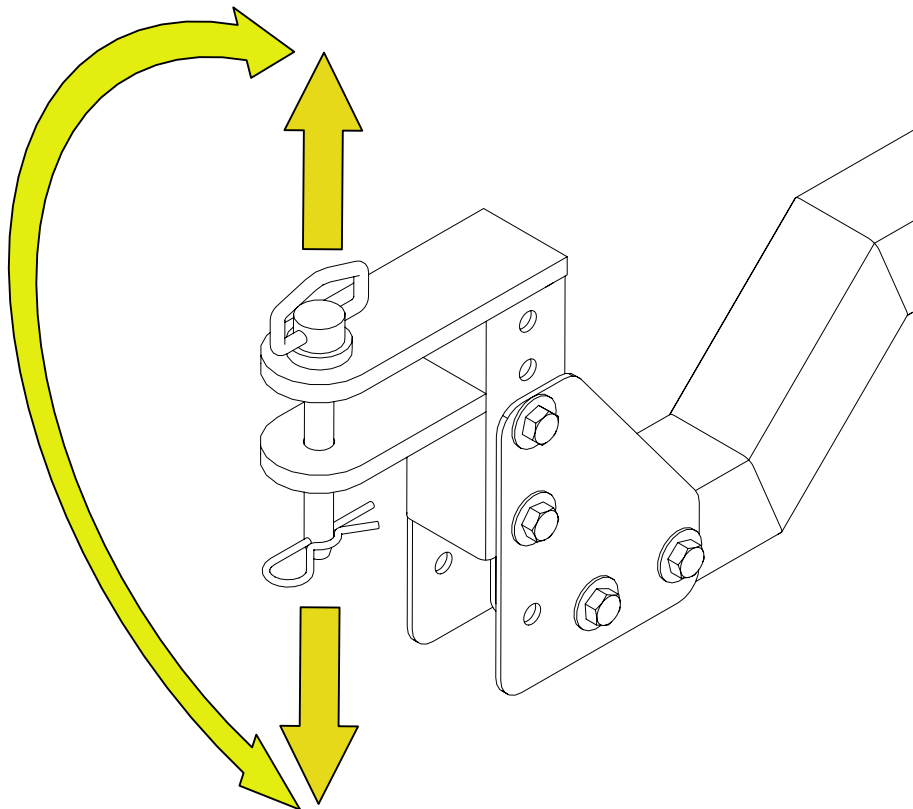
-Specifications, including quantities / capabilities for normal maintenance materials, such as:

1. General-purpose lithium grease (See "Routine Maintenance" section)

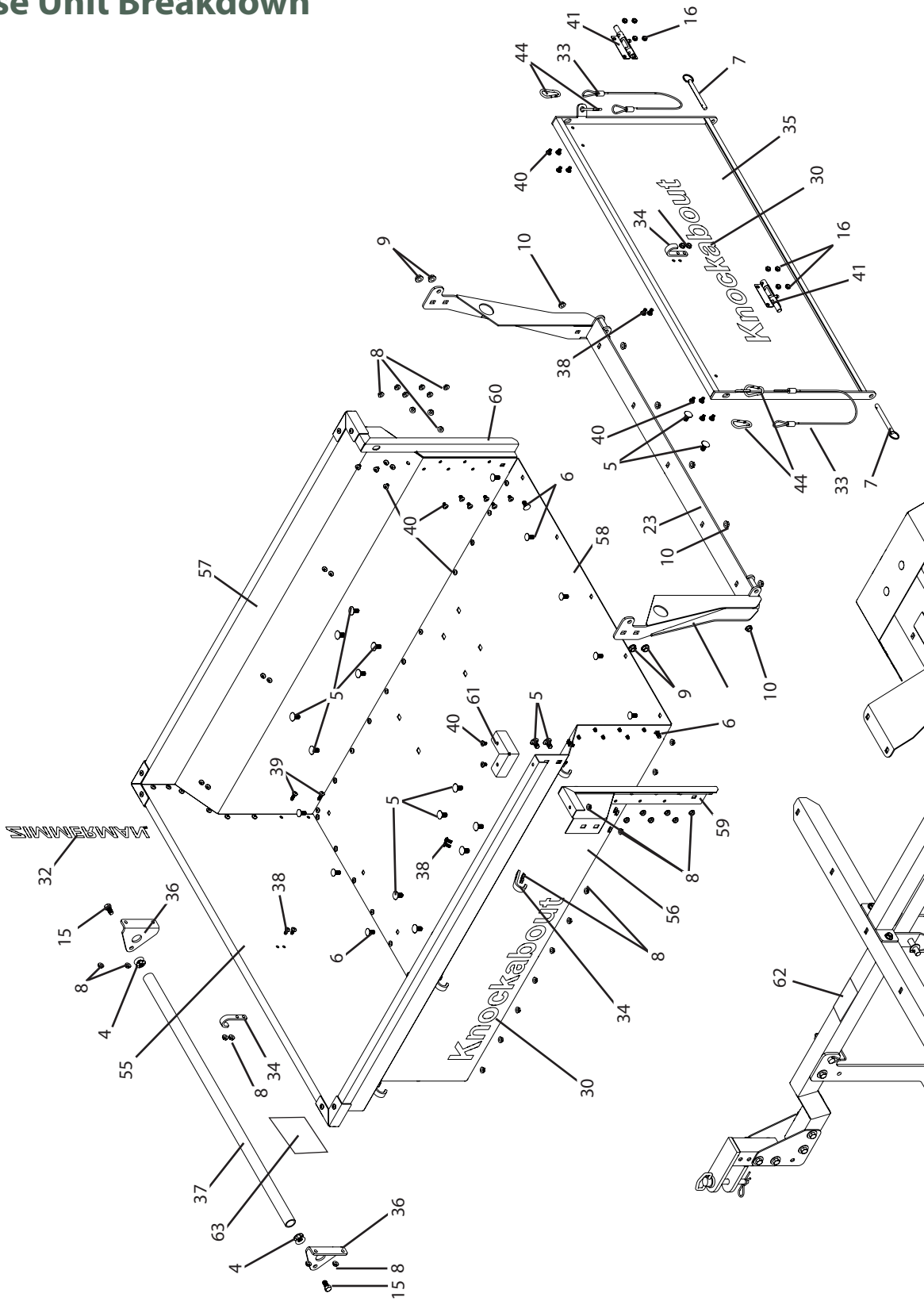
---

## Adjustments

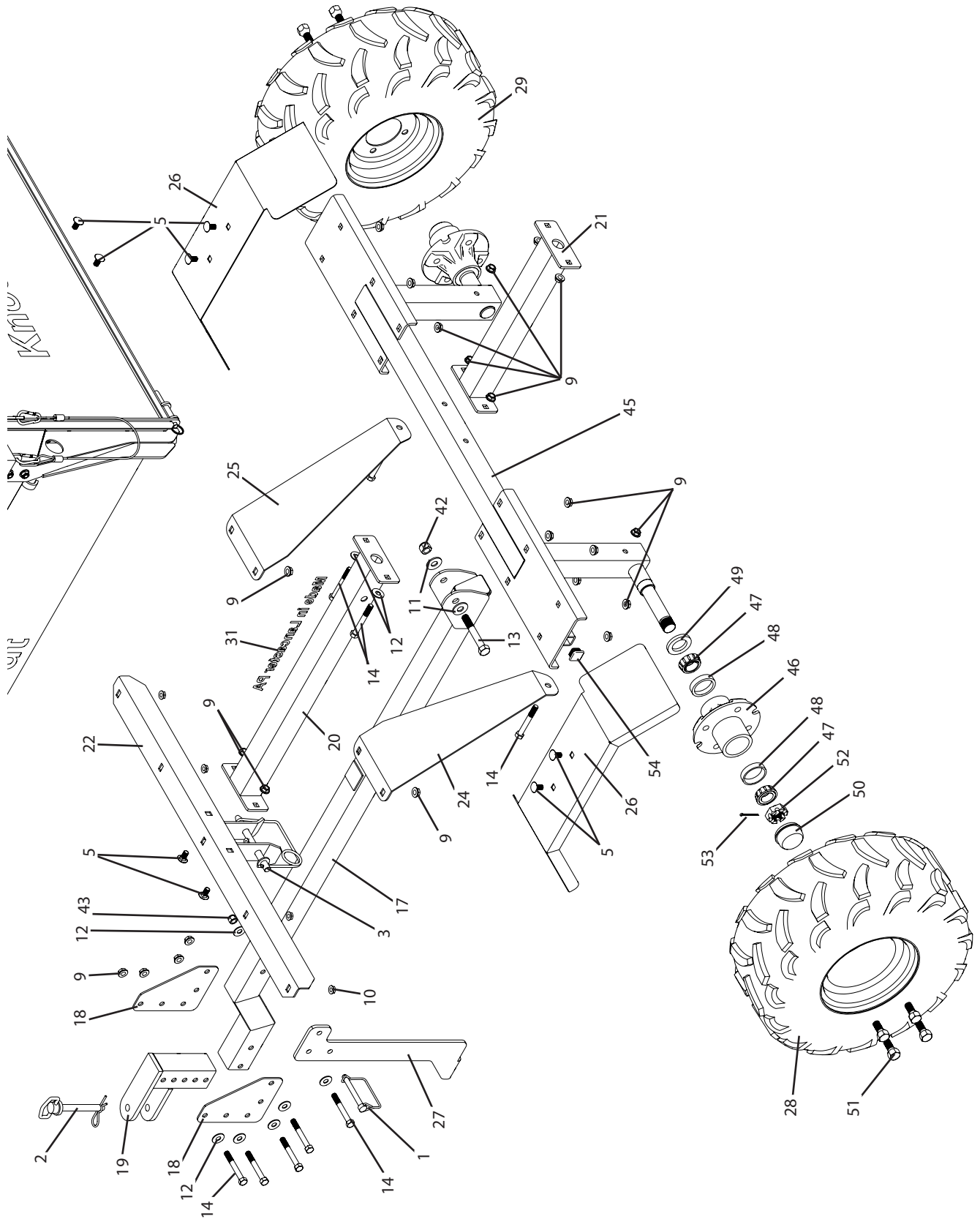
The trailer hitch is able to be bolted on or rotated to fit the hitch height of the tow vehicle.



## Base Unit Breakdown



## Base Unit Breakdown



# Breakdowns & Parts Lists

## Base Unit Parts List

Ref#	Qty.	Part Number	Description
1	1	00267	Pin, Square Lock 3/8" x 3"
2	1	01500X	Hitch Pin, 1/2"x3-5/8", Red G5
3	1	15195	Pin, Snap-Lock 1/2" x 4 1/4"
4	2	2417T18	Leveling Mount Insert, Round Tube, 1" OD x 15/16" ID, 3/8-16 threads
5	24	CB38*34G5	Bolt, Carriage 3/8-16 x 3/4" Gr 5
6	12	CB516*34G5	Bolt, Carriage 5/16-18 x 3/4" Gr 5
7	2	DRP38X3	Detent Ring Pin 3/8" x 3"
8	93	NNC14	Nut, Flange 1/4-20
9	32	FN38	Nut, Flange 3/8-16
10	12	FN516	Nut, Flange 5/16-18
11	2	FW12	Washer, Flat 1/2" USS
12	8	FW38	Washer, Flat 3/8"
13	1	H5C12*312	Bolt, Hex 1/2-13 x 3-1/2" Gr 5
14	9	H5C38*3	Bolt, Hex 3/8-16 x 3" Gr 5
15	2	H5C38*34	Bolt, Hex 3/8-16 x 3/4" Gr 5
16	8	JNNC14	Nylon Lock Jam Nut, 1/4-20
17	1	KT101-SGB	ATV/UTV Trailer, Tongue, Black
18	2	KT102-SGB	ATV/UTV Trailer, Hitch Connector Plate, Black
19	1	KT103-SGB	ATV/UTV Trailer, Hitch, Black
20	1	KT104A-SGB	ATV/UTV Trailer, Center Frame, Front, Black
21	1	KT104B-SGB	ATV/UTV Trailer, Center Frame, Rear, Black
22	1	KT105-SGB	ATV/UTV Trailer, Front Frame, Black
23	1	KT106-1003	ATV/UTV Trailer, Rear Frame, RAL1003 (Yellow)
24	1	KT109A-1003	ATV/UTV Trailer, Axle Brace, A, RAL1003 (Yellow)
25	1	KT109B-1003	ATV/UTV Trailer, Axle Brace, B, RAL1003 (Yellow)
26	2	KT110-SGB	ATV/UTV Trailer, Fender, Black
27	1	KT114-SGB	ATV/UTV Trailer, Jackstand, Black
28	1	KT115A	ATV/UTV Trailer, Wheel, Side A
29	1	KT115B	ATV/UTV Trailer, Wheel, Side B
30	3	KT116	Decal, Knockabout
31	1	KT117	Decal, Made in Location
32	1	KT118	Decal, Zimmerman
33	2	KT120	ATV/UTV Trailer, Tailgate Cable
34	10	KT131-7004	ATV-UTV Trailer, Bed Hook, Coated
35	1	KT132-7004	ATV/UTV Trailer, Tailgate, RAL7004 (Gray)
36	2	KT133-1003	ATV/UTV Trailer, Bed Handle Mount, Yellow
37	1	KT134-7004	ATV/UTV Trailer, Bed Handle, Gray
38	89	BHC14X12Z	Button Head Cap Screw, 1/4-20 x 1/2", Zinc Plated
39	4	BHC14X34Z	Button Head Cap Screw, 1/4-20 x 3/4", Zinc Plated
40	8	MR14X38	Machine Screw Combo 1/4-20 x 3/8
41	2	N162370	Barrel Bolt Latch, 4", Zinc
42	1	NNC12	Nut, Lock Nylon 1/2-13
43	1	NNC38	Nut, Lock Nylon 3/8-16
44	4	SL14	Snap Link, all purpose, Zinc, 1/4"

# Breakdowns & Parts Lists

## Base Unit Parts List

Ref#	Qty.	Part Number	Description
45	1	KT108-SGB	ATV/UTV Trailer, Axle Weldment, Black
46	2	MWH4C	Hub, F/Wheel W-4" Bolt Center
47	4	L44643	* + Tapered bearing, 1"
48	4	L44610	* Bearing cup, 1.98" O.D.
49	2	12192VB	* Oil seal, 1.25" I.D. x 1.979" O.D. x .25" W
50	2	1550	* Hub cap, 1.988" O.D. x 1.21" I.D.
51	8	5400820	* wheel bolt, 1/2-20 x 1"
52	2	CJNF1	* Castle jam nut, 1-14
53	2	CT18*2	* Cotter pin, 1/8" x 2"
54	2	PPSQ1*14-20	Plug, Plastic 1" x 1" x 14-20 Ga Black
55	1	KT126-7004	ATV-UTV Trailer, Bed Front, Coated
56	1	KT127A-7004	ATV-UTV Trailer, Bed Side A, Coated
57	1	KT127B-7004	ATV-UTV Trailer, Bed Side B, Coated
58	1	KT128-7004	ATV-UTV Trailer, Bed Bottom, Coated
59	1	KT129A-7004	ATV-UTV Trailer, Bed Rear Section, Side A, Coated
60	1	KT129B-7004	ATV-UTV Trailer, Bed Rear Section, Side B, Coated
61	4	KT130-7004	ATV-UTV Trailer, Bed Corner Guard, Coated
62	1	DE240	Decal, WARNING, Pinch Point
63	1	DE241	Decal, WARNING, Read Owner's Manual and Do Not Ride

\* Included in item 46.

+ Use Part# L44649 if spindle is 1.0625" in diameter.

# Limited Warranty

Model #: KT1800

## Warranty Coverage

PBZ, LLC hereby provides a Limited One (1) Year Warranty on the Knockabout, manufactured by PBZ, LLC. Knockabouts manufactured by PBZ, LLC are warranted against any manufacturer's defects in any of the equipment's components in the 12 months following the original date of purchase.

Defective components will be repaired or replaced at the discretion of the manufacturer. It is the responsibility of the purchaser to return warranted components to the manufacturer. This warranty is limited to the repair or replacement of equipment components only. PBZ, LLC is not to be held liable for incidental or consequential damages of any kind. This warranty covers the purchaser of this equipment and any other owners who own it during the one year warranty period.

To retain the warranty, the equipment must be operated and maintained as ascribed by its owner's manual. For warranty service, please have a copy of the purchase invoice available.

## Warranty Is Void if:

1. The equipment has been subjected to, in the opinion of PBZ, LLC, negligent handling, misuse, an accident, or if the instructions in the owner's manual were not completely followed.
2. The equipment's components have been altered in any manner or repairs have taken place with unapproved parts.

## Getting Warranty Service

All warranty claims must be made through the original retailer. All warranty claims must be submitted with an invoice or a proof of purchase that denotes the purchase date and place of purchase. If you have any questions or comments concerning this warranty, please contact the original retailer.

## Ordering Parts

Please contact the original retailer to order replacement parts for your product.

# ZIMMERMAN™

Manufactured by PBZ LLC  
A Paul B Zimmerman Inc. Company  
[www.zimmermanequipment.com](http://www.zimmermanequipment.com)