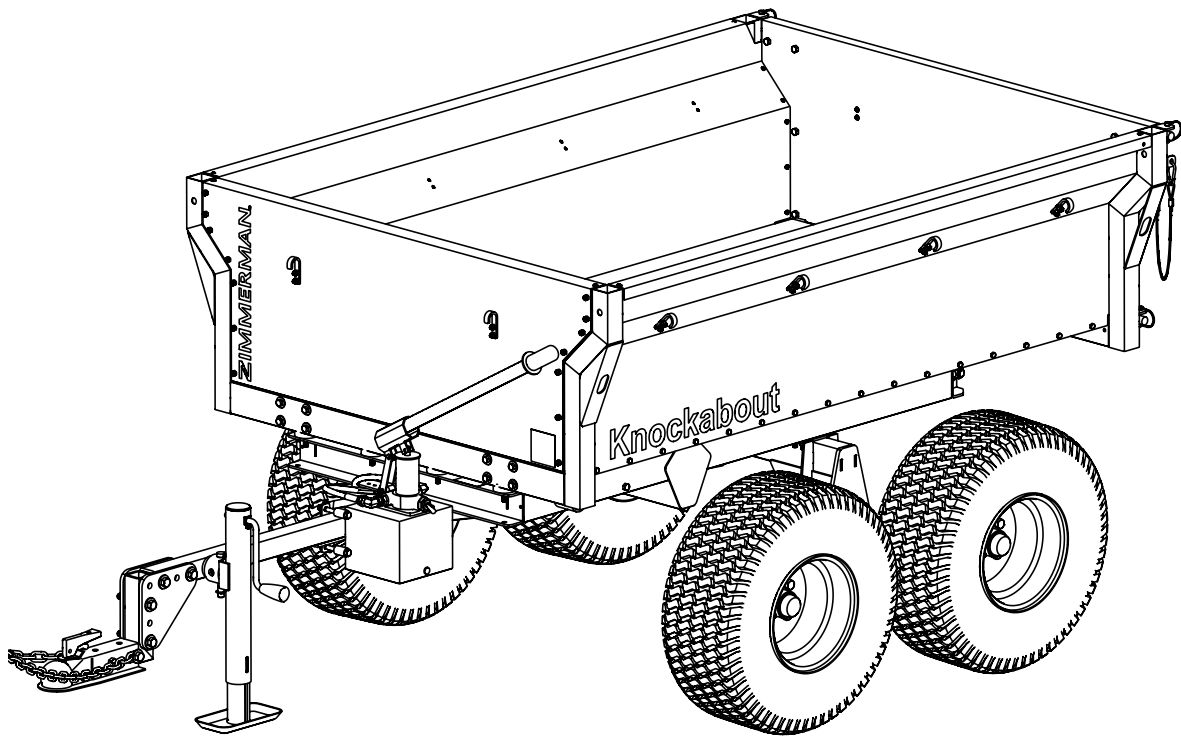


ZIMMERMAN™

Assembly Manual

Knockabout Trailer

Model: KT3300



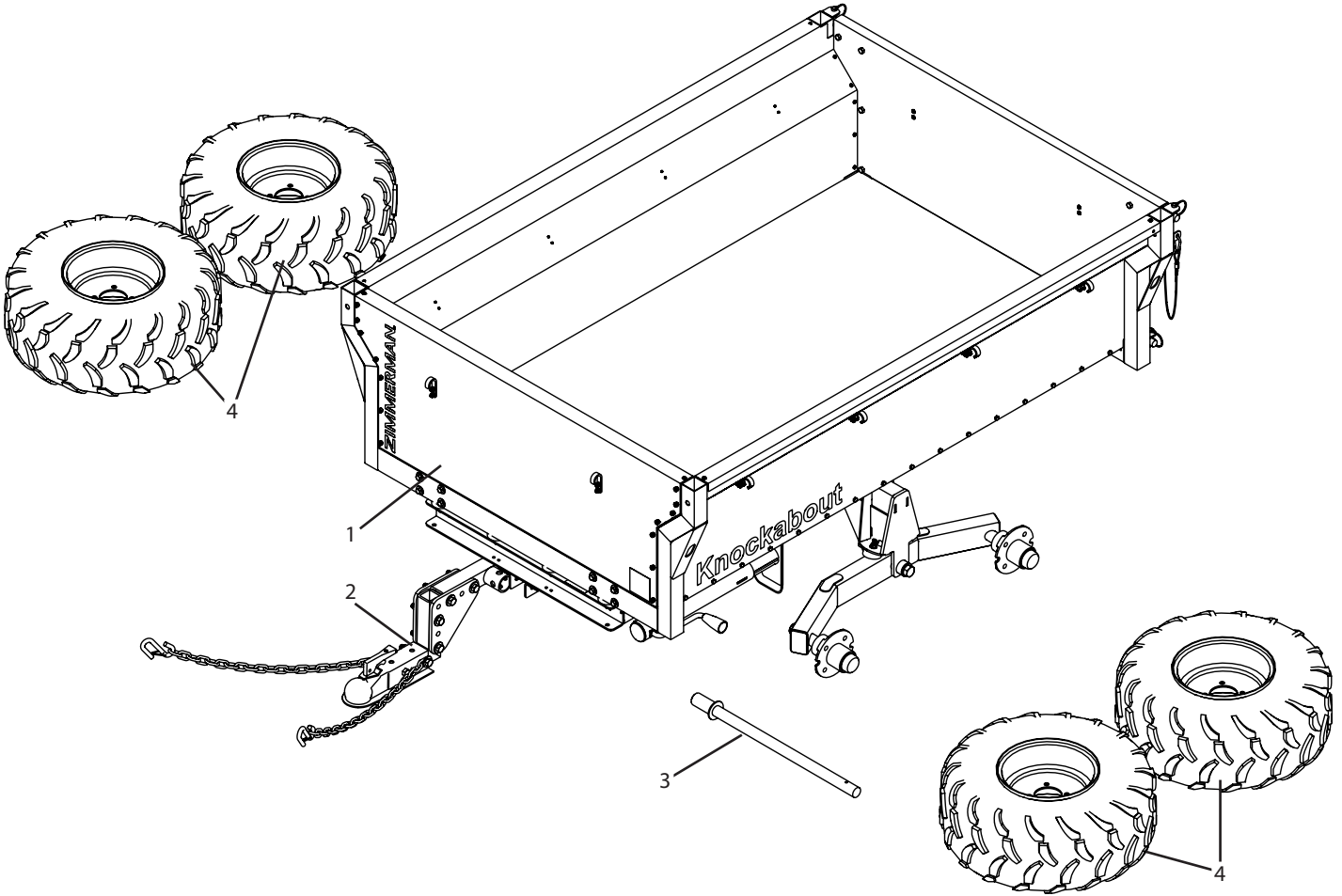
Manufactured by PBZ LLC
A Paul B Zimmerman Inc. Company
www.zimmermanequipment.com

Form: KT3300AM
Rev. A Date: 11/23

Assembly Instructions

Pallet Contents

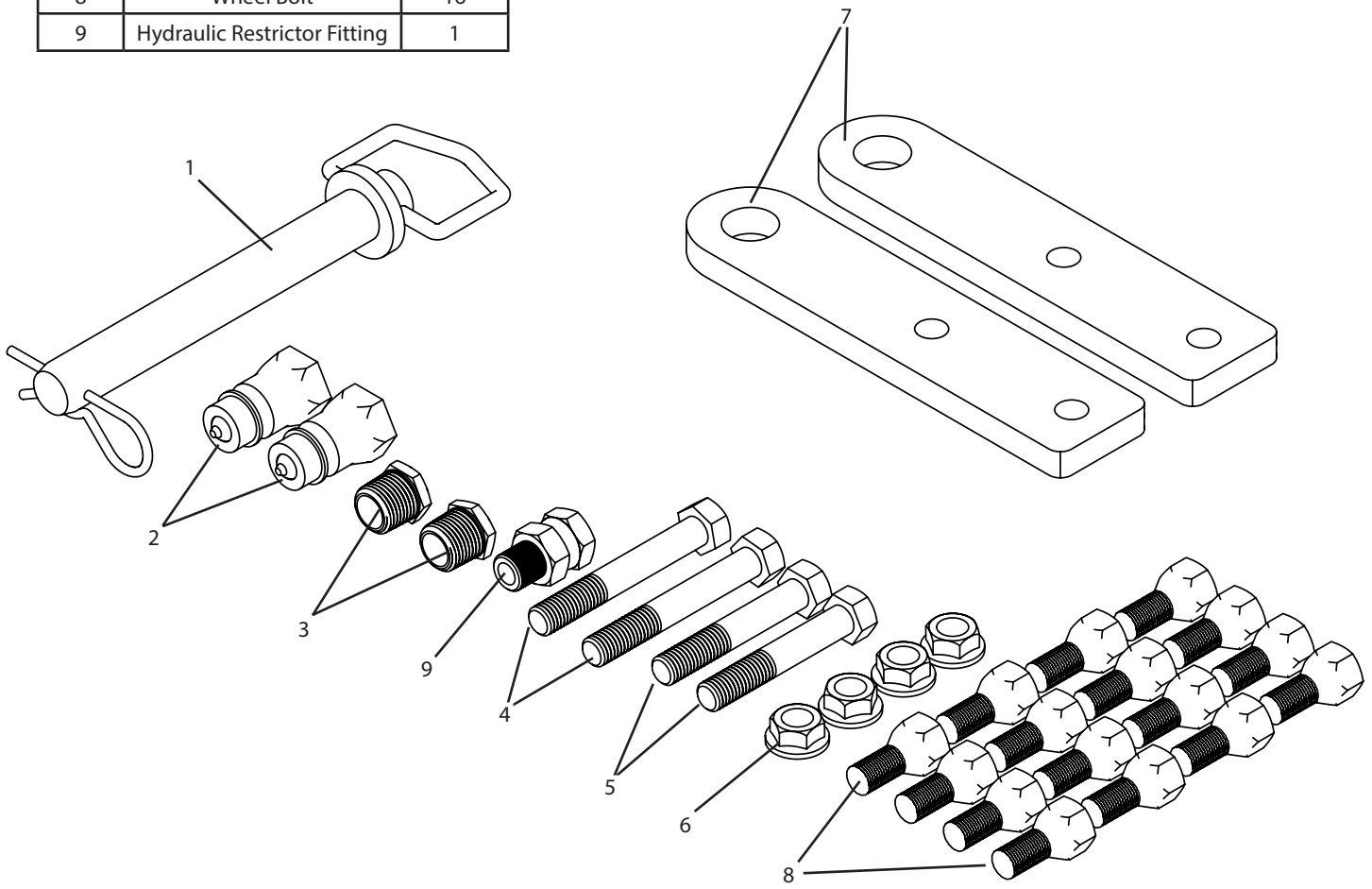
| Ref # | Description | Qty |
|-------|-----------------------|-----|
| 1 | Assembled Unit | 1 |
| 2 | Assembled Hitch | 1 |
| 3 | Hydraulic Pump Handle | 1 |
| 4 | Wheels | 2 |



Assembly Instructions

Hardware Bag Contents

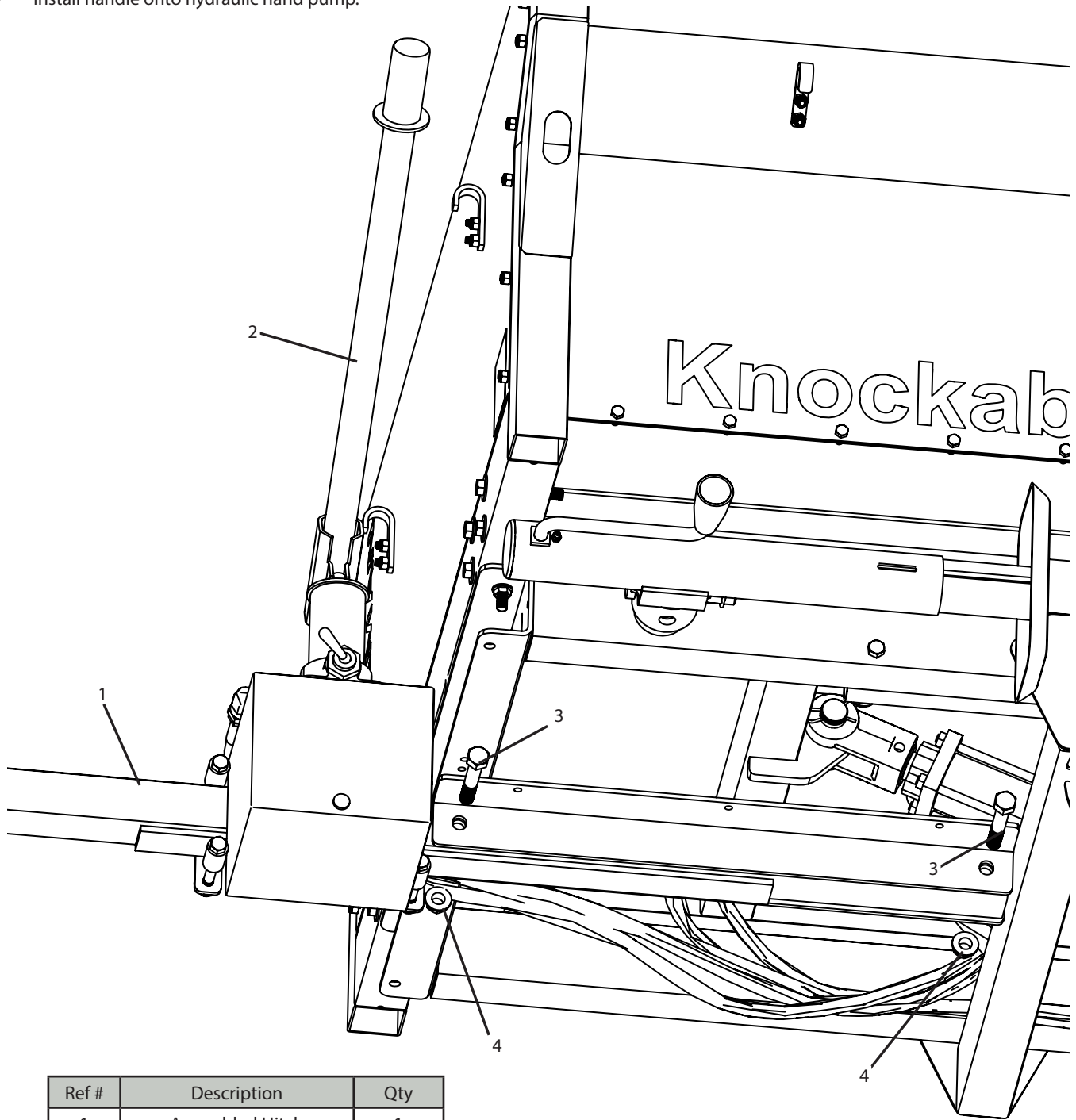
| Ref # | Description | Qty |
|-------|------------------------------|-----|
| 1 | Hitch Pin | 1 |
| 2 | Quick Disconnect Fitting | 2 |
| 3 | Reducer Bushing | 2 |
| 4 | Hex Bolt, 1/2-13 x 3 1/2" | 2 |
| 5 | Hex Bolt, 1/2-13 x 3" | 2 |
| 6 | Flange Nut, 1/2-13 | 4 |
| 7 | Hitch Plate | 2 |
| 8 | Wheel Bolt | 16 |
| 9 | Hydraulic Restrictor Fitting | 1 |



Assembly Instructions

Step 1

- Install Hitch Assembly onto frame. NOTE: Hitch height is adjustable to match height of hitch on the tow vehicle. See Owner's Manual Adjustments section for details.
- Install handle onto hydraulic hand pump.

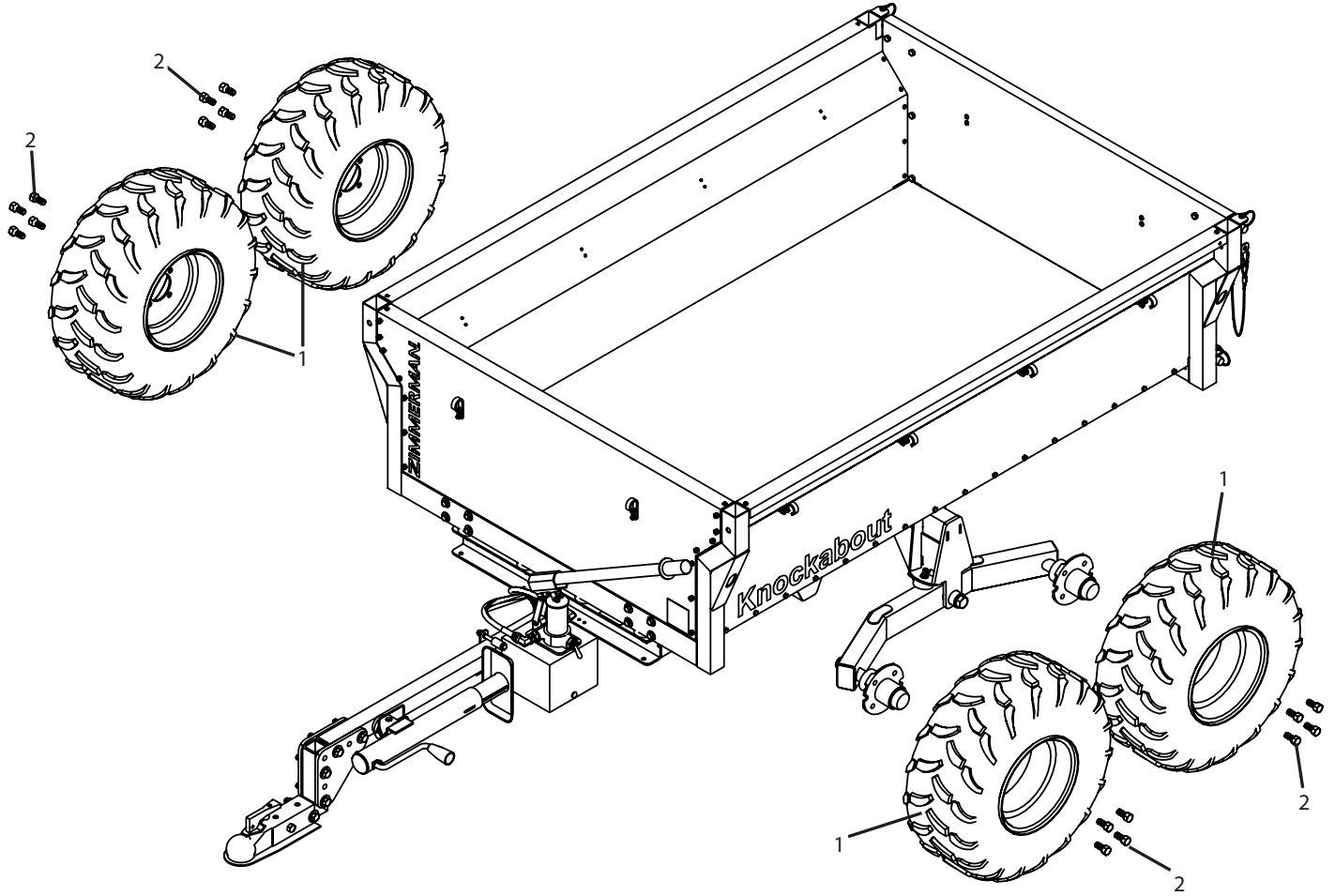


| Ref # | Description | Qty |
|-------|-----------------------|-----|
| 1 | Assembled Hitch | 1 |
| 2 | Hydraulic Pump Handle | 1 |
| 3 | Hex Bolt, 1/2-13 x 3" | 2 |
| 4 | Flange Nut, 1/2-13 | 2 |

Assembly Instructions

Step 2

- Install wheels onto unit.

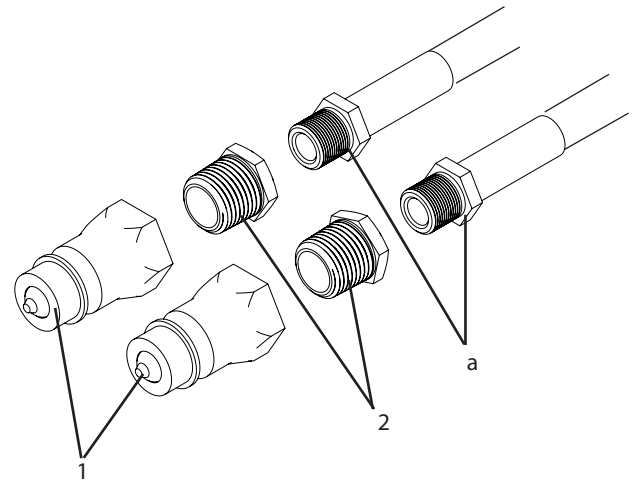
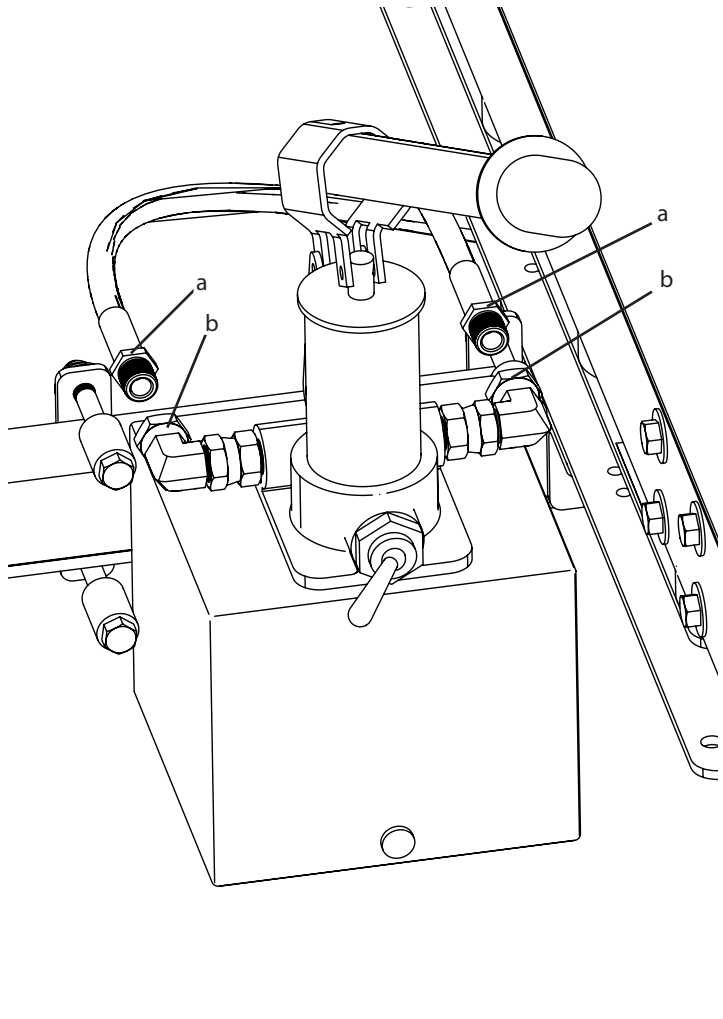


| Ref # | Description | Qty |
|-------|-------------|-----|
| 1 | Wheels | 2 |
| 2 | Wheel Bolt | 16 |

Assembly Instructions

Step 3a (Optional for Tow Vehicle Equipped with Hydraulic Remotes)

- Disconnect hydraulic lines (a) from the swivel fittings (b) on the hand pump.
- **WARNING:** Be careful not to get hydraulic fluid in any cuts or open wounds. If oil penetrates the skin and enters the bloodstream, the results could be fatal.
- Install reducer bushings and quick disconnect tips onto the ends of the hydraulic hoses. **NOTE:** Use sealant tape on threads of fittings.

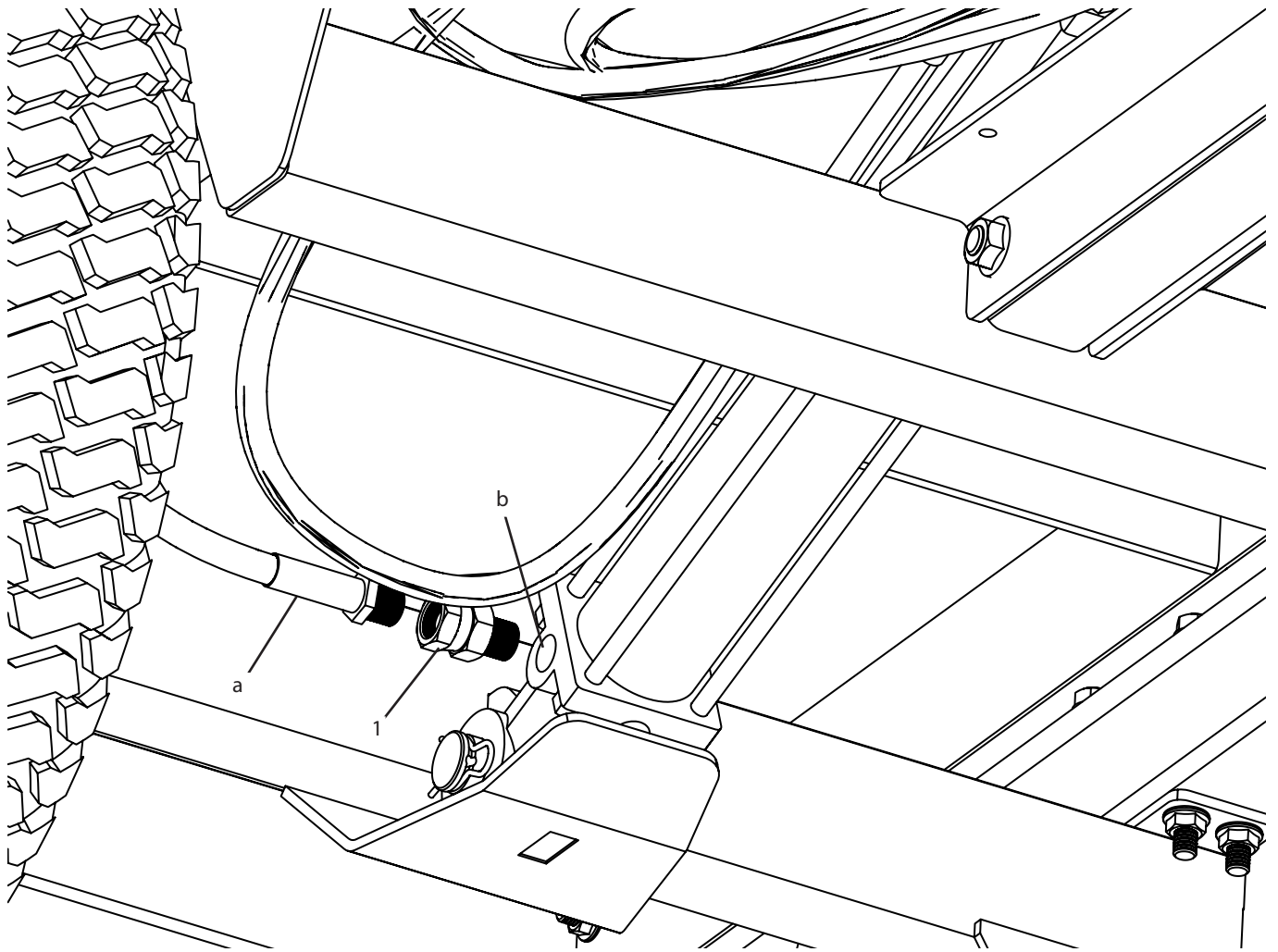


| Ref # | Description | Qty |
|-------|--------------------------|-----|
| 1 | Quick Disconnect Fitting | 2 |
| 2 | Reducer Bushing | 2 |

Assembly Instructions

Step 3b (Optional for Tow Vehicle Equipped with Hydraulic Remotes)

- Remove hydraulic line (a) from the lower port (b) on the lift cylinder.
- Remove hydraulic fitting from port on lift cylinder.
- **WARNING:** Be careful not to get hydraulic fluid in any cuts or open wounds. If oil penetrates the skin and enters the bloodstream, the results could be fatal.
- Install Hydraulic Restrictor Fitting (Item 1) into port on lift cylinder. **NOTE:** Use sealant tape on threads of fittings.
- Reinstall hydraulic line into restrictor fitting. **NOTE:** Use sealant tape on threads of fittings.

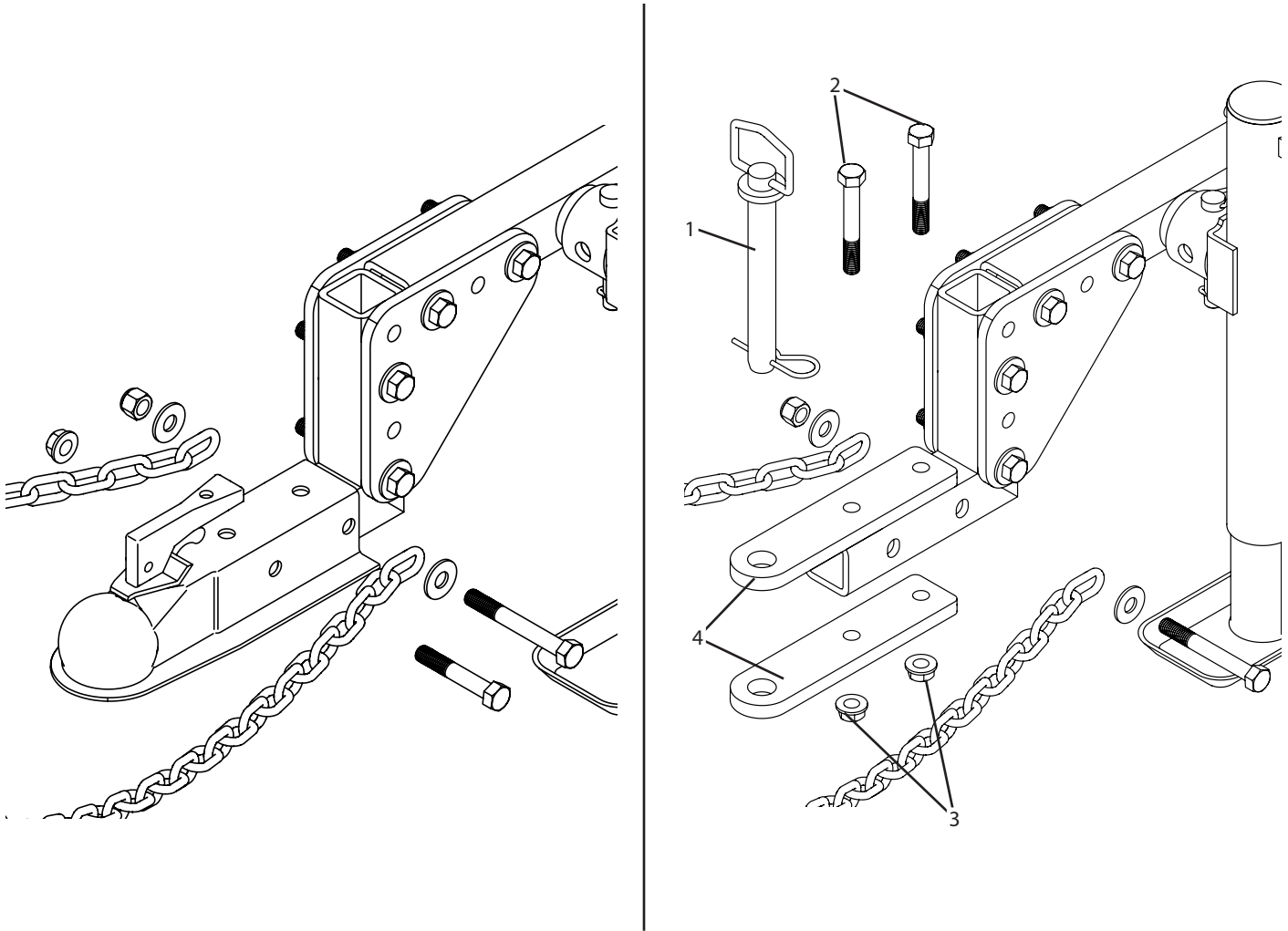


| Ref # | Description | Qty |
|-------|------------------------------|-----|
| 1 | Hydraulic Restrictor Fitting | 1 |

Assembly Instructions

Step 4 (Optional Clevis Style Hitch)

- Unbolt the ball coupler from the hitch.
- Install clevis hitch. NOTE: Reuse hardware from ball coupler to re-attach safety chains.
- NOTE: Hitch height can be changed to match height of tow vehicle. See Owner's Manual Adjustments section.



| Ref # | Description | Qty |
|-------|---------------------------|-----|
| 1 | Hitch Pin | 1 |
| 2 | Hex Bolt, 1/2-13 x 3 1/2" | 2 |
| 3 | Flange Nut, 1/2-13 | 2 |
| 4 | Hitch Plate | 2 |

ZIMMERMAN™

Manufactured by PBZ LLC
A Paul B Zimmerman Inc. Company
www.zimmermanequipment.com