



Owner's Manual

Drip Tape Applicator (Single & Dual Reel Units) Model# DT4610 and DT4620

Dealer: _____
Contact: _____
Phone: _____
Model #: _____
Serial #: _____

Manufactured by PBZ LLC
A Paul B Zimmerman Inc. Company
www.CropCareEquipment.com

Table Of Contents

Identification of Machine	2
Introduction	2
Safety	3-6
Safety Alert Symbol	3
Signal Words.....	3
Hazards.....	4
Preparation for Use	4
General Guidelines.....	4
During Use	5
Transporting the Equipment.....	5
Maintenance & Adjustment.....	5
After Use / Storage.....	5
Safety Signs	6
Operation	7-9
Operating Instructions	7-8
Pre-start Instructions.....	7-8
Load Drip Tape Roll	7
Set Drip Tape Guide Depth.....	8
During Operation	9
Troubleshooting	9
Maintenance & Adjustments.....	10-12
Maintenance Schedules.....	10
Maintenance Procedures.....	10
Maintenance Materials.....	11
Adjustments.....	11
Storage.....	12
Specifications.....	12
Transportation.....	12
CropCare® Limited Warranty	13
Warranty Coverage	13
Warranty is Void if.....	13
Getting Warranty Service.....	13
Ordering Parts.....	13
Parts List & Breakdowns.....	13

Identification of Machine

- Model# DT4610

Introduction

Please read and understand this manual and its instructions and warnings completely before operating equipment.

- The Drip Tape Applicator is intended to be installed as an attachment on equipment, and is to be used to install drip tape for irrigation (see the General Specifications section for Drip Tape and Roll sizes intended for use with this attachment).
- Read and understand the manufacturer's labels, warnings, and instructions.
- Familiarize yourself and other operators with all components of the machine and how they are operated.
- Contact your authorized CropCare® Dealer for help interpreting the owners manual.

Safety Alert Symbol

-The safety alert symbol for safety signs & decals that contain one of the three signal words (DANGER, WARNING, & CAUTION) will appear as shown in figure 1.



Figure 1: Safety Alert Symbol

Signal Words

-There are three signal words; DANGER, WARNING, and CAUTION. The signal words bring attention to the existence and relative seriousness of a hazard.

- **DANGER:** The signal word DANGER indicates an imminently hazardous situation which, if not avoided, will result in death or serious injury.
- **WARNING:** The signal word WARNING indicates a potentially hazardous situation which, if not avoided, could result in death or serious injury.
- **CAUTION:** The signal word CAUTION indicates a potentially hazardous situation which, if not avoided, may result in minor or moderate injury.

-Additional Signal Words.

- **NOTE:** The signal word NOTE provides information on operator safety and operator tips.
- **IMPORTANT:** The signal word IMPORTANT indicates a recommended action or a restriction that will ensure correct equipment operation and performance.

Hazards

Preparation for Use

1.) General Guidelines

Every year many unnecessary accidents occur due to improper equipment handling and a disregard for safety precautions. As the operator you can avoid accidents by observing the precautions in this section.

- The best defense against accidents is a careful and responsible operator.
- The operator should be a responsible adult. Do not allow persons to operate this equipment until they have displayed a thorough understanding of equipment safety precautions and operational use!
- Never attempt to operate this equipment when under the influence of alcohol or drugs.
- ALL replacement parts need to be an OEM part or an aftermarket equivalent.
- If there is any portion of this manual that you do not fully understand, please contact the original retailer.

2.) Preparation for Use

- Be aware of the location of all the safety and warning decals. Always replace any decals that are illegible or are missing.
- Carefully study and understand this owner's manual.
- Be aware of the owner's manual decal (Figure 1).
- Do not wear loose-fitting clothing which may catch in moving parts.
- Visually inspect the equipment for any worn parts, loose bolts, or other visible problems, and make the necessary repairs.
- All equipment maintenance should be performed with the equipment unhooked from the tractor.
- Make sure the area is clear of any people or obstructions before using the equipment.

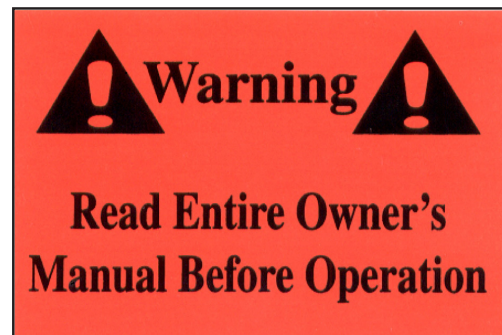


Figure 1: Owner's Manual Decal (DE39)



Figure 2: Read Owner's Manual (DE115)

Safety



During Use



- Always be aware of bystanders, particularly children! Always look before moving the equipment. Bystanders should never be allowed near the equipment during operation.
 - No passengers are allowed on or in the tractor or equipment, to which this attachment is installed, at any time.
 - Be aware of the equipment's moving parts and the portions of the equipment where the risk of pinching is high.
 - Be aware of all the safety and warning decals.
 - Keep hands and body parts clear of all moving parts.
 - Only disconnect equipment, to which this attachment is installed, on a solid level surface.
 - When operating on inclines, it is especially important that your tractor is equipped with Roll Over Protection System (ROPS).
 - Remember that accidents can even happen to seasoned operators. Always take your time and follow all safety instructions.
-



Transporting the Equipment



- When transporting the equipment on public roads, always follow state and local regulations regarding safety and transportation requirements. Use the necessary lights and slow moving vehicle (SMV) emblems.
 - Never exceed the tractor's tow ratings with the equipment, to which this attachment is installed.
 - Check lighting before traveling.
 - Make sure SMV sign is not blocked or bent.
-



Maintenance and Adjustment



- Make sure equipment that this attachment is installed on is lowered onto level ground, or adequately supported before performing adjustments and maintenance.
-



After Use / Storage



- Following operation, stop the tractor unit, set the brakes, shut off the engine, and remove the ignition key.
 - Park the equipment, to which this attachment is installed, on a hard level surface, away from all human and livestock activity.
 - Do not permit children to play on or around equipment.
-

Safety Signs

Signs and decals used to indicate safe practices while preparing, transporting, and operating equipment, to which this attachment is installed.

- Make sure that they are not obstructed by dirt. Clean as necessary.
- Replacements can be ordered from a CropCare® Dealer

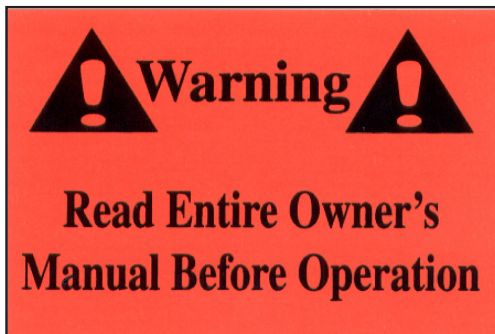


Figure 1: Owner's Manual Decal (DE39)



Figure 2: Read Owner's Manual (DE115)

Operation

Operating Instructions

Before operating this attachment, it is important that you read this entire manual and know all safety precautions. Always take your time and be alert when operating your equipment with this attachment. This will allow you to safely operate without accident or interruption.

Pre-start Instructions

1.) Load the Drip Tape Roll

1. Load the drip tape roll as indicated in Figure 1 below. NOTE: If using used tape, make sure that it is as clean and water free as possible. Debris and water will unbalance the roll as it rotates, potentially causing poor performance.
2. Rout the drip tape around the rollers as shown in Figure 2.
3. Rout the drip tape through the Drip Tape Guide Tube (Figure 1).

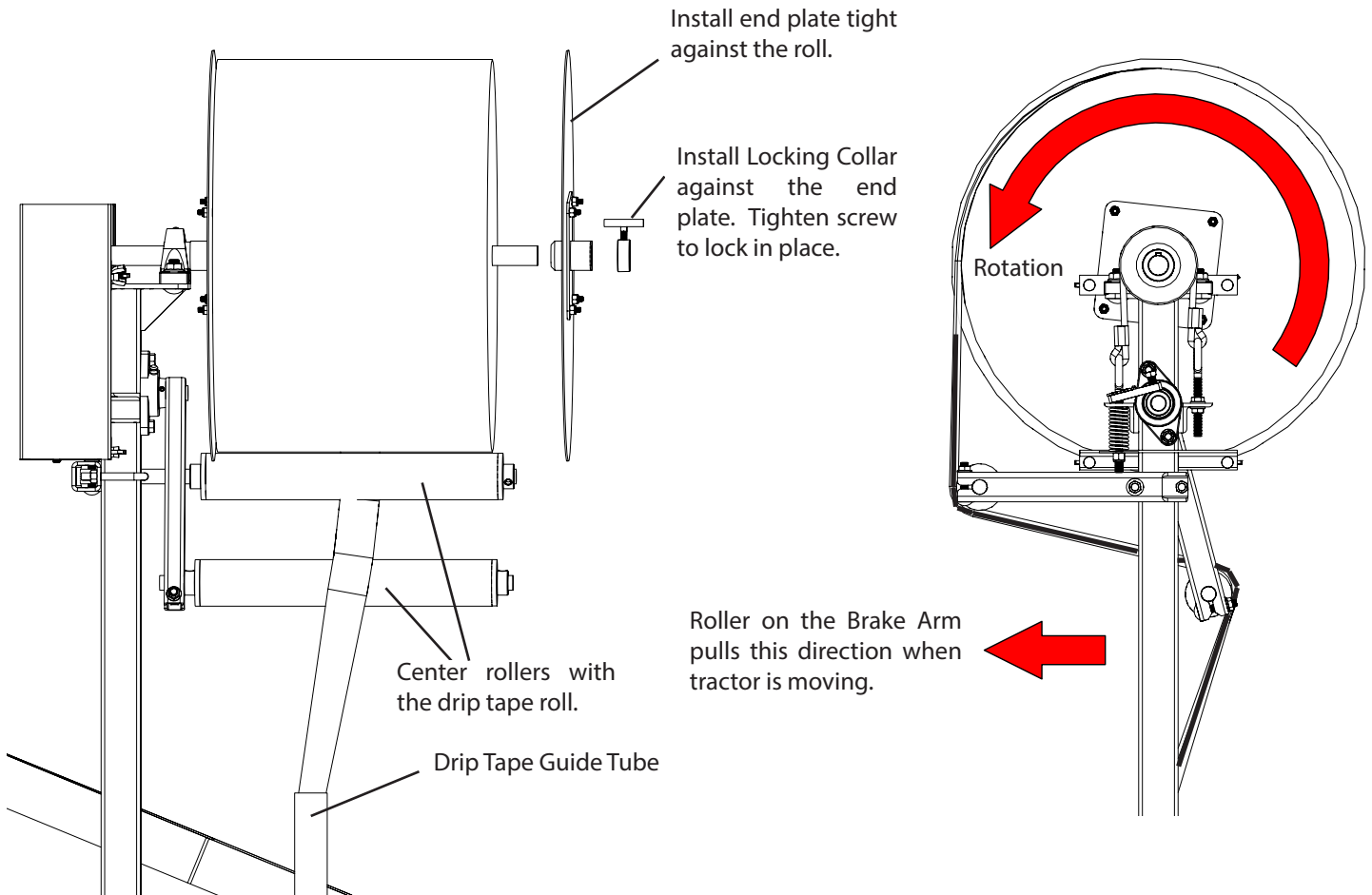


Figure 1: Install Drip Tape Roll

Figure 2: Drip Tap Routing

Operation

2.) Set the Drip Tape Guide Depth

- Set the depth of the Drip Tape Guide Tube.
- If the drip tape is to be buried, set the depth so that the top of the outlet is approximately 1" -2" below the bed top, maximum of 4". **IMPORTANT:** The Drip Tape Guide must only be used in loose tilled soil.
- If the drip tape is to be installed on the surface, set the Drip Tape Guide above the ground level.

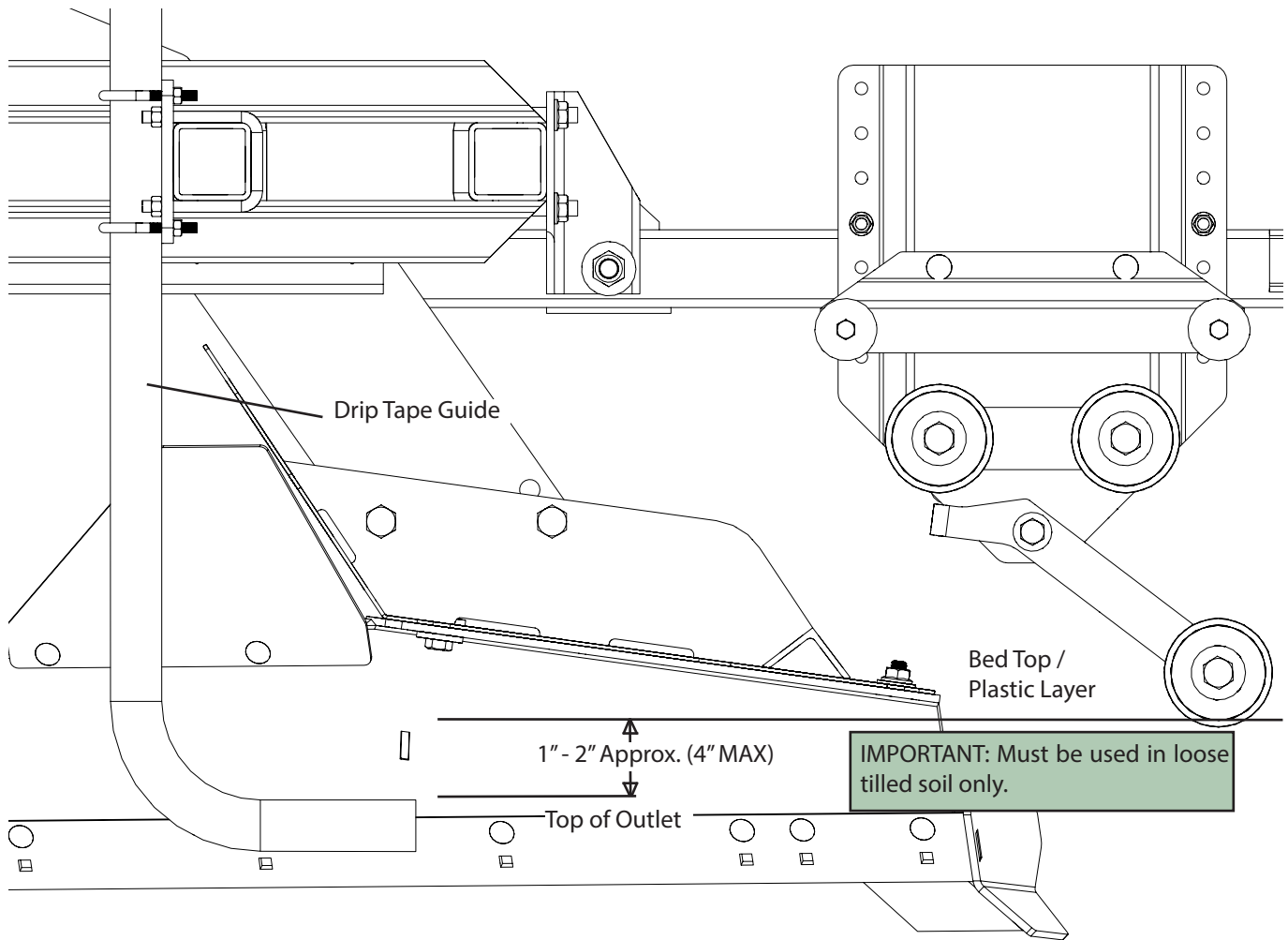


Figure 3: Drip Tape Guide Depth

Operation

During Operation

- Starting at the beginning of the row, secure the end of the drip tape that has been fed through the Drip Tape Guide.
- Proceed down the row.
- Keep an eye on the drip tape being fed through the rollers, it should have enough tension on it so that changes in driving speeds will not cause the drip tape roll to unravel. Adjust the tension on the Brake Belt if needed (see Adjustments).
- At the end of the row, cut the drip tape off.

Troubleshooting

-Information for fault diagnosis and remedy of problems in operation.

Issue	Probable Cause	Solution
Drip tape tears.	Drip Tape Guide has sharp edges worn into it from use.	Grind or sand down sharp edges if possible, or replace part.
Drip tape roll unrolls too quickly.	There is not enough tension on the Brake Belt	Adjust the spring tensioner for the Brake Belt (see Adjustments).

Maintenance and Adjustments

Maintenance Schedules

-Information concerning periodic maintenance tasks and the recommended frequency.

Frequency	Maintenance Tasks
Every Use	Check for broken or stressed parts.
	Check for loose connections (hardware).
	Grease pillow block bearings on spool shaft and brake arm shaft.
	Adjust Brake Spring tension if needed. (See Adjustments.)
Every Season	Check condition of drip tape guide.
	Paint or grease metal surfaces that have been worn by use to prevent corrosion.

Maintenance Procedures

-Instructions for each task, including identification of any tools, test equipment, replacement parts or other service required.

Every Use

- Perform a visual and physical inspection for any worn parts, loose bolts, or other visible problems. Make all necessary repairs before operating equipment. To order parts or receive technical help, please contact your local CropCare® dealer.
- Grease Spool Shaft and Brake Arm Shaft pillow block bearings with General-purpose lithium grease.
- Adjust Brake Spring tension if needed. The Brake Belt wears over time, so adjustment may be needed (see Adjustments).

Every Season

- Check the condition of the Drip Tape Guide for wear. Make sure there are no sharp edges that may damage the drip tape during installation.
- Paint or grease worn metal surfaces of worn parts to prevent or reduce corrosion.

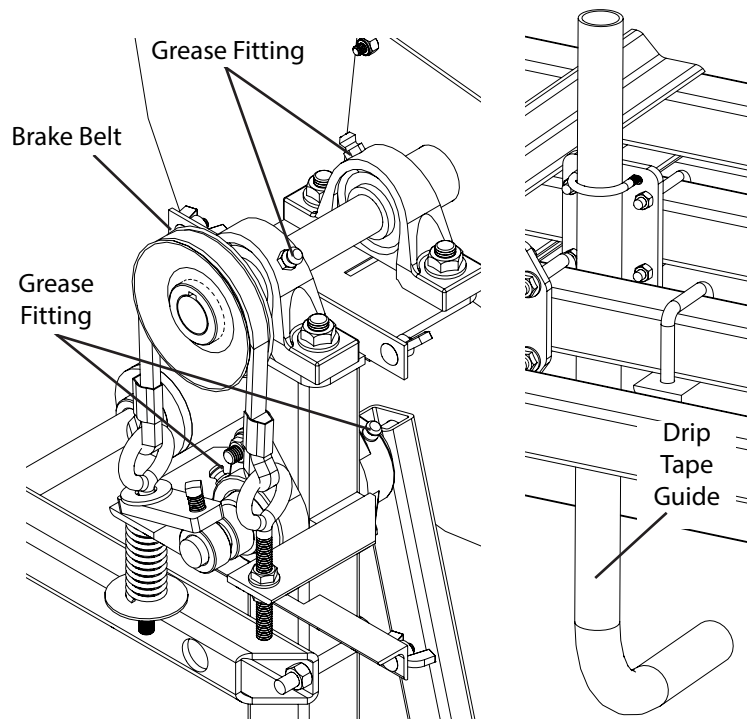


Figure : Bearings and Drip Tape Guide

Maintenance and Adjustments

Maintenance Materials

Specifications, including quantities / capabilities for normal maintenance materials, such as:

- General-purpose lithium grease.
- Paint

Adjustments

Information concerning adjustments required to adapt the machine to different tasks or operating conditions.

- Adjust the brake belt tension as indicated in the figure below.

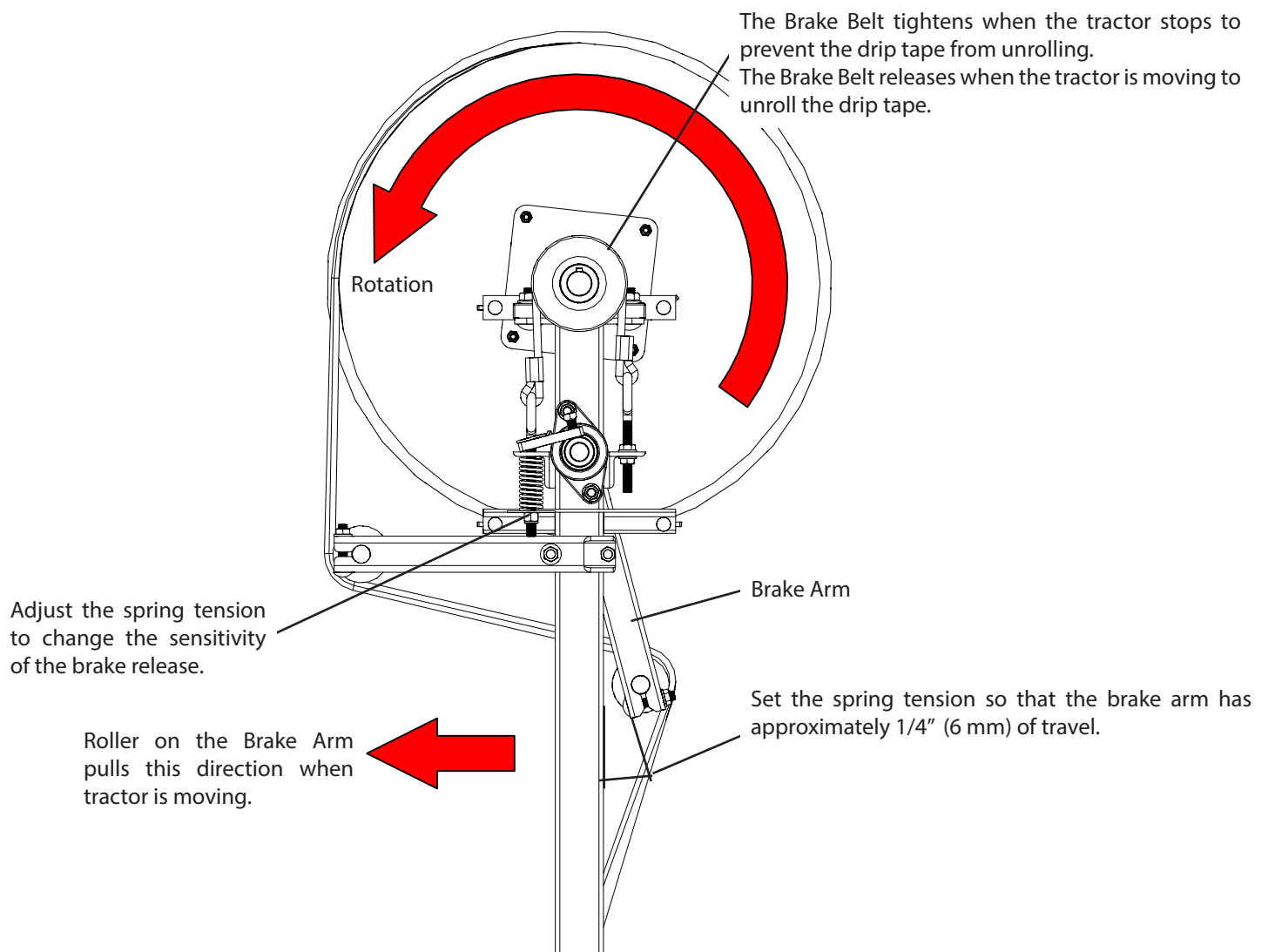


Figure : Brake Adjustment

Maintenance and Adjustments

Storage

- Park the equipment, to which this attachment is installed, on a hard level surface, away from all human and livestock activity.
- Do not permit children to play on or around equipment, on which this attachment is installed.

Specifications

General Specifications

Max. Drip Tape Roll Diameter:	20"
Max. Drip Tape Roll Width:	12"
Max. Drip Tape Dia:	7/8"
Max. Depth of Drip Tape:	4" (Loose soil only)
Weights (Approx.) (Does not include Drip Tape Rolls):	
DT4610 (Single Reel):	85 lbs.
DT4620 (Dual Reel):	170 lbs.

Transportation



Transporting the Equipment



- When transporting the equipment, on which this attachment is installed, on public roads, always follow state and local regulations regarding safety and transportation requirements. Use the necessary lights and slow moving vehicle (SMV) emblems.
- Never exceed the tractor's tow ratings, on the equipment to which this attachment is installed.
- Check lighting before traveling.
- Make sure SMV sign is not blocked or bent.

CropCare® Limited Warranty

Warranty Coverage

CropCare® hereby provides a Limited Two (2) Year Warranty on the Products manufactured by CropCare® that such Products shall be free from manufacturer's defects in any of the Product's components in the 24 month period following the original date of purchase from the authorized dealer (the "Warranty Period"). CROPCARE® HEREBY EXCLUDES AND DISCLAIMS ANY AND ALL OTHER WARRANTIES, STATUTORY, EXPRESS OR IMPLIED, INCLUDING WITHOUT LIMITATION ANY IMPLIED WARRANTY OF MERCHANTABILITY OR FITNESS FOR ANY PARTICULAR PURPOSE AND ANY WARRANTY ARISING FROM USAGE OF TRADE OR COURSE OF DEALING. Defective components will be repaired or replaced at the discretion of the manufacturer. It is the responsibility of the purchaser to return warranted components to the manufacturer. This Product Warranty is limited to the repair or replacement of Product components only. CROPCARE® IS NOT TO BE HELD LIABLE FOR INCIDENTAL OR CONSEQUENTIAL DAMAGES OF ANY KIND. This Product Warranty covers the purchaser of this Product and any other owners who own it during Warranty Period.

To retain the Product Warranty, the Product must be operated and maintained as set forth by its owner's manual. For warranty service, please have a copy of the purchase invoice available.

Warranty is Void if:

1. The Product has been subjected to, in the opinion of CropCare®, negligent handling, misuse, an accident or if the instructions in the owner's manual were not completely followed.
2. The Product's components have been altered in any manner or repairs have taken place with unapproved parts.

Getting Warranty Service

All Product Warranty claims must be made through an authorized CropCare® dealer. All warranty claims must be submitted with an invoice or a proof of purchase that denotes the purchase date and place of purchase. If you have any questions or comments concerning this warranty, please contact an authorized CropCare® dealer.

Ordering Parts

Please contact your authorized CropCare® dealer to order replacement parts for your product.

Parts Lists & Breakdowns

- Parts Lists and Breakdowns are available on www.CropCareEquipment.com/equipment-build-lists.php.
- Parts Lists and Breakdowns can also be acquired through a dealer.

CROPCARE

by PBZ[®]

Manufactured by PBZ LLC
A Paul B Zimmerman Inc. Company
www.CropCareEquipment.com