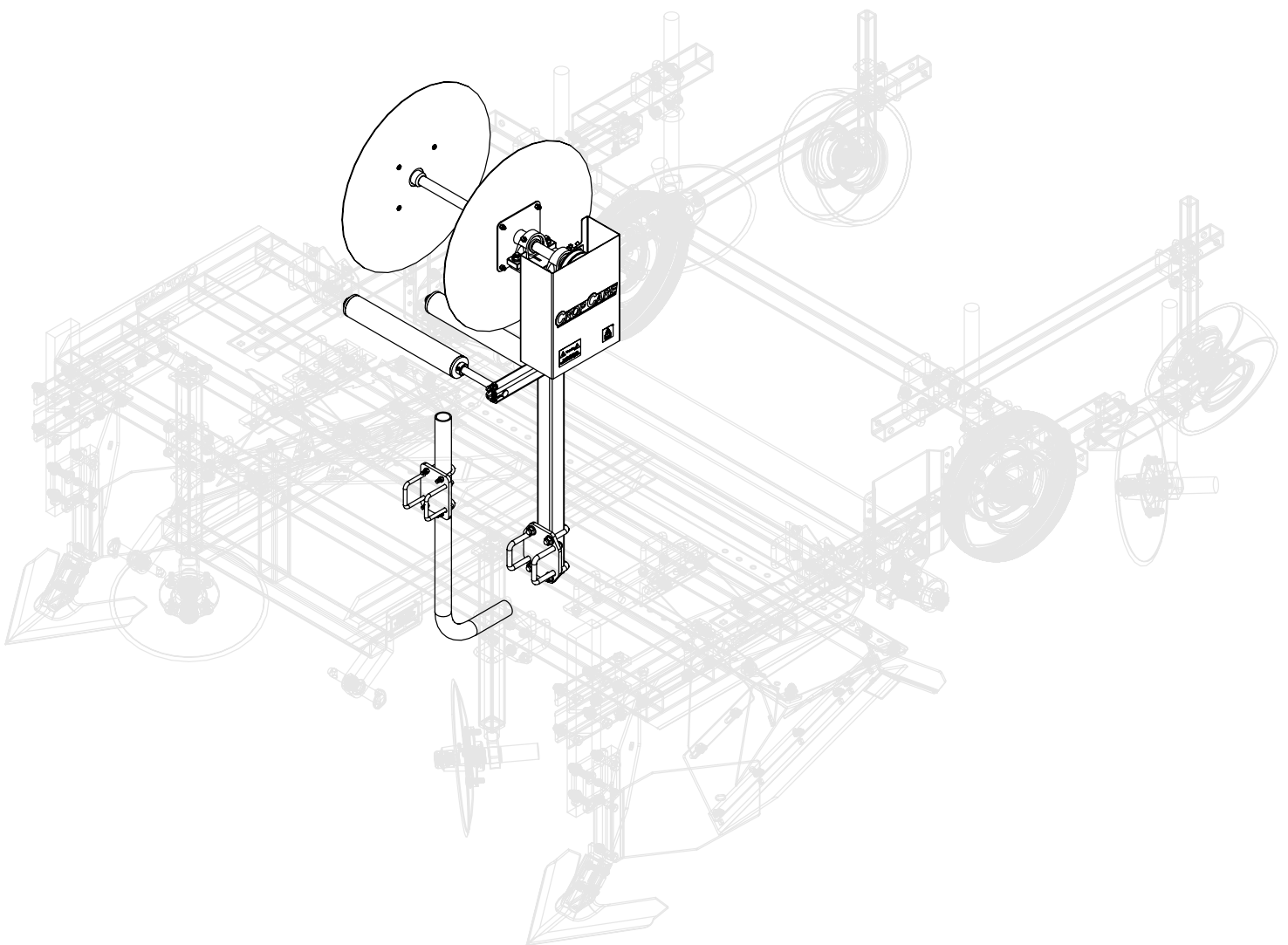




# Parts breakdown

Drip Tape Applicator  
Model: DT4610 & DT4620

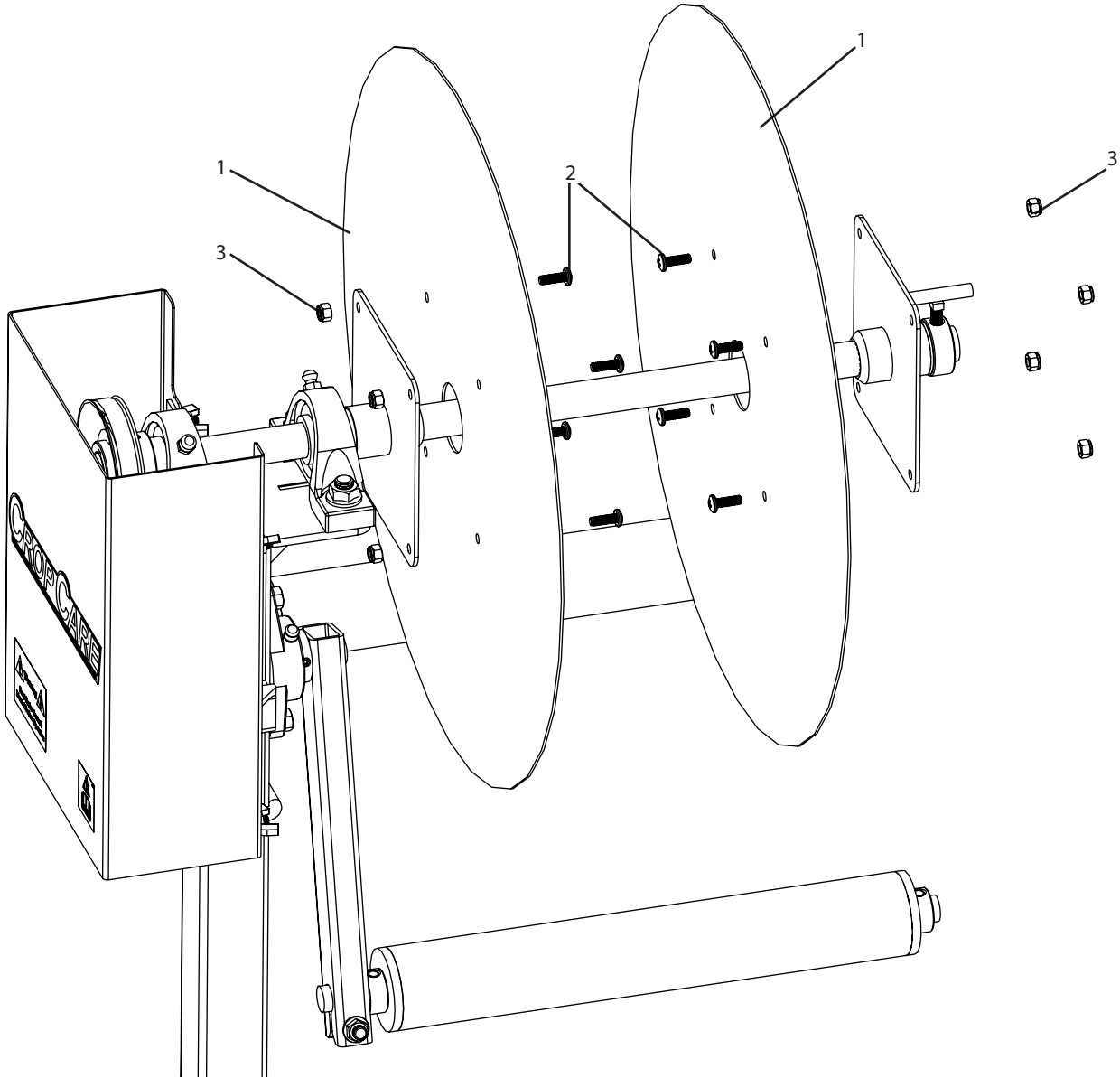


Manufactured by PBZ LLC  
A Paul B Zimmerman Inc. Company  
[www.CropCareEquipment.com](http://www.CropCareEquipment.com)

Form: DT4610\_DT4620 PD  
Rev. A Date 5/21

# DT4610 & DT4620 Parts Breakdown

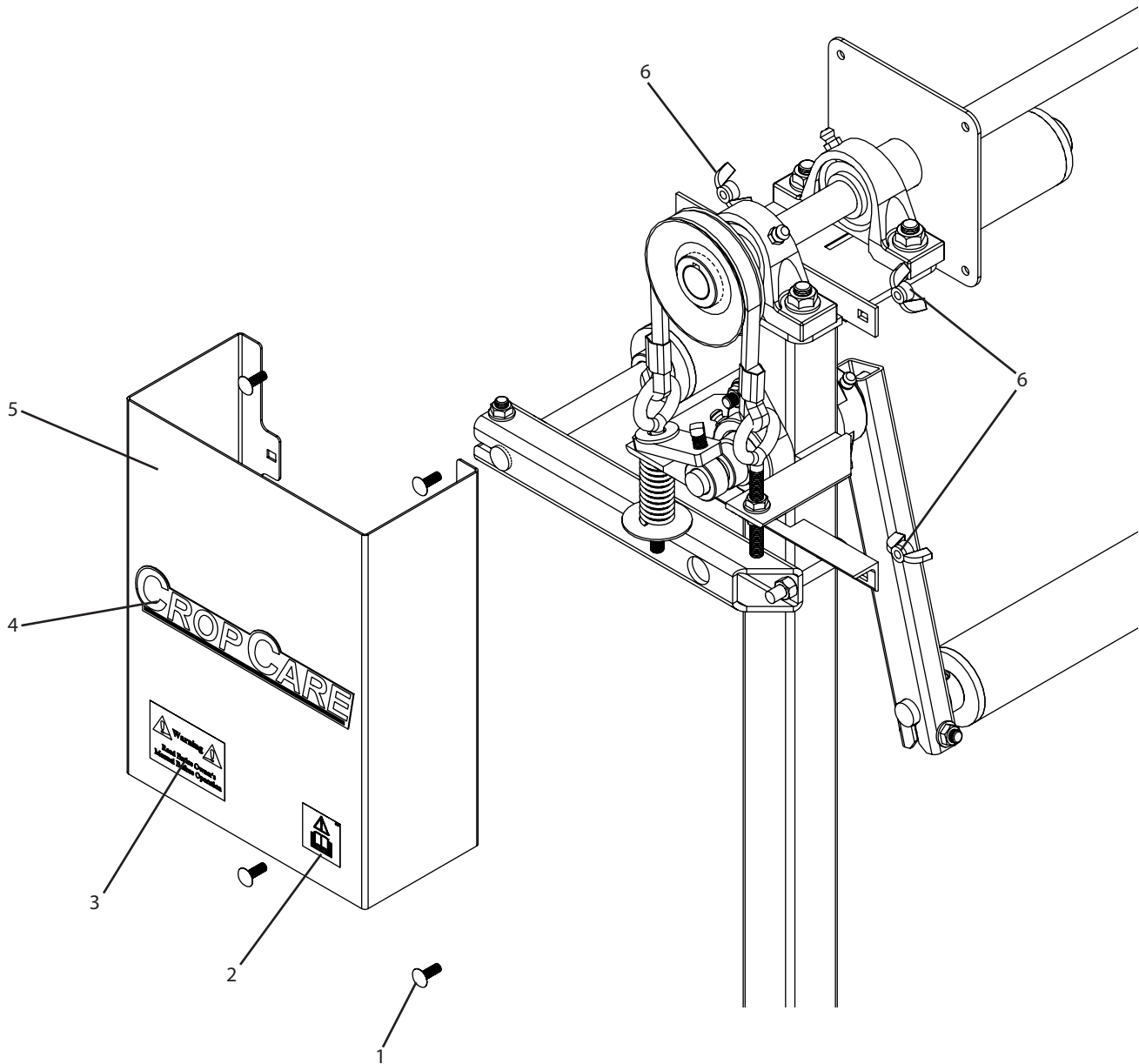
## Drip Tape Reel End Caps



Ref#	Qty.	Part Number	Description
1	2	DTA112	Drip Tape Applicator, Roll Cap, 21in dia
2	8	MR14X34	Machine Screw Combo 1/4-20 x 3/4
3	8	NNC14	Nut, Lock Nylon 1/4-20

# DT4610 & DT4620 Parts Breakdown

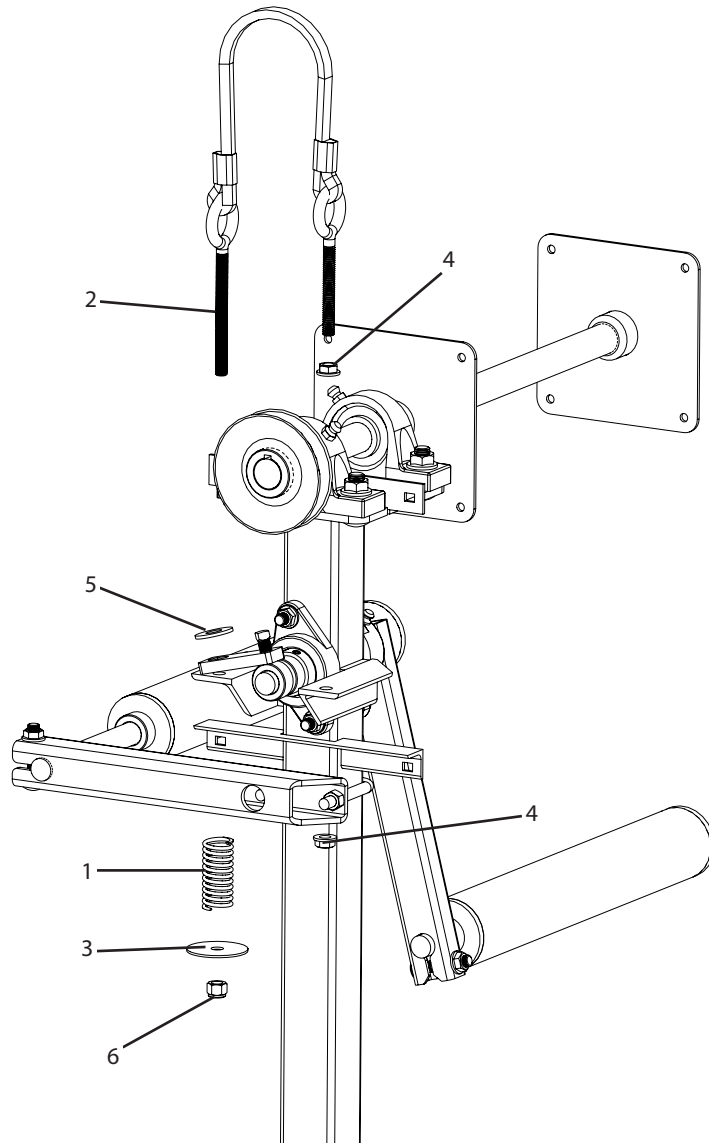
## Cover



Ref #	Qty.	Part Number	Description
1	4	CB14*34	Bolt, Carriage 1/4-20 x 3/4" Gr 2
2	1	DE115	Decal, Read Owners Manual
3	1	DE39	Decal, "Warning Read Owner's Manual"
4	1	DE46	Decal, CropCare Logo 1.9" x 8.8"
5	1	DTA114	Drip Tape Applicator, Brake Cover
6	4	WN14	Nut, Wing 1/4-20

# DT4610 & DT4620 Parts Breakdown

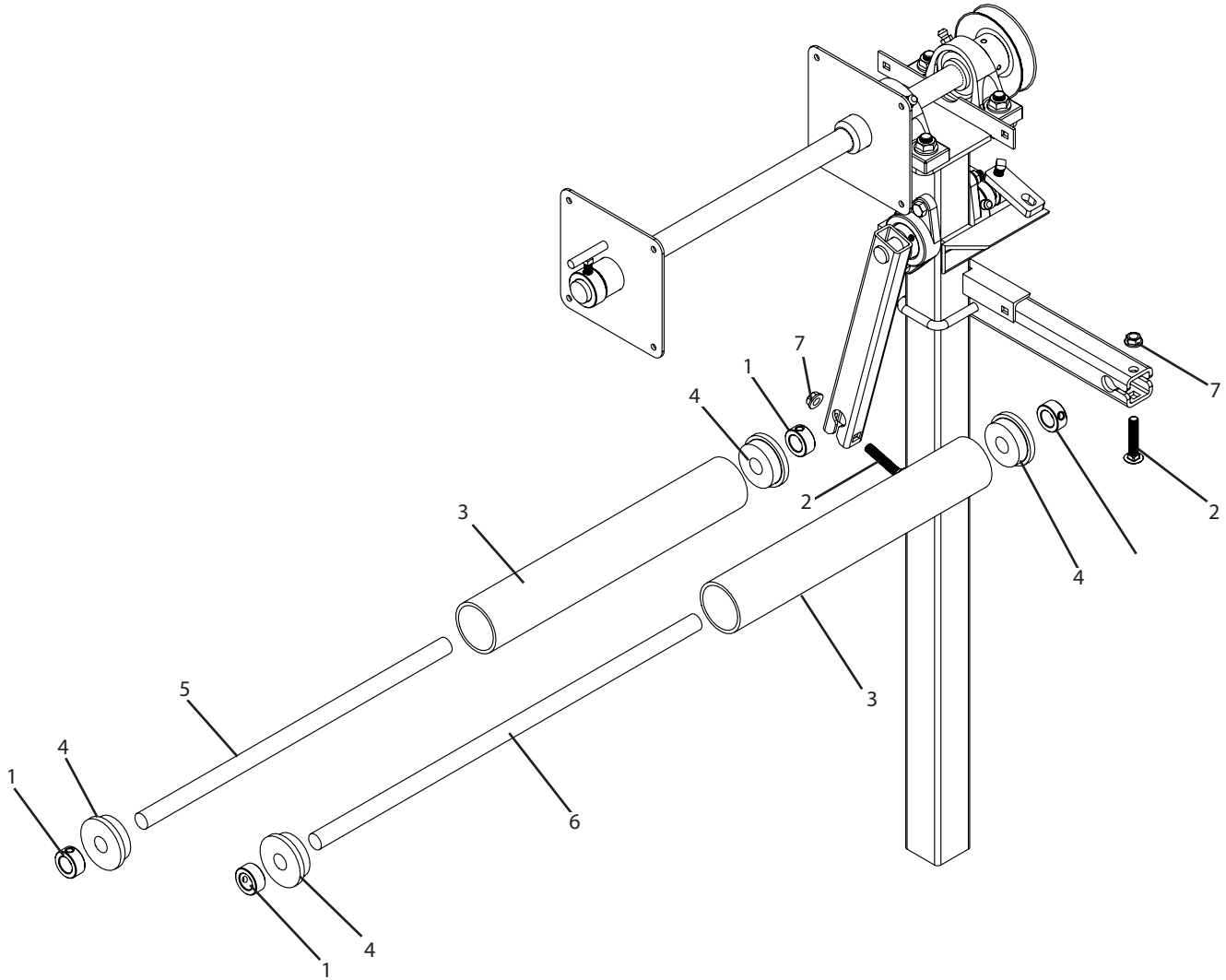
## Brake Belt



Ref #	Qty.	Part Number	Description
1	1	57	Spring, Compression, 1in OD x 3in long, .12 Wire, Zinc
2	1	DTA115	Drip Tape Applicator, Brake / Tensioner Belt
3	1	FDW38*2	Washer, Fender 3/8" ID x 2" OD
4	2	FN38	Nut, Flange 3/8-16
5	1	FW12	Washer, Flat 1/2" USS
6	1	NNC38	Nut, Lock Nylon 3/8-16

# DT4610 & DT4620 Parts Breakdown

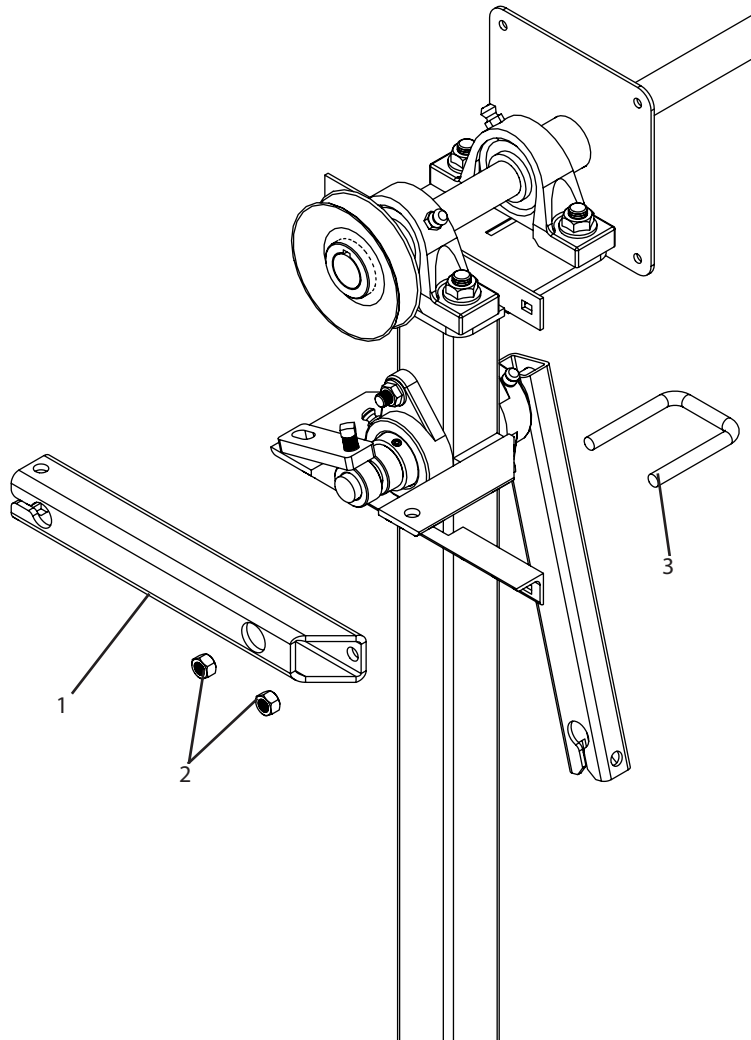
## Rollers



Ref #	Qty.	Part Number	Description
1	4	0750P	Shaft Collar, 3/4"
2	2	CB38*2G5	Bolt, Carriage 3/8-16 x 2" Gr 5
3	2	DTA106	Drip Tape Applicator, Roller
4	4	DTA107	Drip Tape Applicator, Roller End Cap
5	1	DTA108	Drip Tape Applicator, Roller Rod
6	1	DTA109	Drip Tape Applicator, Roller Rod
7	6	FN38	Nut, Flange 3/8-16

# DT4610 & DT4620 Parts Breakdown

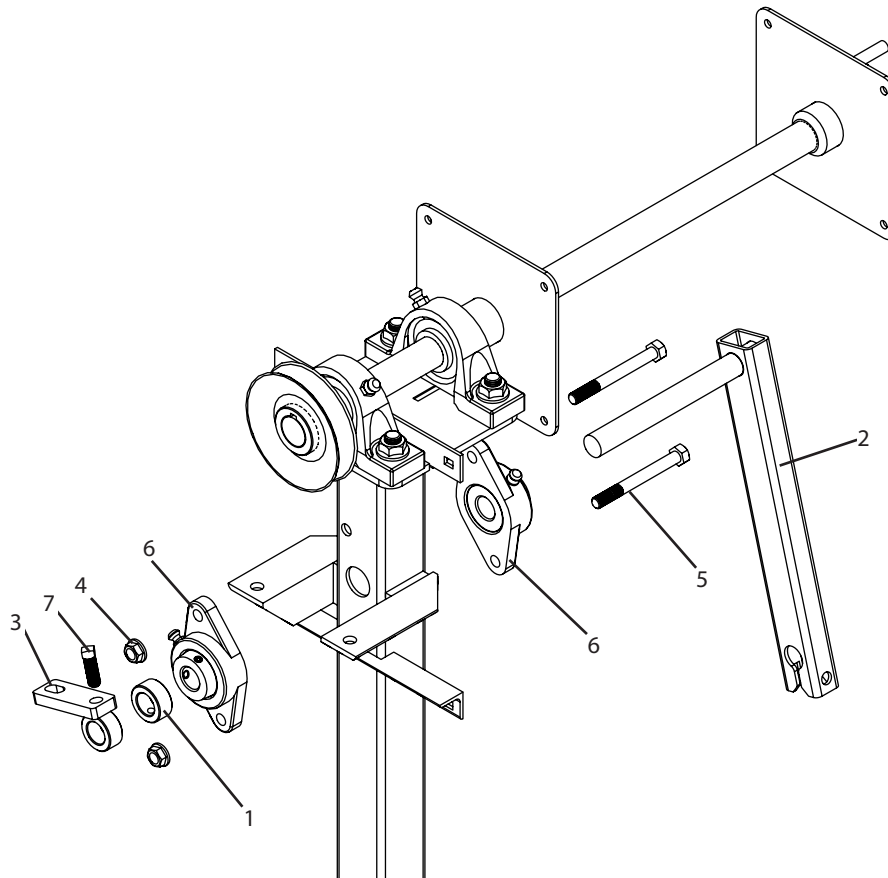
## Fixed Roller Arm



Ref #	Qty.	Part Number	Description
1	1	DTA103	Drip Tape Applicator, Fixed Arm
2	2	NC38	Nut, Hex 3/8-16
3	1	UBSQ06X02X03	U-bolt, Square, 3/8-16 x 2" ID width x 3" ID length, zinc

# DT4610 & DT4620 Parts Breakdown

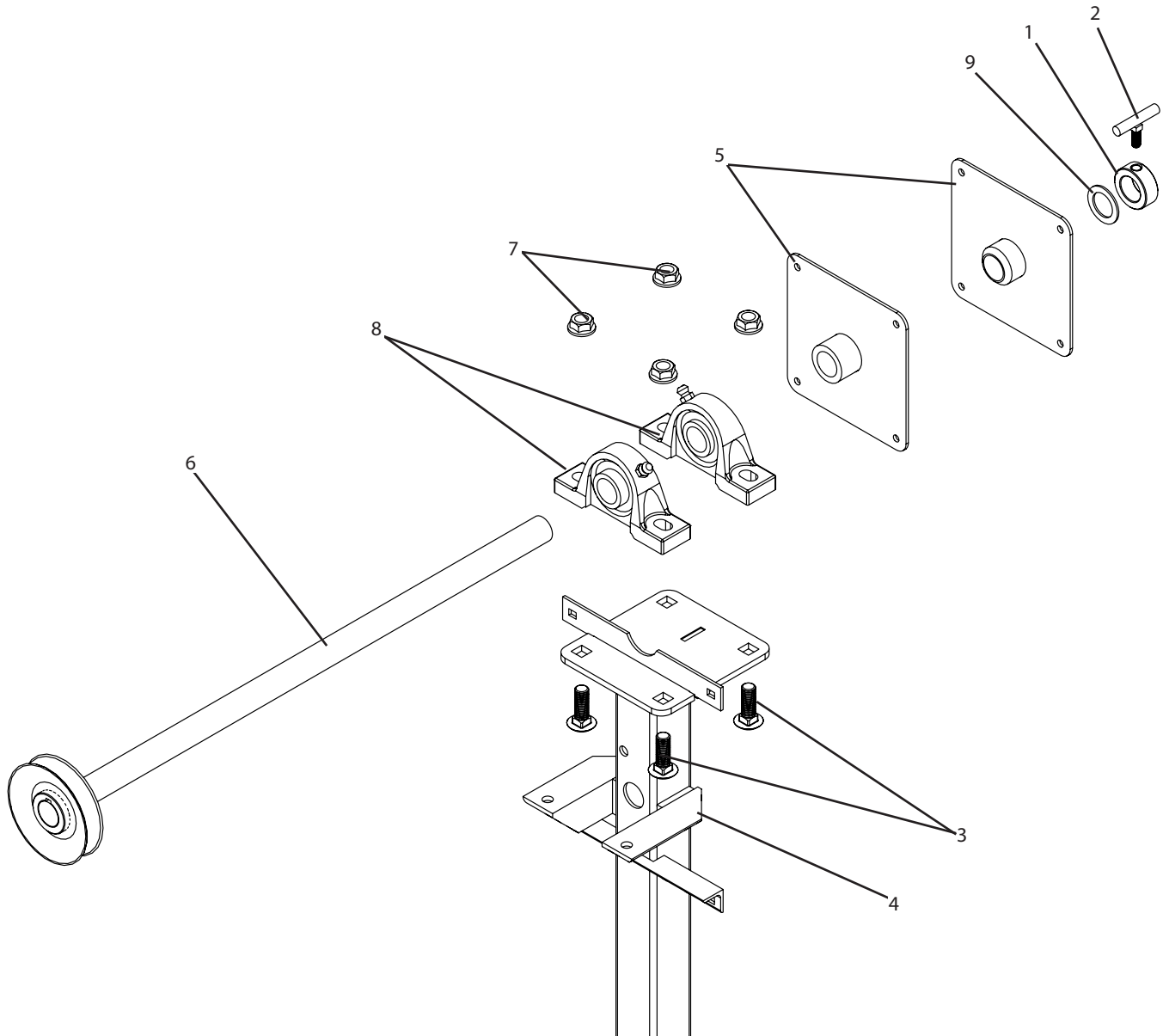
## Moving Roller Arm & Bearings



Ref #	Qty.	Part Number	Description
1	1	0750P	Shaft Collar, 3/4"
2	1	DTA104	Drip Tape Applicator, Moving Arm
3	1	DTA116	Drip Tape Applicator, Brake Lever
4	2	FN38	Nut, Flange 3/8-16
5	2	H5C38*312	Bolt, Hex 3/8-16 x 3-1/2" Gr 5
6	2	SBFT20412GKML	Bearing, 2 hole flange mounted, 3/4" ID, set screw locking
7	1	SHS516*34Z	Screw, Square Hd Set 5/16-18 x 3/4" Zinc

# DT4610 & DT4620 Parts Breakdown

## Drip Tape Reel Rotating Shaft & Post

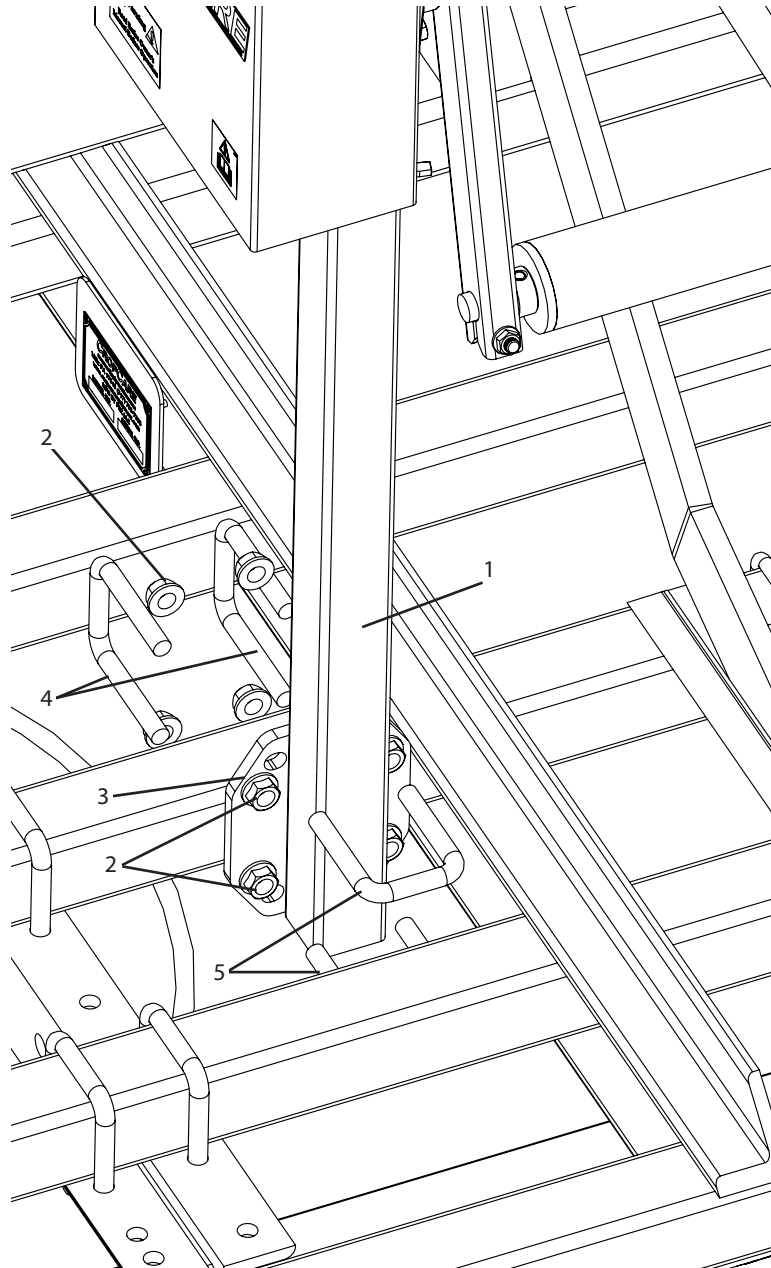


Ref #	Qty.	Part Number	Description
1	1	1000P	Shaft Collar, 1"
2	1	BF10S23	T-bolt, 5/16"
3	4	CB12*112G5	Bolt, Carriage 1/2-13 x 1-1/2" Gr 5
4	1	DTA102	Drip Tape Applicator, Post
5	2	DTA111	Drip Tape Applicator, Tape Holder End
6	1	DTA113	Drip Tape Applicator, Roll Rod and Brake Pulley
7	4	FN12	Nut, Flange 1/2-13
8	2	HCP205-16P	Bearing, Pillow Block, 1" Bore
9	1	MW1	Washer, Machine 1" x 1-1/2" x 14 Ga



# DT4610 & DT4620 Parts Breakdown

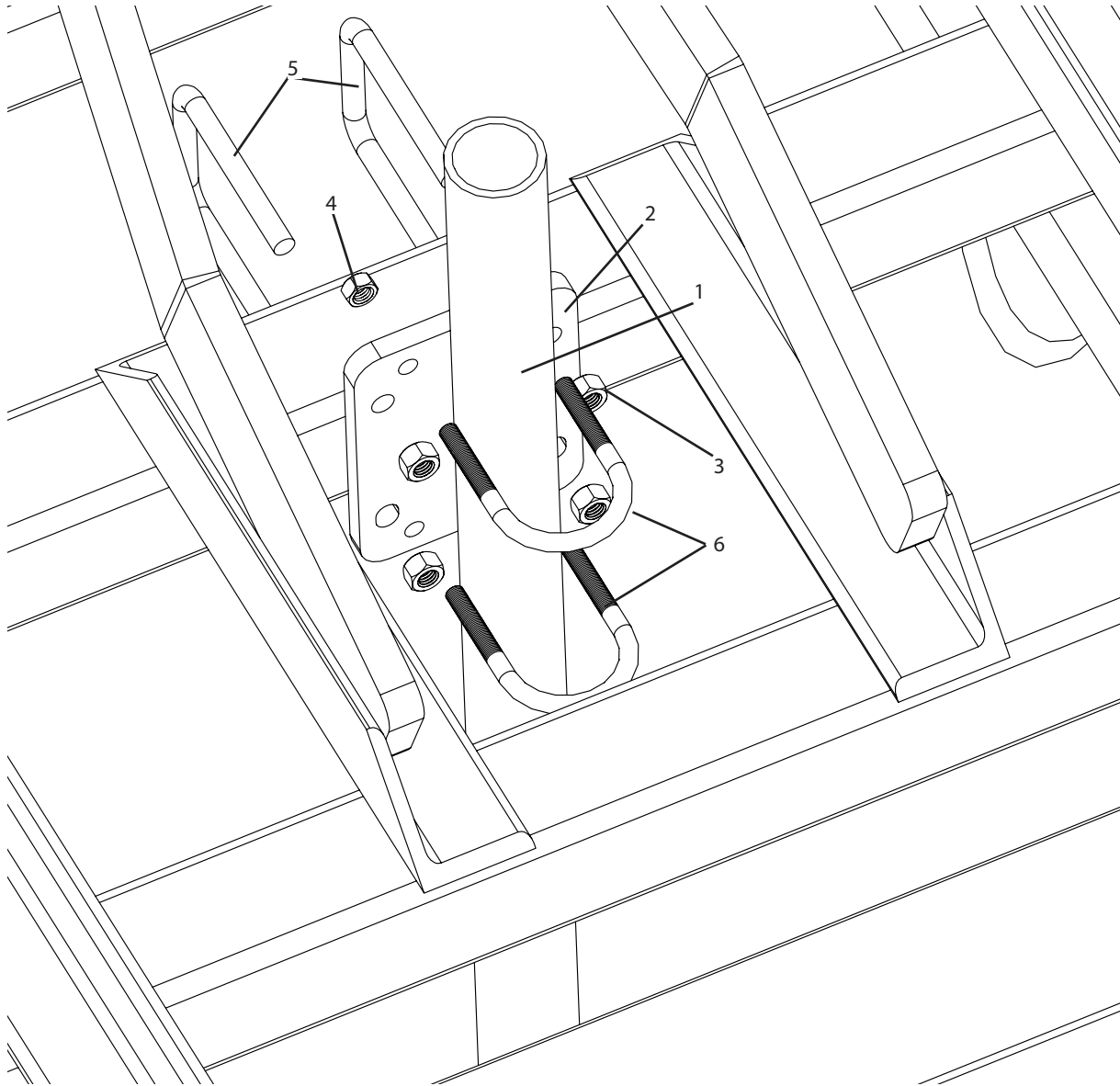
## Drip Tape Reel Post & Clamps



Ref#	Qty.	Part Number	Description
1	1	DTA102	Drip Tape Applicator, Post
2	8	FN12	Nut, Flange 1/2-13
3	1	RBL150	Plastic Layer, Toolbar Clamp Plate
4	2	UBSQ08X0208X0308	U-bolt, Square, 1/2-13 x 2 1/2" ID width x 3 1/2" ID length, zinc
5	2	UBSQ08X02X03	U-bolt, Square, 1/2-13 x 2" ID width x 3" ID length, zinc

# DT4610 & DT4620 Parts Breakdown

## Drip Tape Injector & Clamps



Ref#	Qty.	Part Number	Description
1	1	DTA110	Drip Tape Applicator, Injector, 5in depth
2	1	DTA101	Drip Tape Applicator, Shank Clamp
3	4	NC38	Nut, Hex 3/8-16
4	4	NC516	Nut, Hex 5/16-18
5	2	UBSQ06X0208X0308	U-bolt, Square, 3/8-16 x 2 1/2" ID width x 3 1/2" ID length, Zinc
6	2	N222141	Bolt, U-Bolt Round 5/16-18 x 1-3/8" x 2-1/2"