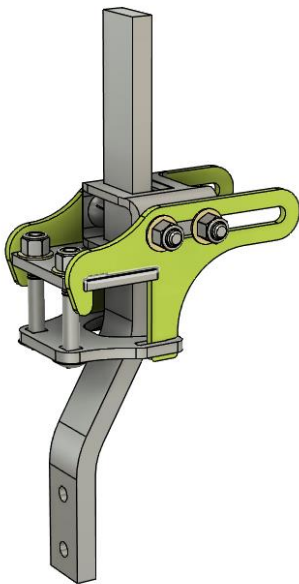




Parallel Clamp w/ Shank (PLL-CPS)

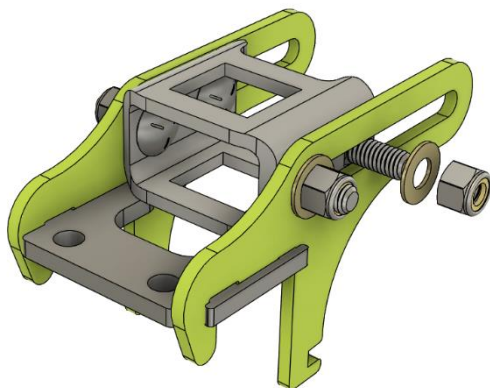
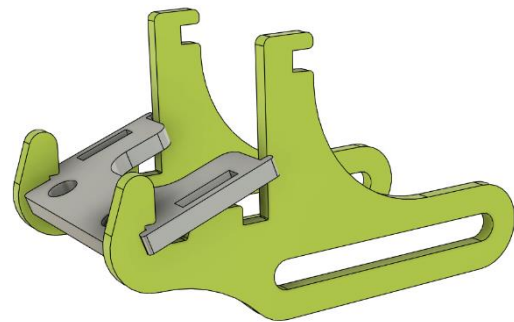
Assembly Instructions



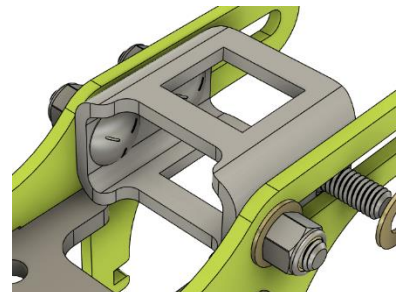
Required Tools:

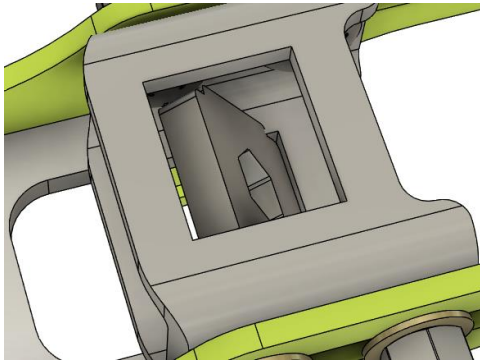
1x 9/16" wrench or ratchet with socket (recommended)

First connect the top zinc plated part to the two green size plates by inserting the zinc plated part as shown on an angle and pressing down along the back. It is a firm fit and may require being pressed or gently tapped down with a hammer.

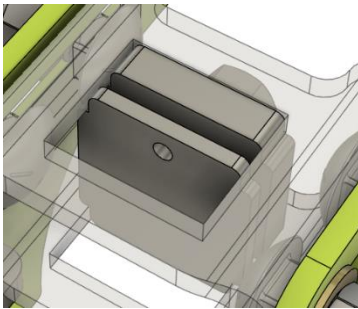
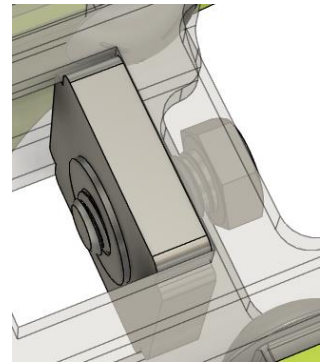


Next connect the clamp body to the green side plates using four of the 3/8x1" carriage bolts, washers and nylock nuts. Nuts and washers should be on the outside as shown. Clamp body can be installed as shown in either the left or right image, depending on how far the shank should sit from the modbar.



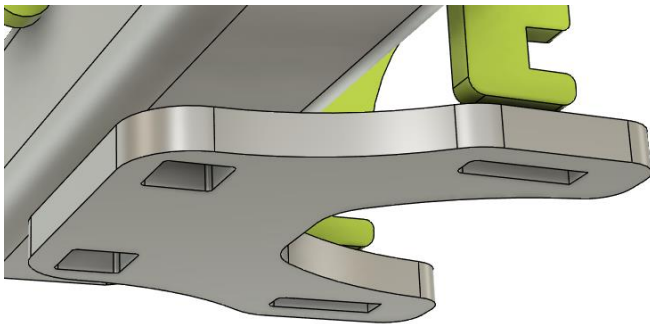


Then install the zinc plate with the hex opening by inserting it through the end of the clamp body and then tipping into place in the rectangular cut out as shown and standing it up. The flange nut and 3/8x3/4" hex bolt can also then be installed into the plate.



Install the smaller zinc plate with the small hole in next, tipping it into place in the same manner as the plate above.

These two plates can also be installed on either side of the clamp body to help position the shank to either end of the clamp depending on spacing required.



Rest the assembled clamp on the modbar and then slide the lower zinc plate up over the bottom of the green side plates and then pull it forward into the slot. You can then clamp it in place with the two 3/8x2-1/2" carriage bolts, washers and nylock nuts. The shank can then be installed into the clamp body and adjusted to the proper position for use.

