




# Flat Shank Clamp Assembly AA-9005



Release Date: 11/28/2018  
Document Number: 12.70004  
Revision Number: 00

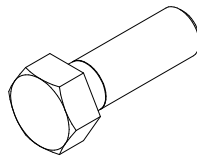
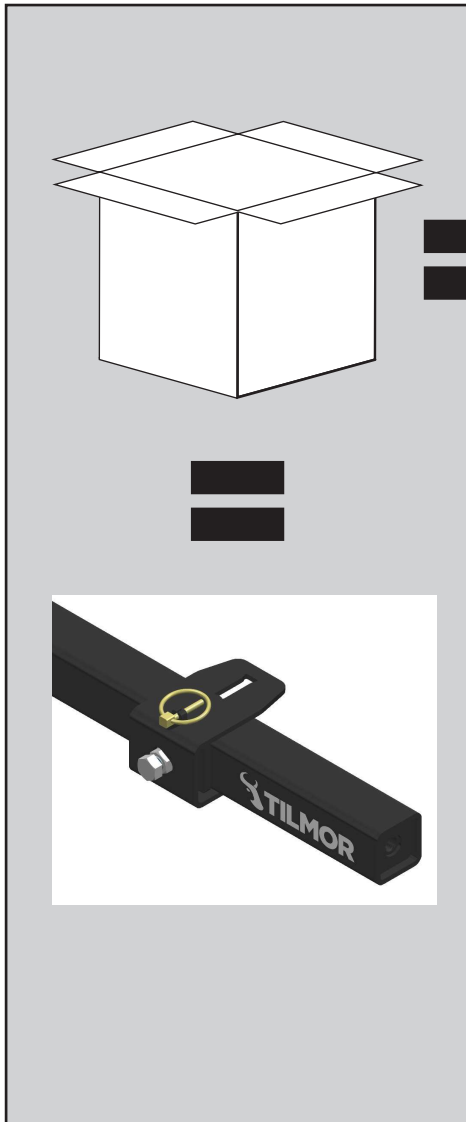
Go to [www.tilmor.com/resources](http://www.tilmor.com/resources) for complete parts list, additional resources and replacement part ordering.

**ATTENTION**  
Review safety information before operation.

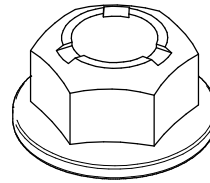
|  Tools |
|---|
| 3/4" wrench   |

**Installation Time (estimated)** 10 minutes

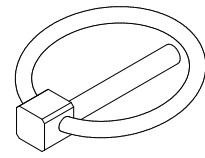
## REQUIRED PARTS



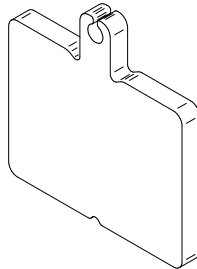
1x  
91.0808  
1/2" Hex Bolt



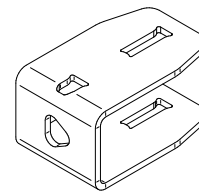
1x  
99.SF08NF  
1/2" Flange Nut



1x  
03.0021  
3/16" Lynch Pin

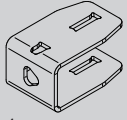


1x  
AA-1022  
Push Plate

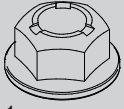


1x  
AA-3002  
Vertical Mount

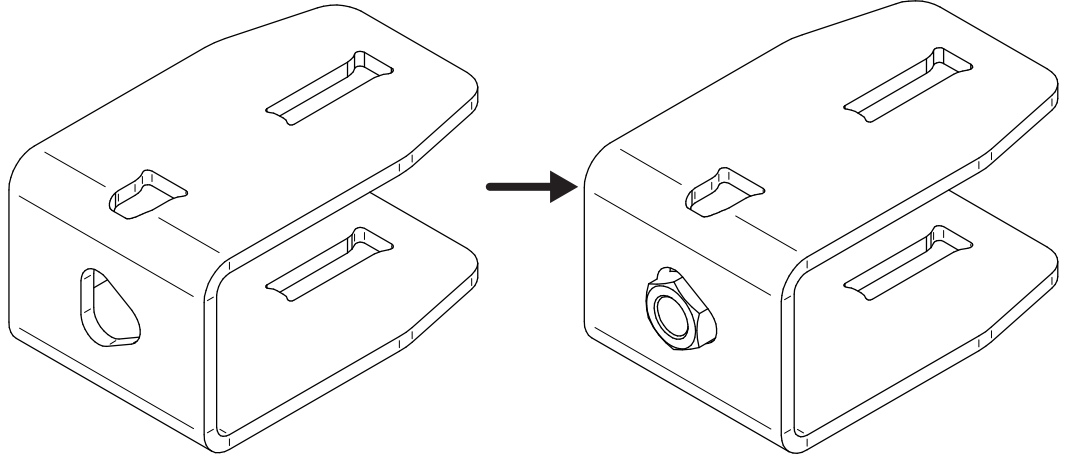
# ASSEMBLY



1x  
AA-3002  
Vertical  
Mount



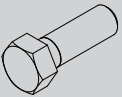
1x  
99.SF08NF  
1/2" Flange  
Nut



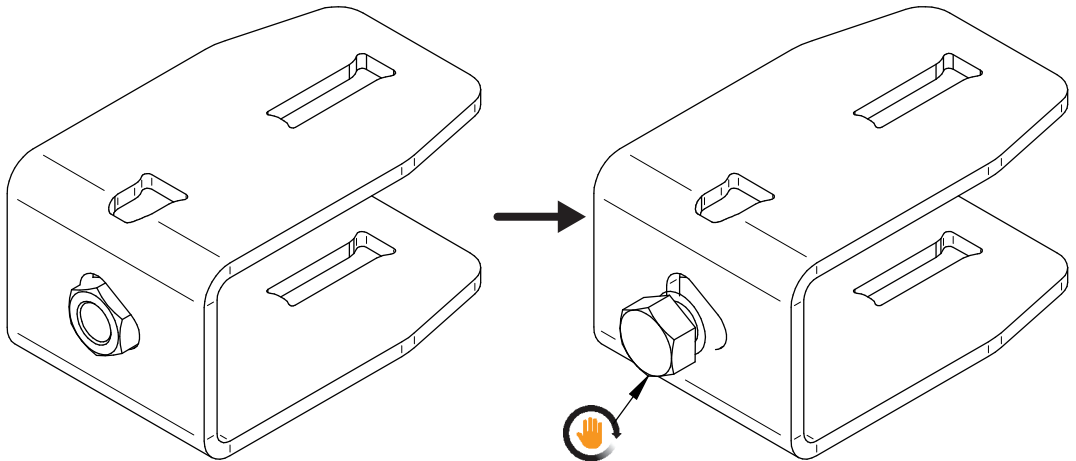
1



3/4" Wrench

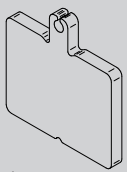


1x  
91.0808  
1/2" Hex  
Bolt

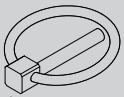


The 1/2" hex bolt should be installed hand tight. When a shank is installed through the bracket the 1/2" flange bolt should be torqued to 90 ft-lbs (122 Nm) against the push plate to hold the shank in place.

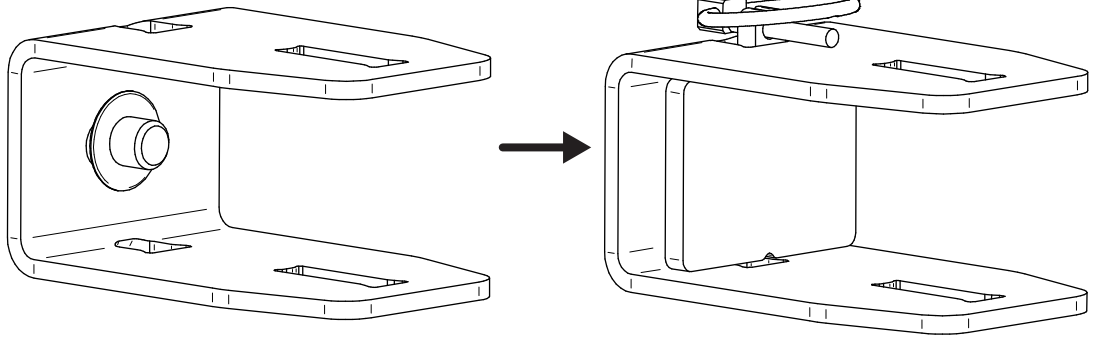
2



1x  
AA-1022  
Push Plate



1x  
03.0021  
3/16" Lynch  
Pin



3