



Torsion Weeder Mount Installation AA-9052

Go to www.tilmor.com/resources for complete parts list, additional resources and replacement part ordering.

Release Date: 02/07/2019
Document Number: 12.70001
Revision Number: 00



ATTENTION

Review safety information before operation.



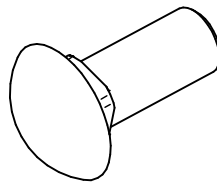
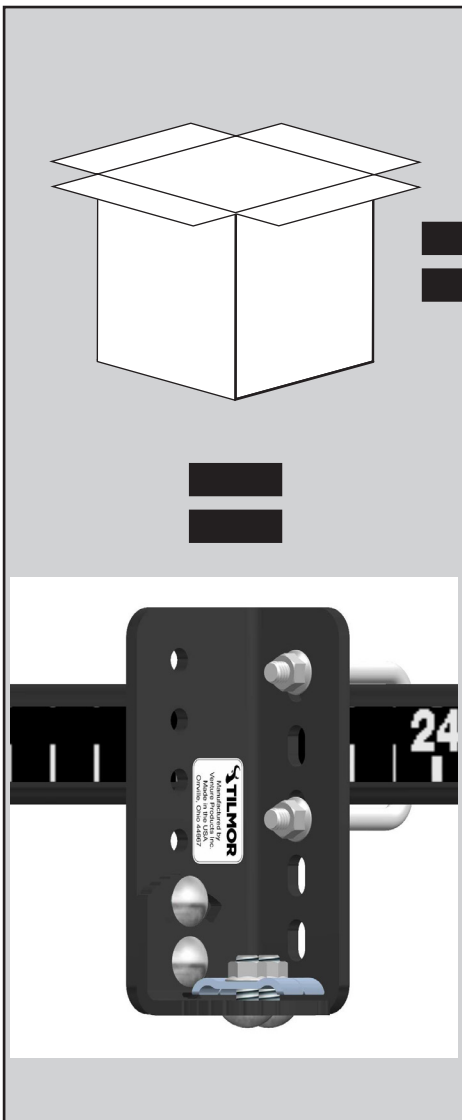
Tools

9/16" Wrench
9/16" Socket
Torque Wrench

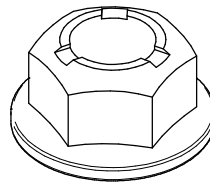
Installation Time (estimated)

30 minutes

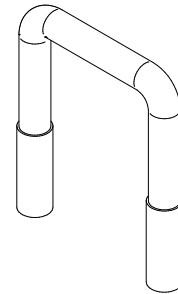
REQUIRED PARTS



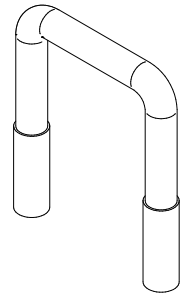
4x
97.0608
3/8" Carriage Bolt



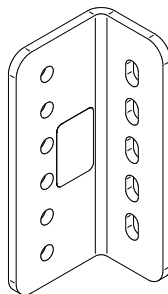
6x
99.SF06
3/8" Flange Nut



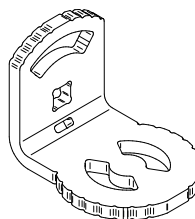
1x
11.0053
3/8" U-bolt 2-1/16"
ID



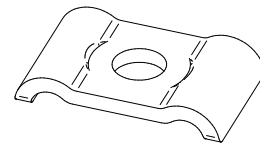
1x
11.0088
3/8" U-bolt 1-17/32"
ID



1x
AA-1131
Bracket, Torsion
Weeder



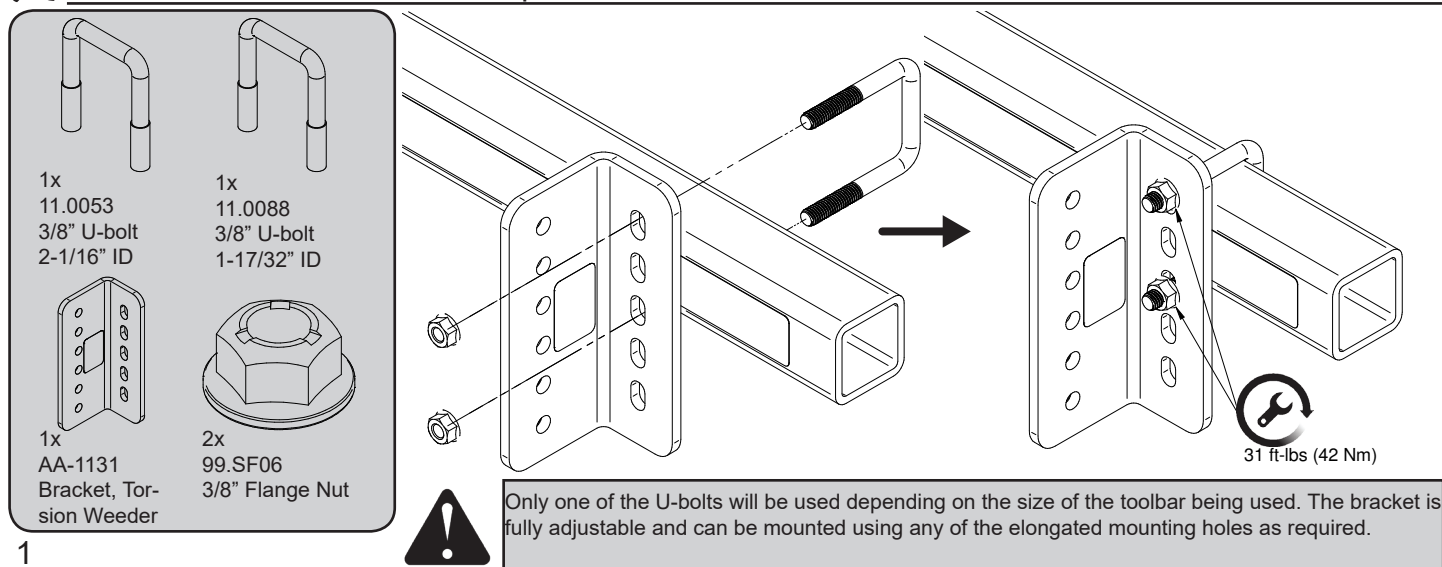
1x
AA-1132
Bracket, Tine Mount




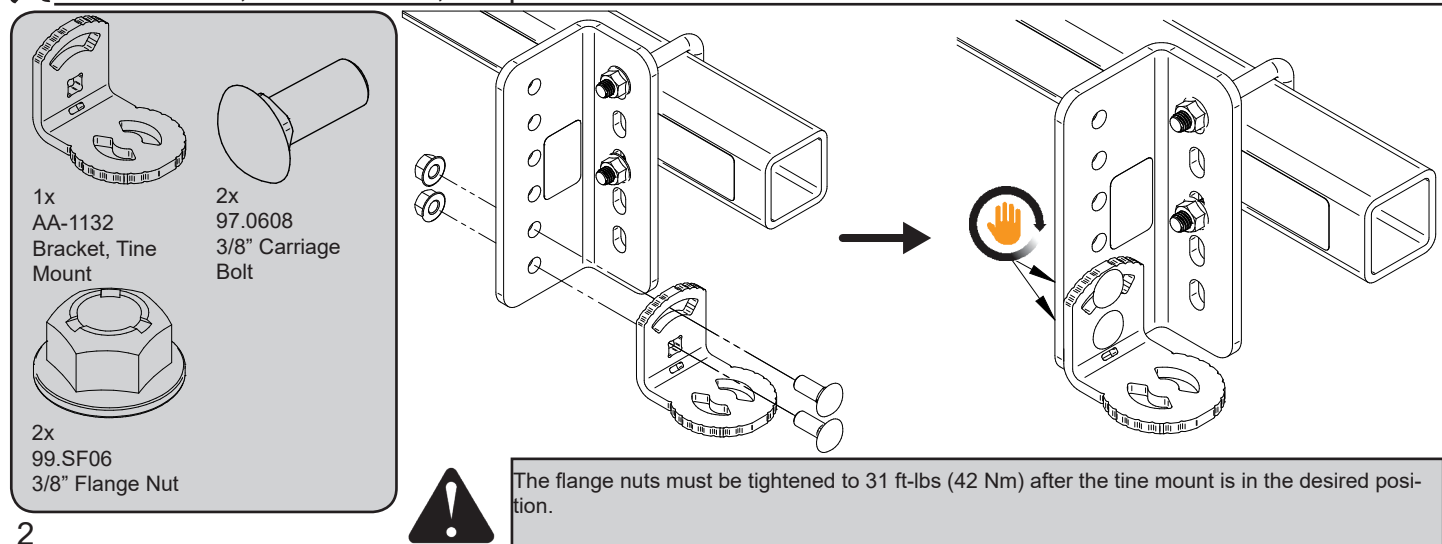
2x
AW-3042
Clamp, Spring Tine
Bottom


LEFT SIDE INSTALLATION

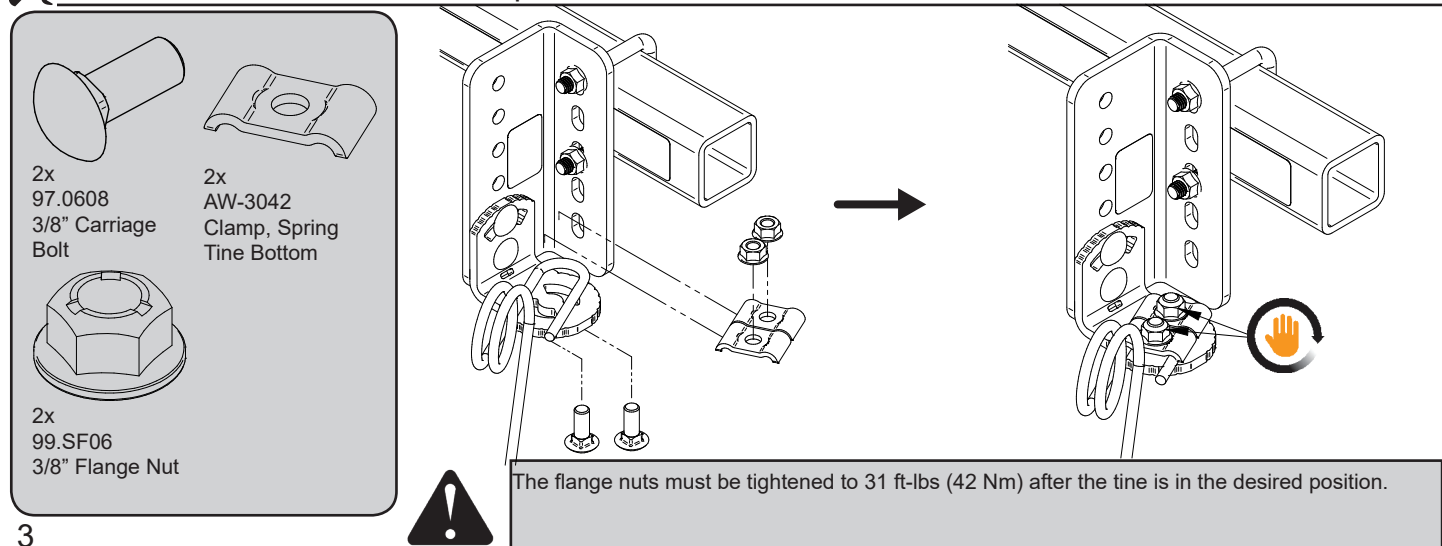
 9/16" wrench, 9/16" Socket, Torque Wrench



 9/16" wrench, 9/16" Socket, Torque Wrench

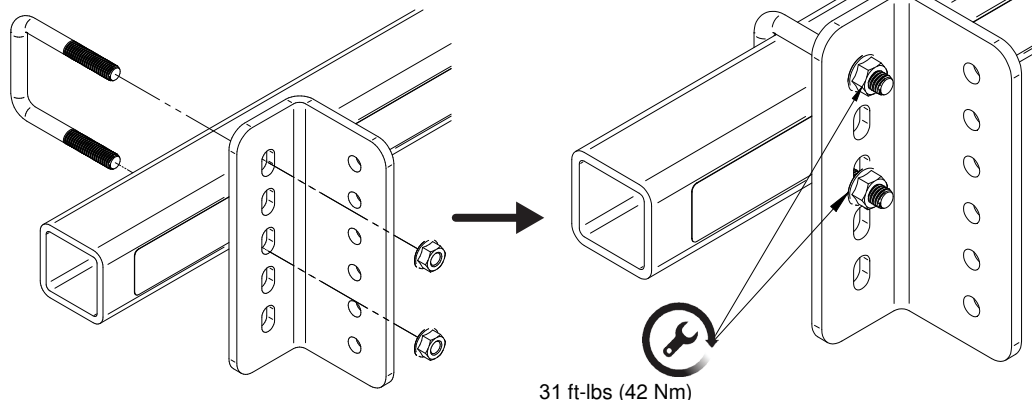
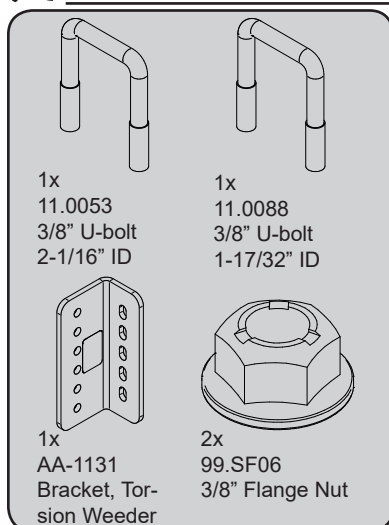



 9/16" wrench, 9/16" Socket, Torque Wrench




RIGHT SIDE INSTALLATION

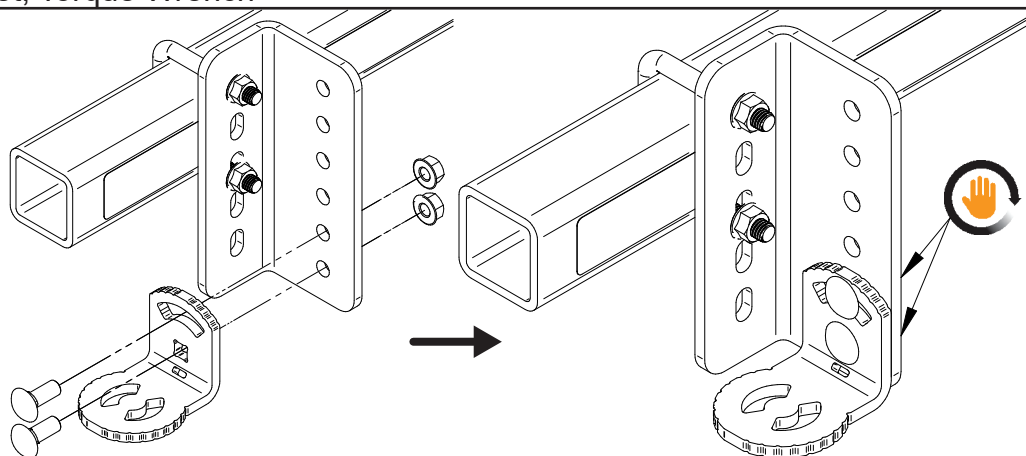
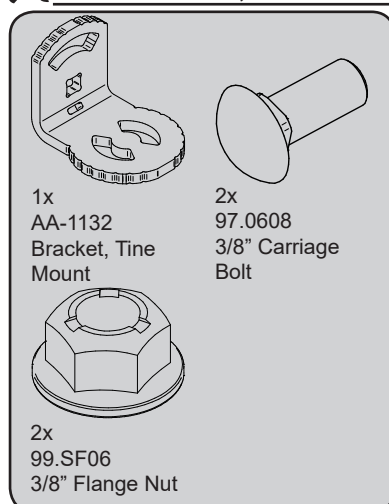
 9/16" wrench, 9/16" Socket, Torque Wrench




 Only one of the U-bolts will be used depending on the size of the toolbar being used. The bracket is fully adjustable and can be mounted using any of elongated mounting holes as required.


4

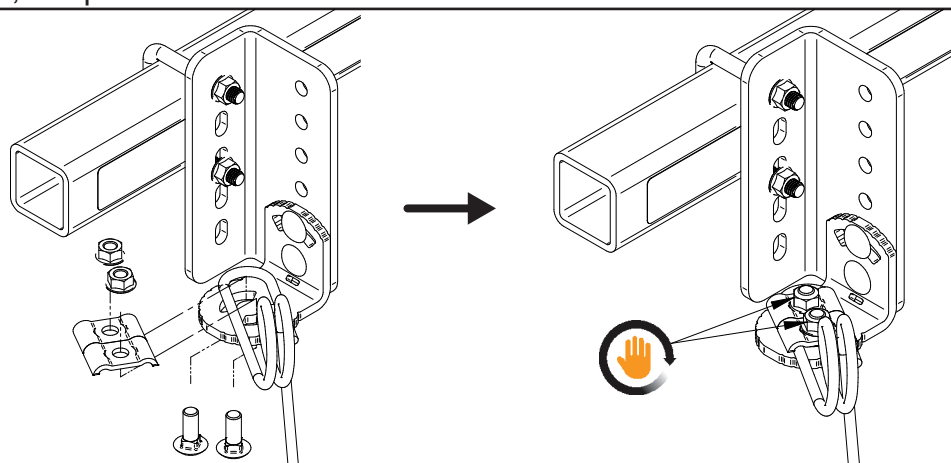
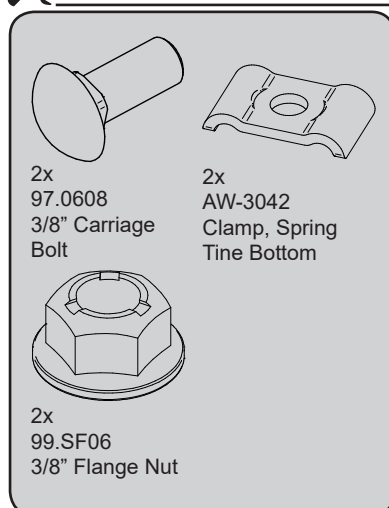
 9/16" wrench, 9/16" Socket, Torque Wrench




 The flange nuts must be tightened to 31 ft-lbs (42 Nm) after the tine mount is in the desired position.

5

 9/16" wrench, 9/16" Socket, Torque Wrench

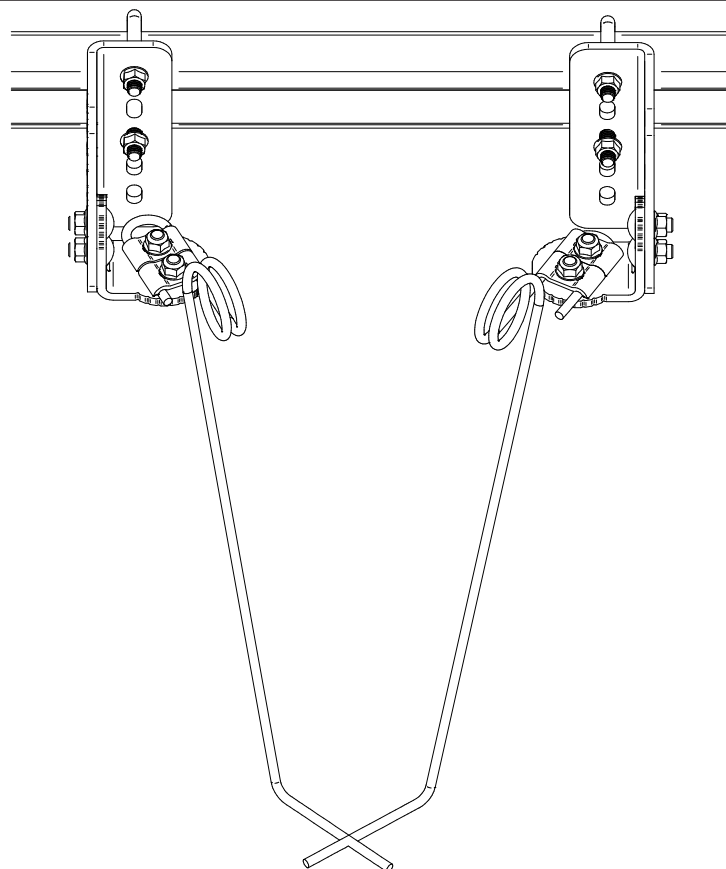


 The flange nuts must be tightened to 31 ft-lbs (42 Nm) after the tine is in the desired position.

6

TYPICAL INSTALLATION

Well-rooted plants with sturdy stems



Seedlings or emerging plants

