




Toolbar Mount Kit Kubota L245 AA-9040

Go to www.tilmor.com/resources for complete parts list, additional resources and replacement part ordering.

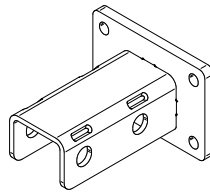
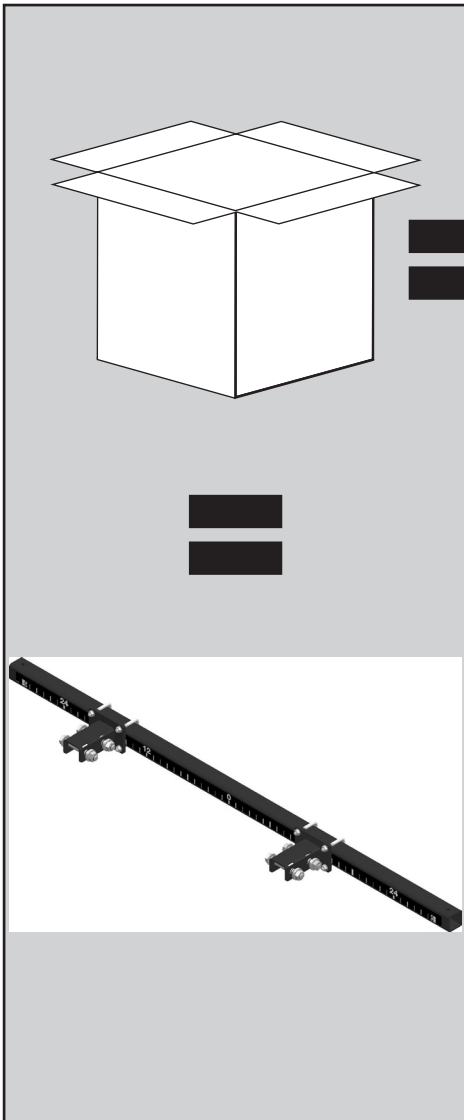
Release Date: 02/19/2019
Document Number: 12-70009
Revision Number: 00

ATTENTION
Review safety information before operation.

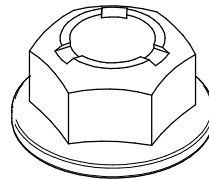
Tools	
	9/16" Wrench
	15/16" Wrench
	9/16" Socket
	15/16" Socket
	Ratchet
	Torque Wrench

Installation Time (estimated) 60 minutes

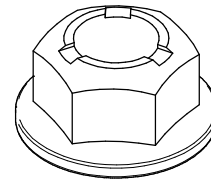
REQUIRED PARTS



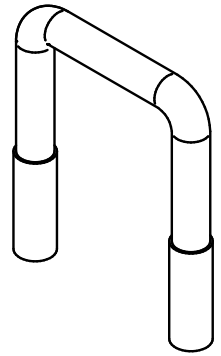
2x
AA-6030
Bracket, Toolbar
Mount Kubota



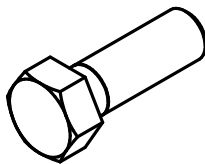
8x
99-E0082
3/8" Flange Nut



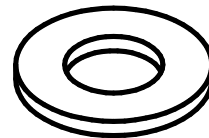
4x
99-E0094
5/8" Flange Nut



4x
11-0053
3/8" U-Bolt




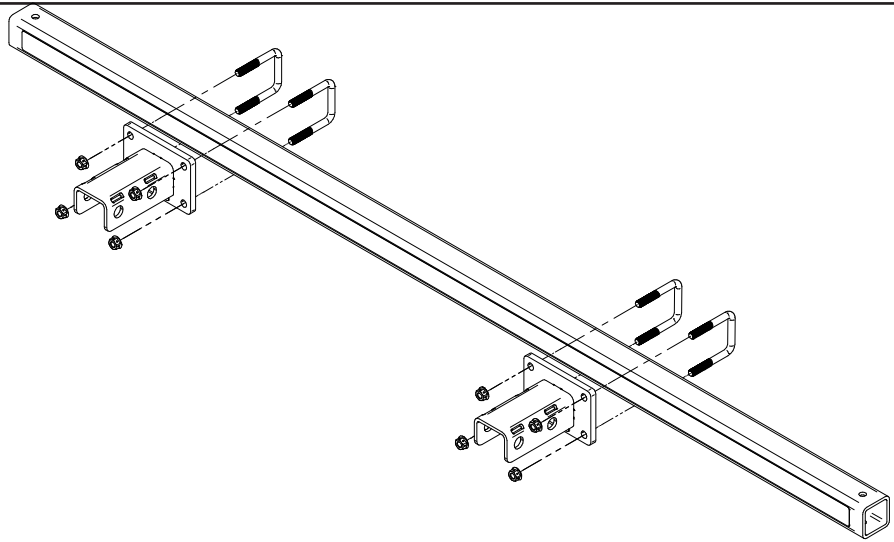
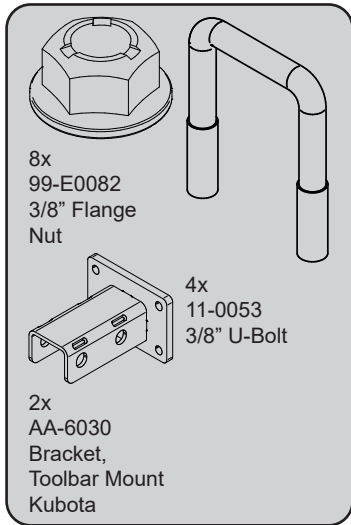
4x
90-1036
5/8" Bolt




8x
95-10
5/8" Flat Washer

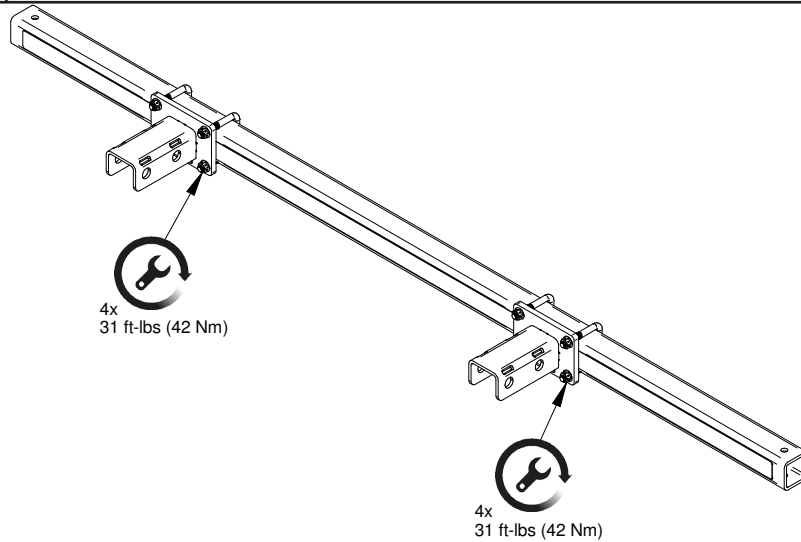
BRACKET INSTALLATION

 9/16" Wrench, 9/16" Socket, Ratchet



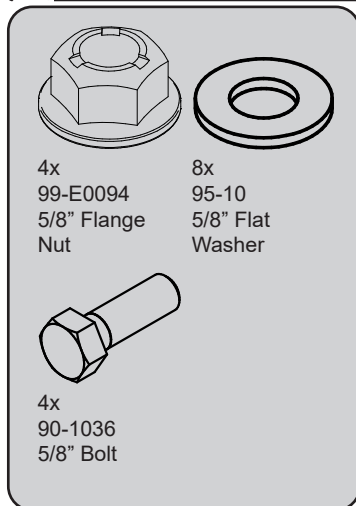
1

 9/16" Socket, Torque Wrench



2

 15/16" Wrench, 15/16" Socket, Ratchet, Torque Wrench



The additional hardware is to be used to mount the toolbar and brackets to the tractor. After the hardware is in place, torque the hardware to 151 ft-lbs (205 Nm).

3