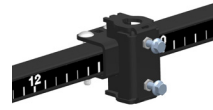




Round Shank Clamp Installation AA-9033



Release Date: 11/16/2018
Document Number: 12-70002
Revision Number:

Go to www.tilmor.com/resources for complete parts list, additional resources and replacement part ordering.



Tools

3/4" wrench
3/4" socket
Ratchet
Torque wrench



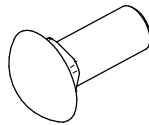
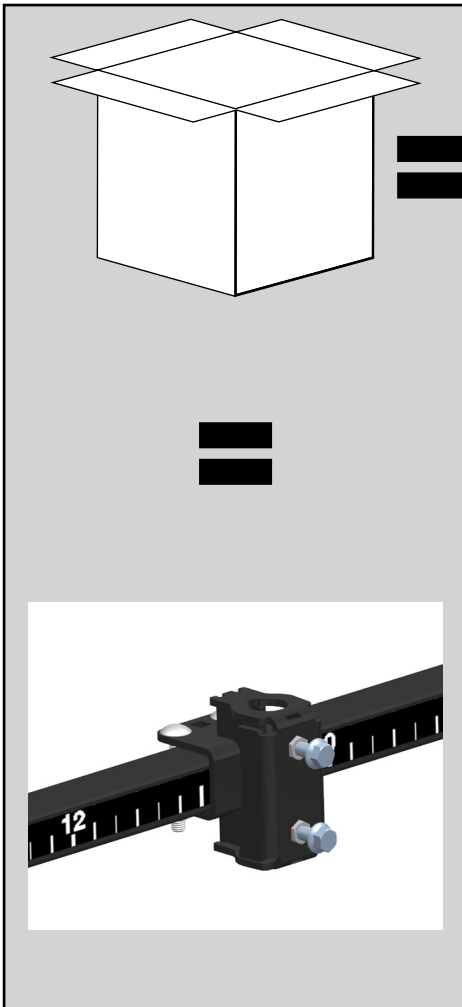
ATTENTION

Review safety information before operation.

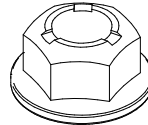
Installation Time (estimated)

10 minutes

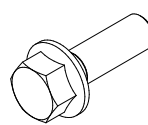
REQUIRED PARTS



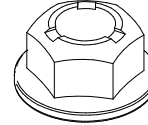
2x
97-0828
1/2" Carriage
Bolt



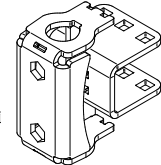
2x
99-E0103
1/2" Locking
Flange Nut



2x
91-0812
1/2" Flange
Bolt



2x
99-SF08NF-8
1/2" Flange
Nut




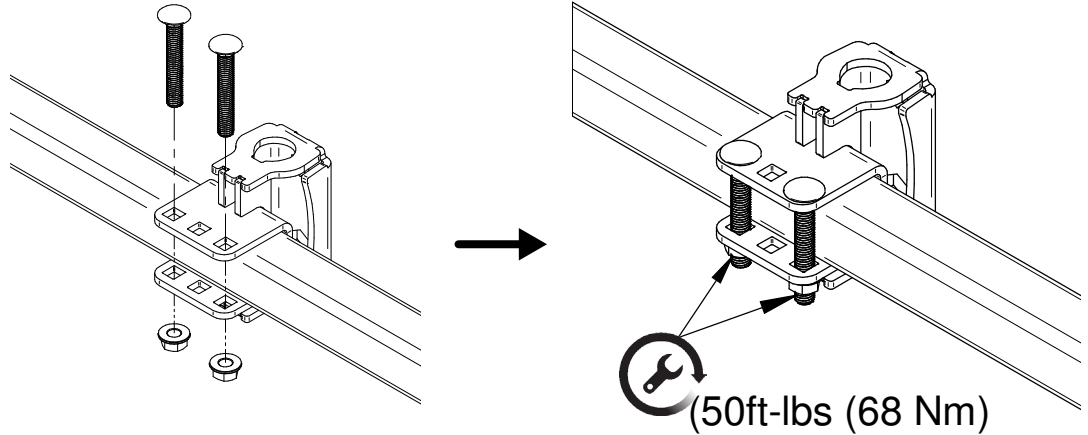
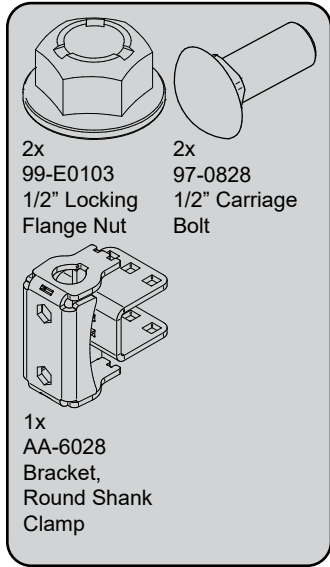
1x
AA-6028
Bracket,
Round Shank
Clamp



The flange nuts provided are the same size. However, one set of flange nuts has a fine thread while the other has a coarse thread. Ensure that the coarse thread flange nuts are used with the coarse thread carriage bolts. Failure to observe this caution can result in damage to the hardware.

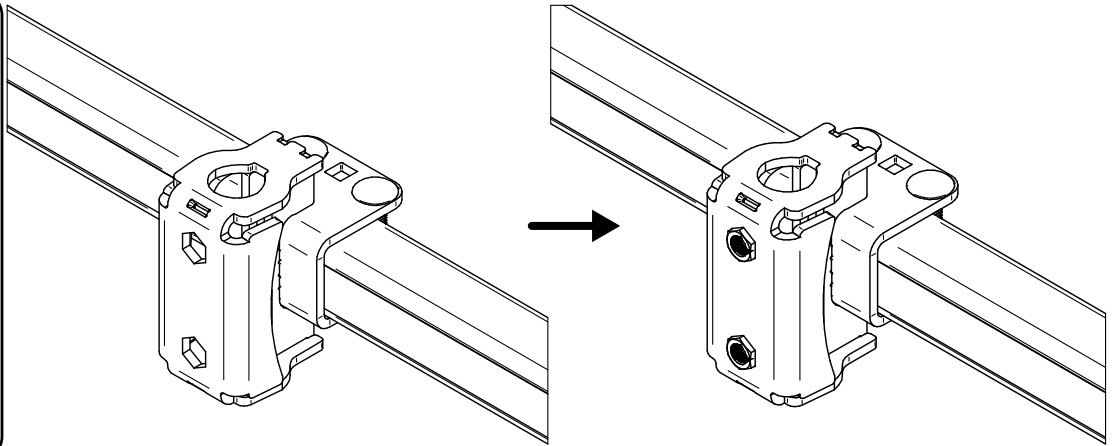
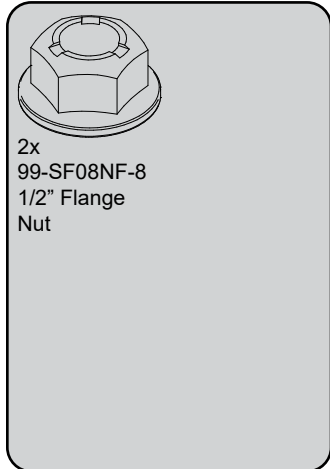
ROUND SHANK CLAMP INSTALLATION

 3/4" socket, Torque Wrench




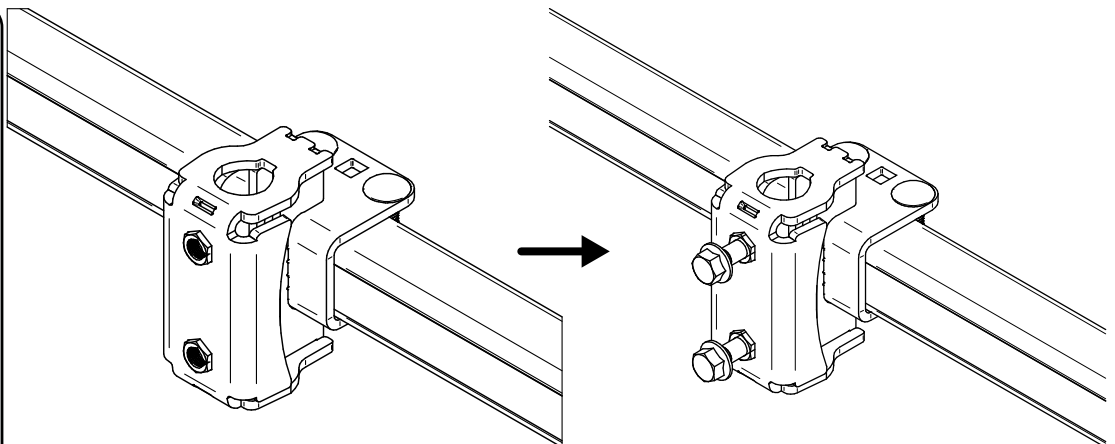
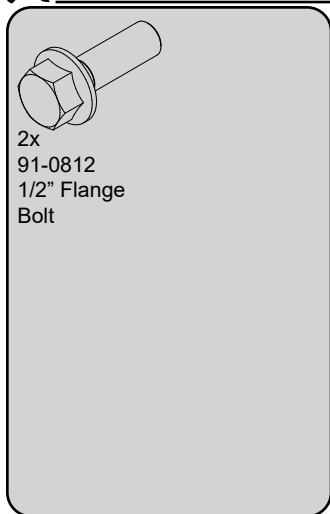
The flange nuts provided are the same size. However, one set of flange nuts has a fine thread while the other has a coarse thread. Ensure that the coarse thread flange nuts are used with the coarse thread carriage bolts. Failure to observe this caution can result in damage to the hardware.

1



2

 3/4" wrench



The 1/2" flange bolts should be installed hand tight. When a round shank is installed through the clamp the 1/2" flange bolts will be torqued to 90 ft-lbs (122 Nm).

3